

## POST OFFICE.

[Historical details of the development of the Post Office will be found in issues of the Handbook prior to 1898. Full information concerning the Post Office can be obtained from the "Post Office Guide" to be obtained at the Post Office, price 3d.]

THERE are 266 Post Offices in the island. Of these 61 are Telegraph, and 108 are Telephone Offices. All Telegraph and Telephone Offices are in communication with each other, and also with the Railway Telegraph system, which comprises 45 Telegraph Offices.

## RATES OF POSTAGE.

The following are the rates of postage, local and oversea.

LOCAL:—*Letters*—1d. for each oz. or fractional part of an oz.

*Post Cards*—Single,  $\frac{1}{2}$ d. Reply paid 1d.

*Printed and commercial papers*— $\frac{1}{2}$ d. for each 2 oz.

*Local (and British) newspapers and local magazines*— $\frac{1}{2}$ d. for each copy.

*Parcels*—(a) 1d. for each 2 oz.; (b) 4d. per lb.

A local packet of "Printed" or "Commercial" Papers may not exceed 3 pounds in weight, nor 2 feet in length, nor 1 foot in width or depth, except it be intended for transmission as a parcel.

The LOCAL rate of postage on "Printed" and on "Commercial" Papers is the same, viz., ( $\frac{1}{2}$ d. for each 2 oz.) but for OVERSEA mail the rate differs. See "Oversea" below.

*Parcels*.—Under scale (a) a parcel may not exceed 1 lb. in weight, 2 feet in length nor 1 foot in width or depth. (Under this scale the postage is 1d. for each 2 oz.)

Under scale (b) a parcel may not exceed 11 lbs. in weight nor 1,000 cubic inches in size, three feet in length and 1 foot in width or depth. (Under this scale the postage is 4d. per lb.)

*Registration fee*—2d. (See *Registration, (Inland)*)

*Advice of Delivery fee*—2d.

OVERSEA:—*Letters*— $1\frac{1}{2}$ d. for the first oz. and 1d. for each additional oz. for the British Empire; and  $2\frac{1}{2}$ d. for the first oz. and  $1\frac{1}{2}$ d. for each additional oz. for all other countries in the Postal Union.

*Letters for H. M. Ships of War and H. M. Troops serving abroad, irrespective of address* 1d. per oz.

*Post-Cards*—Single, 1d. each; Reply paid, 2d., each.

*Printed Papers*— $\frac{1}{2}$ d. per 2 oz.

*Commercial Papers*— $2\frac{1}{2}$ d. for first 10 oz. and  $\frac{1}{2}$ d. per 2 oz. thereafter.

*Samples*—1d. for first 4 oz. and  $\frac{1}{2}$ d. per 2 oz., thereafter.

"*Small Packets*"—6d. for first 8 oz. and  $1\frac{1}{2}$ d. per 2 oz. thereafter.

*Registration Fee*—2d. for all articles.

*Advice of Delivery Fee*—2d. (for registered articles only.)

*Insurance Fee (Letters only)*—5d. for every £12 of value in addition to the postage and registration fee.

*Limits of Size and Weight.*

*Letters*—Letters or articles paid at the letter rate of postage may not exceed 18 inches in any one direction except that when in form of a roll they may measure 30 inches in length by 4 inches in diameter. Letters to the British Empire may measure 2 ft. by 18 ins. *Limit of weight to all countries*—4 lbs. 6 oz.

*Post Cards*—Maximum size  $5\frac{7}{8}$  ins. by  $4\frac{1}{8}$  ins.

*Printed and Commercial Papers*—Limits of size for packages of printed and commercial papers is the same as for letters.

The maximum weight of packages of printed papers is 5 lbs. for the British Empire and 4 lbs. 6 ozs. for other countries. *Single volumes of printed books sent separately to any destination may, however, weigh as much as 6 lbs. 9 ozs.*

*Samples and "Small Packets."*—Packets of samples and "Small Packets" for foreign countries must not exceed 18 inches in length, 8 in width and 4 in depth, unless in form of a roll, for which the limits are 18 inches in length and 6 inches in diameter. Packets of samples addressed to the British Empire may measure 2 feet in length and 1 foot in width or depth.

Limit of weight for Samples is 5 lbs. for British Empire and 1 lb. 2 oz. for other countries; and limit for "Small Packets" is 2 lbs. 2 oz. for all countries.

"*Blind Literature*"—Packets containing papers impressed for the use of the blind sent



to any place abroad are accepted up to a maximum weight of 6 lbs. 9 ozs. The prepaid rate of postage on such packets is:—

Up to 2 lbs. 3 oz. =  $\frac{1}{2}$ d.; up to 4 lbs. 6 oz. = 1d.; up to 6 lbs. 9 oz. =  $1\frac{1}{2}$ d

In all other respects the regulations as regards printed papers apply.

#### REGISTRATION (Inland.) \*

Any letter or other mail matter may be registered on pre-payment of the registration fee and postage. Packets containing money or jewellery, *must be registered* and must be prepaid at the *letter rate of postage*. Any packet found to contain money or jewellery† but not registered, will be liable to a surcharge equal to double the registration fee.

#### I.—FEES.

The fees payable over and above the postage, and the respective limits of compensation, are as follows:—

Fee .. 2d., 3d., 4d., 5d., 6d., 7d., 8d., 9d., 10d., 11d., 1s.

Limit of compensation £2, £10, £20, £30, £40, £50, £60, £70, £80, £90, £100.

These fees *include* the ordinary registration fee 2d. The highest amount of compensation obtainable for any one packet is £100.

#### OFFICIAL CORRESPONDENCE.

##### A

List of Officials and other Public Functionaries who send and receive correspondence through the inland post free of charge:

Attorney General	Government Electrical Inspector
Auditor General	Government Meteorologist
Centl. Brd. of Health, Chairman and Secy.	Government Savings Bank, Manager of
Chief Commissioner, Contagious Disease	Governor, His Excellency the
of Animals Law	Governor's Private Secretary and A.D.C.
Chief Inspector of Agricultural Produce	Health Officers
Chief Justice	Inspector of Income Tax
Clerk of Legislative Council	Inspector General of Police
Collector General	Inspectors of Police
Collectors of Customs	Inspectors and Assistant Inspectors of
Collectors of Taxes and Assistants	Schools.
Colonial Secretary and Assistant	International Health Board, Director for
Crown Solicitor	Jamaica
Custodes of Parishes	Judge of the Kingston Court
Dir. of Agriculture and Island Chemist (1)	Keeper of the Records ( <i>Not</i> Deputy
Director of Education	Keeper: See List B.)
Director of Public Works	Land Board: Secretary of
Director of Railway	Mayor of Kingston
District Medical Officers	Naval Agent
Executive Engineers and Inspectors,	Officer Commanding Troops
P. W. D.	Postmaster for Jamaica

\* Conditions governing registration of *inland* correspondence differ from those governing *overseas* correspondence.

† For definition of *money* and *jewellery* see P.O. Guide.

(1) Letters for the technical officers of the Department of Agriculture, viz. Deputy Island Chemist, Microbiologist, Entomologist, Veterinary Surgeon, Headmaster Farm School, Superintendent Experimental Station and Inspector of Plant Diseases, addressed "care of the Director of Agriculture," are delivered free.



Puisne Judges	Senior and Junior Sanitary Medical Officers
Quarantine Board, Chairman and Secretary	Senior Medical Officer, Public Hospital, Kingston
Registrar General	Staff Officer of the Local Forces
Resident Magistrates	Stamp Commissioner and Deputy Stamp Commissioner
Secretary of Assessment Committee, Income Tax	Superintendent of the Lunatic Asylum
Secretary of Central Board of Health	Superintendents of Public Works
Secretary, Housing and Land Settlement Committee	Superintending Medical Officer
Secretary of Land Board and Agricultural Loan Board	Surveyor General
Secretary, Local War Graves Committee	Transport Board, Chairman and Secretary
Secretary, Quarantine Board	Treasurer

## B.

The following may send but not receive official correspondence free of charge:—

Administrator General	Registrar of the Supreme Court
Advisory Board, Rio Cobre Irrigation (letters must bear signature of Secretary, Mr. F. E. Taylor)	Registrar of Titles
Canadian Trade Commissioner	Secretary of Board of Directors, Shortwood Training College
Clerks of Courts	Secretary of Board of Education
Clerk, Victoria Jubilee Hospital	Secretary of Board of Supervision
Comptroller of Jamaica Civil Service	Secretary of Central Supplementary Allowances Committee
Widows' and Orphans' Pensions	Secretary of Institute of Jamaica (2)
Deputy Keeper of Records	Secretary of Jamaica Agricultural Society (3)
Director of Prisons	Secretary of Kingston Athenæum (2)
Director of Public Health Bureau	Secretary of Marine Board
Elected Members, Legislative Council (1)	Secretary of Mico Training College
Harbour Master	Secretary of Public Tenders Committee
Headmaster Cornwall College, Montego Bay	Secretary of Schools Commission
Headmaster Kingston Technical and Continuation School	Secretary of Sugar Industry Aid Board
H. M.'s Trade Commissioner	Secretary Tourist Trade Development Board
Inmates of the Lepers' Home	Secretary of Vere Irrigation
Inspector Hookworm Campaign	Shortwood College : Principal and Secretary of Board of Directors
Mico Training College, Principal and Secretary	Superintendent of General Penitentiary
Nominated Members, Legislative Council (1)	Superintendent of Govt. Printing Office
Officer in charge of Coleyville Wireless Station	Superintendent of Industrial School
Officer Commanding Jamaica Militia Artillery	Superintendent of Machinery, P.W. Dept.
Passport and Permit Officer	Superintendent of Public Gardens
Principal of Mico Training College	Superintendent of St. Catherine District Prison
Principal of Shortwood Training College	Superintendent of Stores, P.W. Department
Protector of Immigrants	Superintending Inspector, Hookworm Campaign

(1) Elected and nominated members of the Legislative Council have the privilege of franking letters relating to public business which they may write in their official capacity as members of the Council and sending them through the post free of charge, their *signatures* and official designation to be placed on the envelope.

(2) Franked labels are sent out with each packet of books to enable them to be returned through the post free of charge.

(3) The Secretary of the Agricultural Society may issue franked envelopes or coverings addressed to himself.



*Special Regulations.*

The following are permitted to pass through the Post Office free of postage:—

1. Printed notices ("consignee's undelivered goods"), posted in open official envelopes by railway station agents, and bearing the stamp "Jamaica Government Railway" or "Jamaica Railway Company."
2. Letters headed "Infectious Diseases Notification," bearing the signature of the medical practitioner and addressed to a Medical Officer of Health or the Central Board of Health, or a Local Board of Health.
3. Packets addressed to Mrs. Bourne, Medical Office, Kingston.
4. Parcels containing artificial limbs sent by ex service men of the B.W.I.R. addressed to the military authorities at Up-Park Camp or to the Technical School, Hanover Street, Kingston.
5. Reading matter for the blind printed in Braille or similar script, posted by the Territorial Commander of the Salvation Army, on the following conditions:—
  - (a) The cover of each such packet to bear the signature and designation of the Territorial Commander.
  - (b) To be endorsed "Literature for the Blind."
  - (c) Each packet of such literature to be returned to Kingston to bear a label addressed "The Territorial Commander, Salvation Army, Kingston," duly signed and endorsed as above.

*Letters addressed to places abroad cannot be franked but should be prepaid.*

*Rules regarding Franking of Official Correspondence.*

1. The envelope or cover of the official letter or other packet may be "franked" under authority of His Excellency the Governor in either of the following ways—(a) By the impression of an approved official frank stamp; (b) by the signature and official designation of the Head of the Department, or other duly authorised officer or functionary on the lower left hand corner of the envelope or cover. The envelope or cover must be superscribed with the words "On His Majesty's Service."
2. The envelope or cover must be addressed to the head of the department or to a public officer or functionary who is entitled by the authority of His Excellency the Governor to receive official correspondence free of charge for postage.
3. No public officer will be permitted to make use of any stamp for franking letters or to frank letters without the authority of the Governor.
4. Heads of Departments and all postmasters must exercise vigilance to prevent any abuse of the franking privilege, and any evasion or attempt to abuse the privilege and any departure from the rules, must be reported, with full particulars, to the Colonial Secretary or to the Postmaster for Jamaica.
5. The franking of envelopes, etc., either by means of the franking stamp or by signature, is strictly forbidden, unless the envelopes contain at the time of franking the official correspondence or matter to be transmitted through the post, subject to the following exception, namely:—

That any written or printed matter properly issued in a franked envelope or covering for circulation among members of a board or any body of individuals, and for ultimate return to the office of issue, may be passed from one member of such board or body to another in an envelope or covering provided for the purpose and duly franked in advance by a duly authorised officer.

*N B.*—All registered letters, posted by the public and not franked as above described, addressed to the officials named above in both lists A and B, must be prepaid with the registration fee of two pence, with the exception of registered letters addressed to the Manager of the Government Savings Bank and Collectors and Assistant Collectors of Taxes which are wholly postage free.

## POSTAGE STAMPS, POST CARDS, ENVELOPES, WRAPPERS, ETC.

*Postage Stamps* of the following denominations are sold:—

½d., 1d., 1½d., 2d., 2½d., 3d., 4d., 6d., 9d., 1s., 2s., 3s., 5s., 10s.

Books containing twelve 1d. stamps and six ½d. and six 1½d. stamps are issued, price 2s.

*Inland post cards* are sold at ½d. each, Reply-paid at 1d.; *International Post Cards* at 1d., Reply-paid, 2d.

*Registered letter envelopes* (linen-lined) bearing a 3d. stamp embossed on the flap for the payment of registration fee 2d. and postage 1d., are of two sizes and are sold at 3½d. and 4d. each.

*Judicial Stamps* of the values 3d., 6d., 1/, 2/, 5/ and 8/6 are sold at all Post Offices where there is a demand for them.



*Impressed Stamps.* title deeds and blank slips are on sale at all Post Offices.

*Quinine* is also sold at all Post Offices in  $\frac{1}{4}$ d. and 1d. packages.

The following is a description, together with the dates of issue, of all postage stamps in circulation:—

Denomination	Description.	Date of issue.
$\frac{1}{2}$ d.	King George V.	Nov. 3, 1927
1d.	King George V.	Mar. 15, 1929
$1\frac{1}{2}$ d.	King George V.	Jan. 18, 1929
2d.	King's House, Spanish Town	Feb. 18, 1921
$2\frac{1}{2}$ d.	Return of a Contingent	Do.
3d.	"Jamaica discovered by Columbus, 1494"	April 8, 1921
4d.	The Cathedral, Spanish Town	Jan. 21, 1921
6d.	View of Port Royal Harbour, 1853	Dec. 5, 1922
9d.	King George V.	Mar. 5, 1929
1/	"Queen Victoria of Jamaica, Lady Supreme"	Dec. 10, 1920
2/	The Rodney Memorial	Do.
5/	"Isle of Wood and Water"	April 15, 1921
10/	"George V., of Jamaica, Supreme Lord"	May 6, 1920

All postage stamps of the colony are now being printed on the Multiple Crown Script (C.A.) water-mark paper.

#### MONEY ORDERS.

Money Orders are issued at the Head Office, Kingston, and at the Post Offices of the capital of each parish. Applications for money orders addressed to the Postmaster for Jamaica or to a Postmaster are free of postage. (The registration fee of 2d. must, however, be prepaid.)

The commission on money orders drawn on the United Kingdom, United States, Canal Zone, Canada, and any other country except those named in the following sentence is sixpence for the first £ and threepence for each additional £ or fractional part. The commission on Money Orders drawn on Trinidad, Barbados, British Guiana, Windward and Leeward Islands, Turks Island, Cayman Islands, Bermuda, Bahamas, and British Honduras, is sixpence for first £2 and two pence for each additional £ or fractional part.

#### TELEGRAPH MONEY ORDERS.

The system of Telegraph Money Orders is in operation between the United Kingdom and Jamaica. The remitter of a Telegraph Money Order is required to pay, in addition to the M.O. commission, the cost of the Telegram of Advice at the ordinary rate ( $\frac{2}{4}$ ) or at the "deferred" rate ( $\frac{1}{2}$ ) per word. Every word in the telegram has to be paid for; in the case of a "deferred" telegram, the instruction "L.C.O." is charged as one word, and the word "Postmaster" has also to be sent in every case and must be paid for. Further details may be had from the Chief M.O. Office, Kingston.

#### POSTAL ORDERS.

*Amounts of poundage.*—Postal Orders are sold and cashed at all Post Offices in Jamaica, and in the countries marked with an asterisk (\*) on page 47 Post Office Guide. These orders are printed on a paper bearing an "all-over" watermark consisting of the Royal Cipher—a crown and the letters G. v R., and they measure slightly less than 7 in. in length.

The commissions charged on orders issued are as follows:—

At 6d., 1s., 1s. 6d., 2s., 2s. 6d.	1d.	At 7s. 6d.	..	..	2d.
At 3s., 3s. 6d., 4s. 6d., 5s.	$1\frac{1}{2}$ d.	At 8s., 10s.	..	..	$2\frac{1}{2}$ d.
At 20s.	..	..	..	..	$4\frac{1}{2}$ d.

*Postage Stamps Affixed to Postal Orders.*—The sender of a postal order, whether made payable in the United Kingdom or elsewhere (excepting Canada), may increase its value by an amount not exceeding 5d. by affixing postage stamps not exceeding two in number to the face of the order. No credit will be given for stamps which are in excess of three or which are affixed elsewhere than in the spaces provided. Odd half pence will not be paid. Stamps perforated with initials or marks, or embossed or impressed stamps cut out of envelopes, post cards, &c., cannot be accepted for this purpose.

#### REPLY COUPONS.

International Reply Coupons are sold at the Money Order Office, Kingston at 4d. each, and Imperial Reply Coupons at  $2\frac{1}{2}$ d. each. The former represent the postage on a single-rate letter mailed in any country of the Postal Union, and the latter the postage on a single-rate letter mailed in any country of the British Empire. Coupons are cashed at the rate of  $2\frac{1}{2}$ d. for a 50-centime, and  $1\frac{1}{2}$ d. for an Imperial coupon.



## INLAND MAILS.

## DAYS AND HOURS OF POSTING AND ARRIVAL.

*Explanation of Marks of Reference.*

- a.*—Closing time for newspapers, books, registered letters, parcels—9.15 a.m.  
*b.*—Closing time for newspapers, books—12.15 p.m.; registered letters and parcels—12.30 p.m.  
*c.*—Closing time for newspapers, books—2.15 p.m.; registered letters—2.30 p.m.; parcels—3 p.m.  
*d.*—Closing time for newspapers, books, registered letters, parcels—10 a.m.  
*t.*—Telegraph Offices. *tel.*—Telephone Offices. *Ry.t.*—Railway Telegraph Offices.

All Offices transact parcel post business, but parcels addressed to those offices marked "l" are occasionally subject to delay.  
 Registered letters for offices for which the mail closes at 6.30 a.m. must be posted not later than 4 p.m. on the previous day.  
 Offices printed in SMALL CAPITALS are branches of the Government Savings Bank.

Office.	Parish.	Miles from Kingston	Post at Kingston.		Arrive at D.P.O. from Kingston.		Leave D.P.O. for Kingston.		Arrive at Kingston.	
			Mon., Wed. and Fri.	Tues., Thurs. and Sat.	Mon., Wed. & Fri.	Tues., Thr. & Sat.	Mon., Wed. & Fri.	Tues., Thr. & Sat.	Mon., Wed. & Fri.	Tues., Thu. & Sat.
Above Rocks, l.	St. Catherine	18	10.30 a.m. d.	10.30 a.m. d	4.15 p.m.	4.15 p.m.	7.30 a.m.	7.30 a.m.	12.45 p.m.	12.45 p.m.
ADELPHI, tel. l.	St. James	120	1.00 p.m. b	1.00 p.m. b	11.20 a.m.	11.20 a.m.	2.50 p.m.	2.50 p.m.	9.15 a.m.	9.15 a.m.
Albany, Ry. t.	St. Mary	42	1.00 p.m. b	1.00 p.m. b	4.50 p.m.	4.50 p.m.	8.30 a.m.	8.30 a.m.	11.40 a.m.	11.40 a.m.
Albert Town, tel. l.	Trelawny	103	9.30 a.m. a	9.30 a.m. a	5.00 p.m.	5.00 p.m.	8.00 a.m.	8.00 p.m.	3.20 p.m.	3.20 p.m.
Alderton, l.	St. Ann	51	1.00 p.m. b	1.00 p.m. b	7.20 a.m.	7.20 a.m.	4.30 p.m.	4.30 p.m.	9.15 a.m.	9.15 a.m.
ALEXANDRIA, l.	do	76	9.30 a.m. a	9.30 a.m. a	5.50 p.m.	5.50 p.m.	7.25 a.m.	7.25 a.m.	3.20 p.m.	3.20 p.m.
			1.00 p.m. b	1.00 p.m. b	7.20 a.m.	7.20 a.m.	5.55 p.m.	5.55 p.m.	9.15 a.m.	9.15 a.m.
ALLEY, tel. l.	Clarendon	47	6.30 a.m.	6.30 a.m.	10.45 a.m.	10.45 a.m.	5.25 a.m.	5.25 a.m.	9.15 a.m.	9.15 a.m.
Alligator Pond, tel. l.	Manchester	79	9.30 a.m. a	9.30 a.m. a	6.50 p.m.	6.50 p.m.	6.00 a.m.	6.00 a.m.	3.20 p.m.	3.30 p.m.
Alston, tel. l.	Clarendon	68	9.30 a.m. a	9.30 a.m. a	4.13 p.m.	4.13 p.m.	5.20 p.m.	5.20 p.m.	9.15 a.m.	9.15 a.m.
Anchovy, tel.	St. James	105½	9.30 a.m. a	9.30 a.m. a	5.35 p.m.	5.35 p.m.	7.30 a.m.	7.30 a.m.	3.20 p.m.	3.20 p.m.
ANNOTTO BAY, t.	St. Mary	50	1.00 p.m. b	1.00 p.m. b	5.35 p.m.	5.35 p.m.	7.30 a.m.	7.30 a.m.	11.40 a.m.	11.40 a.m.
Askenish, l	Hanover	144	1.00 p.m. b	1.00 p.m. b	1.05 p.m.	1.05 p.m.	5.00 p.m.	5.00 p.m.	3.20 p.m.	3.20 p.m.
BALACLAVA, t	St. Elizabeth	71	9.30 a.m. a	9.30 a.m. a	3.05 p.m.	3.05 p.m.	10.20 a.m.	10.20 a.m.	3.20 p.m.	3.20 p.m.
Balcarres, l. tel.	Portland	45	1.00 p.m. b	1.00 p.m. b	10.35 a.m.	10.35 a.m.	2.45 p.m.	2.45 p.m.	11.40 a.m.	11.40 a.m.
Bamboo, tel.	St. Ann	59	1.00 p.m. b	1.00 p.m. b	7.10 a.m.	7.10 a.m.	3.50 p.m.	3.50 p.m.	9.15 a.m.	9.15 a.m.
Banana Ground, l.	Manchester	57½	3.15 p.m. c	3.15 p.m. c	11.30 a.m.	11.30 a.m.	1.55 p.m.	1.55 p.m.	9.15 a.m.	9.15 a.m.
Bartons, l.	St. Catherine	30	9.30 a.m. a	9.30 a.m. a	3.20 p.m.	3.20 p.m.	8.00 a.m.	8.00 a.m.	3.20 p.m.	3.20 p.m.
Bath, tel.	St. Thomas	41	1.00 p.m. b	1.00 p.m. b	6.10 p.m.	6.10 p.m.	4.15 a.m.	4.15 a.m.	8.15 a.m.	8.15 a.m.
Beckford Kraal, tel. l.	Clarendon	51	6.30 a.m. a	6.30 a.m. a	1.30 p.m.	1.30 p.m.	4.30 p.m.	4.30 p.m.	9.15 a.m.	9.15 a.m.
Beeston Spring, l.	Westmoreland	116	9.30 a.m. a	3.15 p.m. c	11.10 a.m.	11.10 a.m.	12.50 p.m.	12.50 p.m.	3.20 p.m.	9.15 a.m.
Belfield, tel. l.	St. Mary	42½	1.00 p.m. b	1.00 p.m. b	6.20 p.m.	6.20 p.m.	5.50 a.m.	5.50 a.m.	11.40 a.m.	11.40 a.m.



BELLAS GATE, l.	St. Catherine	34	9.30 a.m. a	9.30 a.m. a	4.00 p.m.	4.00 p.m.	7.00 a.m.	7.00 a.m.	3.20 p.m.	3.20 p.m.
Bensonton, l.	St. Ann	58	1.00 p.m. b	1.00 p.m. b	9.35 a.m.	9.35 a.m.	2.05 p.m.	2.05 p.m.	9.15 a.m.	9.15 a.m.
BETHEL TOWN, tel. l.	Westmoreland	110	9.30 a.m. a	9.30 a.m. a.	7.50 p.m.	7.50 p.m.	5.25 a.m.	5.25 a.m.	3.25 p.m.	3.20 p.m.
BLACK RIVER, t.	St. Elizabeth	98	9.30 a.m. a	9.30 a.m. a	5.55 p.m.	5.55 p.m.	7.00 a.m.	7.00 a.m.	3.20 p.m.	3.20 p.m.
		104	—	3.15 p.m. c	12.10 a.m.	—	4.50 p.m.	—	—	9.15 a.m.
Blackstonedg, l.	St. Ann	40	1.00 p.m. b	1.00 p.m. b	5.35 p.m.	5.35 p.m.	8.05 a.m.	8.05 a.m.	11.40 a.m.	11.40 a.m.
Bluefields, tel.	Westmoreland	118	9.30 a.m. a	3.15 p.m. c	8.00 a.m.	8.20 a.m.	2.55 p.m.	3.00 p.m.	3.20 p.m.	9.15 a.m.
Bog Walk, t.	St. Catherine	20½	6.30 a.m.	6.30 a.m.	9.00 a.m.	9.00 a.m.	10.00 a.m.	10.00 a.m.	11.40 a.m.	11.40 a.m.
			1.00 p.m. b	1.00 p.m. b	3.30 p.m.	3.30 p.m.	4.30 p.m.	4.30 p.m.	6.15 p.m.	6.15 p.m.
Bonny Gate, l.	St. Mary	55	1.00 p.m. b	1.00 p.m. b	8.30 a.m.	8.30 a.m.	3.00 p.m.	3.00 p.m.	11.40 a.m.	11.40 a.m.
BOROUGHBRIDGE, t. l.	St. Ann	69	9.30 a.m. a	9.30 a.m. a	4.30 p.m.	4.30 p.m.	8.45 a.m.	8.45 a.m.	3.20 p.m.	3.20 p.m.
Bowden, tel. l.	St. Thomas	42	1.00 p.m. b	1.00 p.m. b	7.30 a.m.	7.30 a.m.	4.00 p.m.	4.00 p.m.	8.15 a.m.	8.15 a.m.
Braes River	St. Elizabeth	77	9.30 a.m. a	9.30 a.m. a	4.10 p.m.	4.10 p.m.	8.50 a.m.	8.50 a.m.	3.20 p.m.	3.20 p.m.
Brainerd, tel. l.	St. Mary	35½	1.00 p.m. b	1.00 p.m. b	6.00 p.m.	6.00 p.m.	7.30 a.m.	7.30 a.m.	11.40 a.m.	11.40 a.m.
Brighton, l.	St. Elizabeth	106	9.30 a.m. a	9.30 a.m. a	7.00 a.m.	7.00 a.m.	3.00 p.m.	3.00 p.m.	3.20 p.m.	3.20 p.m.
Brown's Hall, tel. l.	St. Catherine	34	9.30 a.m. a	9.30 a.m. a	4.25 p.m.	4.25 p.m.	6.30 a.m.	6.30 a.m.	3.20 p.m.	3.20 p.m.
BROWN'S TOWN, t.	St. Ann	67	9.30 a.m. a	9.30 a.m. a	6.40 p.m.	6.40 p.m.	6.35 a.m.	6.35 a.m.	3.20 p.m.	3.20 p.m.
			1.00 p.m. b	1.00 p.m. b	11.25 p.m.	11.25 p.m.	12.05 a.m.	12.05 a.m.	9.15 a.m.	9.15 a.m.
BUFF BAY, t.	Portland	40	1.00 p.m. b	1.00 p.m. b	6.00 p.m.	6.00 p.m.	7.30 a.m.	7.30 a.m.	11.40 a.m.	11.40 a.m.
Bull Bay, tel.	St. Andrew	10	1.00 p.m. b	1.00 p.m. b	2.55 p.m.	2.55 p.m.	7.35 a.m.	7.35 a.m.	8.15 a.m.	8.15 a.m.
Bushy Park, Ry. t.	St. Catherine	20	6.30 a.m.	6.30 a.m.	8.45 a.m.	8.45 a.m.	7.25 a.m.	7.25 a.m.	9.15 a.m.	9.15 a.m.
			3.15 p.m. c	3.15 p.m. e	5.20 p.m.	5.20 p.m.	4.20 p.m.	4.20 p.m.	6.15 p.m.	6.15 p.m.
Calderwood, l.	St. Ann	81	1.00 p.m. b	1.00 p.m. b	9.10 a.m.	9.10 a.m.	4.10 p.m.	4.10 p.m.	9.15 a.m.	9.15 a.m.
CAMBRIDGE, tel.	St. James	98	9.30 a.m. a	9.30 a.m. a	4.55 p.m.	4.55 p.m.	8.00 a.m.	8.00 a.m.	3.20 p.m.	3.20 p.m.
CARRON HALL, tel. l.	St. Mary	41	1.00 p.m. b	1.00 p.m. b	6.40 p.m.	6.40 p.m.	7.00 a.m.	7.00 a.m.	11.40 a.m.	11.40 a.m.
Cascade, l.	Hanover	148	1.00 p.m. b	1.00 p.m. b	1.45 p.m.	1.45 p.m.	5.00 p.m.	5.00 p.m.	3.20 p.m.	3.20 p.m.
Castleton, tel. l.	St. Mary	19	10.30 a.m. a	10.30 a.m. a	4.35 p.m.	4.35 p.m.	7.15 a.m.	7.15 a.m.	12.45 p.m.	12.45 p.m.
CATADUPA, Ry. t.	St. James	94	9.30 a.m. a	9.30 a.m. a	4.35 p.m.	4.35 p.m.	8.45 a.m.	8.45 a.m.	3.20 p.m.	3.20 p.m.
Cavaliers, l.	St. Andrew	13	10.30 a.m. d	10.30 a.m. d	2.35 p.m.	2.35 p.m.	9.15 a.m.	9.15 a.m.	12.45 p.m.	12.45 p.m.
Cave	Westmoreland	132	9.30 a.m. a	3.15 p.m. a	8.05 p.m.	7.20 a.m.	2.30 p.m.	4.05 p.m.	3.20 p.m.	9.15 a.m.
Cave Valley, tel.	St. Ann	94	9.30 a.m. a	9.30 a.m. a	5.05 p.m.	5.05 p.m.	8.10 a.m.	8.10 a.m.	3.20 p.m.	3.20 p.m.
			1.00 p.m. b	1.00 p.m. b	8.00 a.m.	8.00 a.m.	5.15 p.m.	5.15 p.m.	9.15 a.m.	9.15 a.m.
Cedar Valley, tel. l.	St. Thomas	23	3.15 p.m. c	3.15 p.m. c	10.36 a.m.	10.36 a.m.	3.00 p.m.	3.00 p.m.	8.50 a.m.	8.50 a.m.
Cessnock	Hanover	157½	1.00 p.m. b	1.00 p.m. b	1.20 p.m.	1.20 p.m.	4.10 p.m.	4.10 p.m.	3.20 p.m.	3.20 p.m.
CHAPELTON, t.	Clarendon	45	6.30 a.m.	6.30 a.m.	10.22 a.m.	10.22 a.m.	5.50 a.m.	5.50 a.m.	9.15 a.m.	9.15 a.m.
			3.15 p.m. c	3.15 p.m. c	7.07 p.m.	7.07 p.m.	2.40 p.m.	2.40 p.m.	3.20 p.m.	3.20 p.m.
Chalky Hill, l.	St. Ann	62	1.00 p.m. b	1.00 p.m. b	6.40 a.m.	6.40 a.m.	5.00 p.m.	5.00 p.m.	9.15 a.m.	9.15 a.m.
Chester Castle, l.	Hanover	107	9.30 a.m. a	9.30 a.m. a	6.45 p.m.	6.45 p.m.	6.30 a.m.	6.30 a.m.	3.20 p.m.	3.20 p.m.
CHRISTIANA, t.	Manchester	64	9.30 a.m. a	9.30 a.m. a	3.19 p.m.	3.19 p.m.	9.56 a.m.	9.56 a.m.	3.20 p.m.	3.20 p.m.



Office.	Parish.	Miles from Kingston	Post at Kingston.		Arrive at D.P.O. from Kingston.		Leave D.P.O. for Kingston.		Arrive at Kingston.	
			Mon., Wed. and Fri.	Tues., Thurs. and Sat.	Mon., Wed. and Fri.	Tues., Thurs. and Sat.	Mon., Wed. and Fri.	Tues., Thurs. and Sat.	Mon., Wed. and Fri.	Tues., Thurs. and Sat.
CLAREMONT, <i>l.</i>	St. Ann	47	1.00 p.m. <i>b</i>	1.00 p.m. <i>b</i>	5.50 p.m.	5.50 p.m.	3.40 a.m.	3.40 a.m.	9.15 a.m.	9.15 a.m.
Clark's Town, <i>tel.</i>	Trelawny	86	1.00 p.m. <i>b</i>	1.00 p.m. <i>b</i>	1.25 a.m.	1.25 a.m.	10.05 p.m.	10.05 p.m.	9.15 a.m.	9.15 a.m.
Clonmel, <i>l.</i>	St. Mary	42	1.00 p.m. <i>b</i>	1.00 p.m. <i>b</i>	6.15 p.m.	6.15 p.m.	6.45 a.m.	6.45 a.m.	11.40 a.m.	11.40 a.m.
Coleyville, <i>l. tel.</i>	Manchester	67	9.30 a.m. <i>a</i>	9.30 a.m. <i>a</i>	4.35 p.m.	4.35 p.m.	8.45 a.m.	8.45 a.m.	3.20 p.m.	3.20 p.m.
Colonel's Ridge, <i>l.</i>	Clarendon	53 <sup>1/2</sup>	6.30 a.m.	6.30 a.m.	2.20 p.m.	2.20 p.m.	3.50 p.m.	3.50 p.m.	9.15 a.m.	9.15 a.m.
Comfort Hall, <i>l.</i>	Manchester	75	9.30 a.m. <i>a</i>	9.30 a.m. <i>a</i>	1.40 p.m.	4.40 p.m.	8.30 a.m.	8.30 a.m.	3.20 p.m.	3.20 p.m.
Constant Spring, <i>t.</i>	St. Andrew	6	Three times		daily		Three times		daily.	
Cornwall Mtn., <i>l.</i>	Westmoreland	115	9.30 a.m. <i>a</i>	9.30 a.m. <i>a</i>	7.30 a.m.	7.30 a.m.	3.00 p.m.	3.00 p.m.	9.20 a.m.	9.20 a.m.
Craighead, <i>tel. l.</i>	Manchester	72	9.30 a.m. <i>a</i>	9.30 a.m. <i>a</i>	6.05 p.m.	6.05 p.m.	7.00 a.m.	7.00 a.m.	3.20 p.m.	3.20 p.m.
Crofts Hill, <i>tel.</i>	Clarendon	43	6.30 a.m.	6.30 a.m.	11.15 p.m.	1.15 p.m.	5.00 a.m.	5.00 a.m.	9.15 a.m.	9.15 a.m.
CROOKED RIVER, <i>tel.</i>	Clarendon	51	6.30 a.m.	6.30 a.m.	1.00 a.m.	11.00 a.m.	6.05 p.m.	6.05 p.m.	9.15 a.m.	9.15 a.m.
			3.15 p.m. <i>c</i>	3.15 p.m. <i>c</i>	7.45 p.m.	7.45 p.m.				
Cross Keys, <i>tel.</i>	Manchester	70	9.30 a.m. <i>a</i>	9.30 a.m. <i>a</i>	3.50 p.m.	3.50 p.m.	9.35 a.m.	9.35 a.m.	3.20 p.m.	3.20 p.m.
CROSS ROADS, <i>t.</i>	St. Andrew	2	6.30 a.m.	6.30 a.m.	7.40 a.m.	7.40 a.m.	8.55 a.m.	8.55 a.m.	9.20 a.m.	9.20 a.m.
			10.30 a.m. <i>d</i>	10.30 a.m. <i>d</i>	1.10 a.m.	11.10 a.m.	12.50 p.m.	12.50 p.m.	1.00 p.m.	1.00 p.m.
			1.00 p.m. <i>b</i>	1.00 p.m. <i>b</i>	1.35 p.m.	1.35 p.m.	2.20 p.m.	2.20 p.m.	2.50 p.m.	2.50 p.m.
			3.15 p.m. <i>c</i>	3.15 p.m. <i>c</i>	4.00 p.m.	4.00 p.m.	5.30 p.m.	5.30 p.m.	5.50 p.m.	5.50 p.m.
Dallas, <i>l.</i>	do	10	3.15 p.m. <i>c</i>	3.15 p.m. <i>c</i>	7.30 p.m.	7.30 p.m.	2.35 p.m.	2.35 p.m.	8.15 a.m.	8.15 a.m.
Dalvey, <i>l.</i>	St. Thomas	48	1.00 p.m. <i>b</i>	1.00 p.m. <i>b</i>	7.20 p.m.	7.20 p.m.	3.30 p.m.	3.30 p.m.	8.15 a.m.	8.15 a.m.
DARLINGTON, <i>tel. l.</i>	Westmoreland	136	9.30 a.m. <i>a</i>	9.30 a.m. <i>a</i>	7.40 a.m.	7.40 a.m.	4.00 p.m.	4.00 p.m.	3.20 p.m.	3.20 p.m.
DEESIDE, <i>tel. l.</i>	Trelawny	107	1.00 p.m. <i>b</i>	1.00 p.m. <i>b</i>	10.05 a.m.	10.05 a.m.	1.10 p.m.	1.10 p.m.	9.15 a.m.	9.15 a.m.
Devon, <i>tel. l.</i>	Manchester	67	9.30 a.m. <i>a</i>	9.30 a.m. <i>a</i>	4.40 p.m.	4.40 p.m.	9.00 a.m.	9.00 a.m.	3.20 p.m.	3.20 p.m.
Direct Cable, <i>t.</i>	Kingston		Three times		daily.					
DRY HARBOUR, <i>t. l.</i>	St. Ann	71	1.00 p.m. <i>b</i>	1.00 p.m. <i>b</i>	6.50 a.m.	6.50 a.m.	5.30 p.m.	5.30 p.m.	9.15 a.m.	9.15 a.m.
Duan Vale, <i>tel. l.</i>	Trelawny	90	1.00 p.m. <i>b</i>	1.00 p.m. <i>b</i>	7.50 a.m.	7.50 a.m.	4.05 p.m.	4.05 p.m.	9.15 a.m.	9.15 a.m.
DUNCANS, <i>t.</i>	Trelawny	82	1.00 p.m. <i>b</i>	1.00 p.m. <i>b</i>	1.50 a.m.	1.50 a.m.	9.40 p.m.	9.40 p.m.	9.15 a.m.	9.15 a.m.
Elderslie, <i>tel. l.</i>	St. Elizabeth	91	9.30 a.m. <i>a</i>	9.30 a.m. <i>a</i>	6.00 p.m.	6.00 p.m.	6.45 a.m.	6.45 a.m.	3.20 p.m.	3.20 p.m.
ENFIELD, <i>tel. l.</i>	St. Mary	39	1.00 p.m. <i>b</i>	1.00 p.m. <i>b</i>	7.40 p.m.	7.40 a.m.	3.20 p.m.	3.20 p.m.	11.4 a.m.	11.40 a.m.
Epworth, <i>l.</i>	St. Ann	56	1.00 p.m. <i>b</i>	1.00 p.m. <i>b</i>	8.00 a.m.	8.00 a.m.	3.00 p.m.	3.00 p.m.	9.15 a.m.	9.15 a.m.
EWARTON, <i>t.</i>	St. Catherine	29	6.30 a.m.	6.30 a.m.	9.30 a.m.	9.30 a.m.	6.00 a.m.	6.00 a.m.	9.15 a.m.	9.15 a.m.
			1.00 p.m. <i>b</i>	1.00 p.m. <i>b</i>	3.50 p.m.	3.50 p.m.	9.15 a.m.	9.15 a.m.	11.40 a.m.	11.40 a.m.
							3.50 p.m.	3.50 p.m.	6.00 p.m.	6.00 p.m.



Fairy Hill, tel.	Portland	71	1.00 p.m. b	1.00 p.m. b	9.45 p.m.	9.45 p.m.	12.45 a.m.	12.45 a.m.	8.15 a.m.	8.15 a.m.
FALMOUTH, t.	Trelawny	92	1.00 p.m. b	1.00 p.m. b	3.00 a.m.	3.00 a.m.	3.40 a.m.	3.40 a.m.	3.20 p.m.	3.20 p.m.
			9.30 a.m. a	9.30 a.m. a	8.05 p.m.	8.05 p.m.	8.35 p.m.	8.35 p.m.	9.15 a.m.	9.15 a.m.
Fellowship, l.	Portland	80	1.00 p.m. b	1.00 p.m. b	7.00 a.m.	7.00 a.m.	5.05 p.m.	5.05 p.m.	8.15 a.m.	8.15 a.m.
Four Paths, tel.	Clarendon	37	6.30 a.m.	6.30 a.m.	9.30 a.m.	9.30 a.m.	6.35 a.m.	6.35 a.m.	9.15 a.m.	9.15 a.m.
			9.30 a.m. a	9.30 a.m. a	12.50 p.m.	12.50 p.m.	12.35 p.m.	12.35 p.m.	3.15 p.m.	3.15 p.m.
			3.15 p.m. c	3.15 p.m. c	6.18 p.m.	6.18 p.m.	3.20 p.m.	3.20 p.m.	6.05 p.m.	6.05 p.m.
FRANKFIELD, t.	do	57	6.30 a.m.	6.30 a.m.	11.45 a.m.	11.45 a.m.	5.00 a.m.	5.00 a.m.	9.15 a.m.	9.15 a.m.
			3.15 p.m. c	3.15 p.m. c	8.30 p.m.	8.30 p.m.	1.30 p.m.	1.30 p.m.	6.05 p.m.	6.05 p.m.
Friendship	Westmoreland	131	9.30 a.m. a	9.30 a.m. a	7.00 a.m.	7.00 a.m.	3.00 p.m.	3.00 p.m.	3.20 p.m.	3.20 p.m.
Fyffes Pen, l.	St Elizabeth	106	9.30 a.m. a	3.15 p.m. c	8.30 a.m.	8.30 a.m.	3.20 p.m.	3.20 p.m.	3.20 p.m.	9.15 a.m.
GAYLE, tel.	St. Mary	81	1.00 p.m. b	1.00 p.m. b	6.15 p.m.	6.15 p.m.	7.25 a.m.	7.25 a.m.	11.40 a.m.	11.40 a.m.
Gibraltar, l.	St. Ann	91	1.00 p.m. b	1.00 p.m. b	8.20 a.m.	8.20 a.m.	2.40 p.m.	2.40 p.m.	9.15 a.m.	9.15 a.m.
Giddy Hall	St. Elizabeth	95	9.30 a.m. a	9.30 a.m. a	6.30 p.m.	6.30 a.m.	6.30 a.m.	6.30 a.m.	3.20 p.m.	3.20 p.m.
Ginger Hill, l.	St. Elizabeth	91	9.30 a.m. a	9.30 a.m.	6.00 p.m.	6.00 p.m.	6.45 a.m.	6.45 a.m.	3.20 p.m.	3.20 p.m.
Ginger Ridge, l.	St. Catherine	56	6.30 a.m.	6.30 a.m.	2.40 p.m.	2.40 p.m.	3.10 p.m.	3.10 p.m.	9.15 a.m.	9.15 a.m.
GLENGOFFE, tel. l.	St. Catherine	20	10.30 a.m. d	10.30 a.m. d	4.25 p.m.	4.25 p.m.	7.35 a.m.	7.35 a.m.	1.00 p.m.	1.00 p.m.
GOLDEN GROVE, t.	St. Thomas	45	1.00 p.m. b	1.00 p.m. b	6.50 p.m.	6.50 p.m.	3.35 a.m.	3.35 a.m.	8.15 a.m.	8.15 a.m.
GORDON TOWN, t.	St. Andrew	9	3.15 p.m. c	3.15 p.m. c	5.36 p.m.	5.36 p.m.	7.30 a.m.	7.30 a.m.	8.50 a.m.	8.50 a.m.
GRANGE HILL, t.	Westmoreland	137	9.30 a.m. a	9.30 a.m. a	6.30 a.m.	6.30 a.m.	2.30 p.m.	2.30 p.m.	3.20 p.m.	3.20 p.m.
Grantham, tel. l.	Clarendon	60	6.30 a.m.	6.30 a.m.	2.50 p.m.	2.50 p.m.	3.50 p.m.	3.50 p.m.	9.15 a.m.	9.15 a.m.
Great Valley	Hanover	134	1.00 p.m. b	1.00 p.m. b	11.25 a.m.	11.25 a.m.	3.40 p.m.	3.40 p.m.	3.20 p.m.	3.20 p.m.
Gregory Park, t.	St. Catherine	6½	6.30 a.m.	6.30 a.m.	7.50 a.m.	7.50 a.m.	8.15 a.m.	8.15 a.m.	9.15 a.m.	9.15 a.m.
			9.30 a.m. a	9.30 a.m. a	11.15 a.m.	11.15 a.m.	2.25 p.m.	2.25 p.m.	3.15 p.m.	3.15 p.m.
			3.15 p.m. c	3.15 p.m. c	4.40 p.m.	4.40 p.m.	5.15 p.m.	5.15 p.m.	6.05 p.m.	6.05 p.m.
GREEN ISLAND, tel.	Hanover	152	1.00 p.m. b	1.00 p.m. b	11.30 a.m.	11.30 a.m.	2.35 a.m.	2.25 a.m.	9.15 a.m.	9.15 a.m.
Guanaboa Vale, l. tel.	St. Catherine	22½	6.30 a.m.	6.30 a.m.	12.15 p.m.	12.15 p.m.	3.30 p.m.	3.30 p.m.	11.40 a.m.	11.40 a.m.
GUY'S HILL, t.	St. Mary	38	1.00 p.m. b	1.00 p.m. b	5.20 p.m.	5.20 p.m.	8.20 a.m.	8.20 a.m.	8.50 a.m.	8.50 a.m.
Hagley Gap, l.	St. Thomas	19	3.15 p.m. c	3.15 p.m. c	8.55 a.m.	8.55 a.m.	4.41 p.m.	4.41 p.m.	9.20 a.m.	9.20 a.m.
HALFWAY TREE, t.	St. Andrew	3	6.30 a.m.	6.30 a.m.	8.00 a.m.	8.00 a.m.	8.40 a.m.	8.40 a.m.	9.20 a.m.	9.20 a.m.
			10.30 a.m. d	10.30 a.m. d	11.40 a.m.	11.40 a.m.	12.20 a.m.	12.20 a.m.	1.00 p.m.	1.00 p.m.
			1.00 p.m. b	1.00 p.m. b	1.50 p.m.	1.50 p.m.	2.00 p.m.	2.00 p.m.	2.50 p.m.	2.50 p.m.
			3.00 p.m. c	3.00 p.m. c	4.20 p.m.	4.20 p.m.	5.20 p.m.	5.20 p.m.	5.50 p.m.	5.50 p.m.
HAMPDEN, l. tel.	Trelawny	100	1.00 p.m. b	1.00 p.m. b	8.00 a.m.	8.00 a.m.	3.25 p.m.	3.25 p.m.	9.15 a.m.	9.15 a.m.
Hampstead, l. tel.	St. Mary	44	1.00 p.m. b	1.00 p.m. b	6.00 p.m.	6.00 p.m.	5.20 a.m.	5.20 a.m.	11.40 a.m.	11.40 a.m.
Harewood, l.	St. Catherine	29	1.00 p.m. b	1.00 p.m. b	4.00 p.m.	4.00 p.m.	8.25 a.m.	8.25 a.m.	11.20 a.m.	11.20 a.m.
Harker's Hall, l. tel.	do	30	1.00 p.m. b	1.00 p.m. b	5.45 p.m.	5.45 p.m.	7.40 a.m.	7.40 a.m.	11.40 a.m.	11.40 a.m.
Harmons	Manchester	53	6.30 a.m.	6.30 a.m.	3.20 p.m.	3.20 p.m.	10.15 a.m.	10.15 a.m.	3.20 p.m.	3.20 p.m.
Harry Watch, l.	do	67	9.30 a.m. a	9.30 a.m. a	4.40 p.m.	4.40 p.m.	9.00 a.m.	9.00 a.m.	3.20 p.m.	3.20 p.m.



Office.	Parish.	Miles from Kingston.	Post at Kingston.		Arrive at D.P.O. from Kingston.		Leave D.P.O. for Kingston.		Arrive at Kingston.	
			Mon., Wed. and Fri.	Tues., Thurs. and Sat.	Mon., Wed. and Fri.	Tues., Thurs. and Sat.	Mon., Wed. and Fri.	Tues., Thurs. and Sat.	Mon., Wed. and Fri.	Tues., Thurs. and Sat.
Hartlands, <i>Ry. t.</i>	St. Catherine	15	6.30 a.m. 3.15 p.m. <i>c</i>	6.30 a.m. 3.15 p.m. <i>c</i>	8.35 a.m. 5.05 p.m.	8.35 a.m. 5.05 p.m.	7.40 a.m. 4.35 p.m.	7.40 a.m. 4.35 p.m.	9.15 a.m. 6.15 p.m.	9.15 a.m. 6.15 p.m.
Hayes, <i>tel.</i>	Clarendon	40	6.30 a.m.	6.30 a.m.	10.05 a.m.	10.05 a.m.	6.05 a.m.	6.05 a.m.	9.15 a.m.	9.15 a.m.
HECTOR'S RIVER, <i>t.</i>	Portland	51	1.00 p.m. <i>b</i>	1.00 p.m. <i>b</i>	7.35 p.m.	7.35 p.m.	2.50 a.m.	2.50 a.m.	8.15 a.m.	8.15 a.m.
HIGHGATE, <i>t.</i>	St. Mary	38	1.00 p.m. <i>b</i>	1.00 p.m. <i>b</i>	4.45 p.m.	4.45 p.m.	7.20 a.m.	7.20 a.m.	11.40 a.m.	11.40 a.m.
HOPE BAY, <i>t.</i>	Portland	49	1.00 p.m. <i>b</i>	1.00 p.m. <i>b</i>	6.15 p.m.	6.15 p.m.	7.00 a.m.	7.00 a.m.	11.40 a.m.	11.40 a.m.
HOPEWELL, <i>tel.</i>	Hanover	126	1.00 p.m. <i>b</i>	1.00 p.m. <i>b</i>	8.50 a.m.	8.50 a.m.	5.15 a.m.	5.15 a.m.	3.20 p.m.	3.20 p.m.
Inverness, <i>t.</i>	St. Ann	78	9.30 a.m. <i>a</i> 1.00 p.m. <i>b</i>	9.30 a.m. <i>a</i> 1.00 p.m. <i>b</i>	5.30 p.m. 7.40 a.m.	5.30 p.m. 7.40 a.m.	7.45 a.m. 5.35 p.m.	7.45 a.m. 5.35 p.m.	3.20 p.m. 9.15 a.m.	3.20 p.m. 9.15 a.m.
Ipswich, <i>Ry. t.</i>	St. Elizabeth	86	9.30 a.m. <i>a</i>	9.30 a.m. <i>a</i>	4.05 p.m.	4.05 p.m.	8.45 a.m.	8.45 a.m.	3.20 p.m.	3.20 p.m.
Islington, <i>t. tel.</i>	St. Mary	46	1.00 p.m. <i>b</i>	1.00 p.m. <i>b</i>	6.40 p.m.	6.40 p.m.	6.45 a.m.	6.45 a.m.	11.40 a.m.	11.40 a.m.
Jackson Town, <i>tel.</i>	Trelawny	90	1.00 p.m. <i>b</i>	1.00 p.m. <i>b</i>	12.55 a.m.	12.55 a.m.	10.40 p.m.	10.40 p.m.	9.15 a.m.	9.15 a.m.
James Hill, <i>t. tel.</i>	Clarendon	60	6.30 a.m.	6.30 a.m.	3.20 p.m.	3.20 p.m.	3.30 p.m.	3.30 p.m.	9.15 a.m.	9.15 a.m.
Jericho, <i>t.</i>	Hanover	143	1.00 p.m. <i>b</i>	1.00 p.m. <i>b</i>	12.10 p.m.	12.10 p.m.	6.35 p.m.	6.35 p.m.	3.20 p.m.	3.20 p.m.
Johns Hall, <i>t. tel.</i>	St. James	123	1.00 p.m. <i>b</i>	1.00 p.m. <i>b</i>	8.30 a.m.	8.30 a.m.	4.15 p.m.	4.15 p.m.	9.15 a.m.	9.15 a.m.
Jones Pen, <i>t. tel.</i>	St. Andrew	1	Three times daily.							
Kalorama	St. Andrew	14	1.00 p.m. <i>b</i>	1.00 p.m. <i>b</i>	4.35 p.m.	4.35 p.m.	6.00 a.m.	6.00 a.m.	8.15 a.m.	8.15 a.m.
Keith, <i>t.</i>	St. Ann	73	1.00 p.m. <i>b</i>	1.00 p.m. <i>b</i>	6.30 a.m.	6.30 a.m.	3.30 p.m.	3.30 p.m.	9.15 a.m.	9.15 a.m.
Kellits, <i>tel.</i>	Clarendon	47	6.30 a.m.	6.30 a.m.	2.15 p.m.	2.15 p.m.	4.20 p.m.	4.20 p.m.	9.15 a.m.	9.15 a.m.
Lacovia, <i>t.</i>	St. Elizabeth	85	9.30 a.m. <i>a</i>	9.30 a.m. <i>a</i> 3.15 p.m. <i>c</i>	4.40 p.m.	11.00 p.m.	8.15 a.m. 6.05 p.m.	8.15 a.m.	3.20 p.m. 9.15 a.m.	9.15 a.m.
LAMB'S RIVER, <i>t. tel.</i>	Westmoreland	103	9.30 a.m. <i>a</i>	9.30 a.m. <i>a</i>	7.05 p.m.	7.05 p.m.	6.15 a.m.	6.15 a.m.	3.20 p.m.	3.20 p.m.
Lascelles, <i>t.</i>	Kingston	..	Three times daily.							
Laughlands, <i>tel.</i>	St. Ann	61	1.00 p.m. <i>b</i>	1.00 p.m. <i>b</i>	10.00 p.m.	10.00 p.m.	1.25 a.m.	1.25 a.m.	9.15 a.m.	9.15 a.m.
LAWRENCE TAVERN, <i>tel.</i>	St. Andrew	15	10.30 a.m. <i>d</i>	10.30 a.m. <i>d</i>	2.55 p.m.	2.55 p.m.	9.05 a.m.	9.05 a.m.	1.00 p.m.	1.00 p.m.
Leamington	Westmoreland	104½	9.30 a.m. <i>a</i>	9.30 a.m. <i>a</i>	6.30 a.m.	6.30 a.m.	3.00 p.m.	3.00 p.m.	3.20 p.m.	3.20 p.m.
Liguanea, <i>tel.</i>	St. Andrew	5	3.15 p.m. <i>c</i>	3.15 p.m. <i>c</i>	4.55 p.m.	4.55 p.m.	7.30 a.m. 4.00 p.m.	7.30 a.m. 4.00 p.m.	8.15 a.m. 5.15 p.m.	8.15 a.m. 5.15 p.m.
Lime Hall, <i>tel.</i>	St. Ann	53	1.00 p.m. <i>b</i>	1.00 p.m. <i>b</i>	6.25 p.m.	6.25 p.m.	3.05 a.m.	3.05 a.m.	9.15 a.m.	9.15 a.m.
Lincoln, <i>t.</i>	Manchester	70	9.30 a.m. <i>a</i>	3.15 p.m. <i>c</i>	8.00 a.m.	8.00 a.m.	4.00 p.m.	4.00 p.m.	3.20 p.m.	9.15 a.m.
LINSTEAD, <i>t</i>	St. Catherine	24	6.30 a.m. 1.00 p.m. <i>b</i>	6.30 a.m. 1.00 p.m. <i>b</i>	9.15 a.m. 3.55 p.m.	9.15 a.m. 3.55 p.m.	9.30 a.m. 4.00 p.m.	9.30 a.m. 4.00 p.m.	11.40 a.m. 6.15 p.m.	11.40 a.m. 6.15 p.m.



Little London, tel.	Westmoreland	135	9.30 a.m. a	9.30 a.m. a	6.10 a.m.	6.10 a.m.	4.05 p.m.	4.05 p.m.	3.20 p.m.	3.20 p.m.
Little River, tel.	St. James	103	1.00 p.m. b	1.00 p.m. b	4.30 a.m.	4.30 a.m.	7.15 p.m.	7.15 p.m.	9.15 a.m.	9.15 a.m.
			9.30 a.m. a	9.30 a.m. a	7.10 p.m.	7.10 p.m.	4.35 a.m.	4.35 a.m.	3.20 p.m.	3.20 p.m.
Llandewey	St. Thomas	17½	1.00 p.m. b	1.00 p.m. b	5.45 p.m.	5.45 p.m.	5.00 a.m.	5.00 a.m.	8.15 a.m.	8.15 a.m.
LLUDAS VALE, tel.	St. Catherine	37	6.30 a.m.	6.30 a.m.	11.20 a.m.	11.20 a.m.	4.00 a.m.	4.00 a.m.	9.15 a.m.	9.15 a.m.
Lodge, l. tel.	St. Ann	68	1.00 p.m. b	1.00 p.m. b	8.40 a.m.	8.40 a.m.	4.00 p.m.	4.00 p.m.	9.15 a.m.	9.15 a.m.
Long Bay, tel.	Portland	68½	1.00 p.m. b	1.00 p.m. b	8.45 p.m.	8.45 p.m.	1.40 a.m.	1.40 a.m.	8.15 a.m.	8.15 a.m.
LOTTERY, l. tel.	St. James	123	1.00 p.m. b	1.00 p.m. b	10.05 a.m.	10.05 a.m.	2.25 p.m.	2.25 p.m.	9.15 a.m.	9.15 a.m.
LUCEA, l.	Hanover	139	1.00 p.m. b	1.00 p.m. b	9.30 a.m.	9.30 a.m.	3.50 a.m.	3.50 a.m.	3.20 p.m.	3.20 p.m.
Lucky Hill, tel.	St. Mary	36	1.00 p.m. b	1.00 p.m. b	6.00 p.m.	6.00 p.m.	7.40 a.m.	7.40 a.m.	11.40 a.m.	11.40 a.m.
MAGGOTTY, Ry. l.	St. Elizabeth	83	9.30 a.m. a	9.30 a.m. a	3.35 p.m.	3.35 p.m.	9.45 a.m.	9.45 a.m.	3.20 p.m.	3.20 p.m.
Maidstone, l.	Manchester	69	9.30 a.m. a	9.30 a.m. a	5.00 p.m.	5.00 p.m.	8.20 a.m.	8.20 a.m.	3.20 p.m.	3.20 p.m.
MALVERN, l.	St. Elizabeth	87	9.30 a.m. a	9.30 a.m. a	5.48 p.m.	5.48 p.m.	7.10 a.m.	7.10 a.m.	3.20 p.m.	3.20 p.m.
MANCHIONEAL, t.	Portland	56	1.00 p.m. b	1.00 p.m. b	8.05 p.m.	8.05 p.m.	2.20 a.m.	2.20 a.m.	8.15 a.m.	8.15 a.m.
MANDEVILLE, t.	Manchester	58	9.30 a.m. a	9.30 a.m. a	2.20 p.m.	2.20 p.m.	5.30 a.m.	5.30 a.m.	9.15 a.m.	9.15 a.m.
			3.15 p.m. c	3.15 p.m. c	8.00 p.m.	8.00 p.m.	11.15 a.m.	11.15 a.m.	3.20 p.m.	3.20 p.m.
Maryland	Hanover	146	1.00 p.m. b	1.00 p.m. b	1.05 p.m.	1.05 p.m.	3.40 p.m.	3.40 p.m.	3.20 p.m.	3.20 p.m.
MAVIS BANK, l. tel.	St. Andrew	14	3.15 p.m. c	3.15 p.m. c	7.02 a.m.	7.02 a.m.	6.34 p.m.	6.34 p.m.	8.50 a.m.	8.50 a.m.
MAY PEN, t.	Clarendon	32½	6.30 a.m.	6.30 a.m.	9.20 a.m.	9.20 a.m.	7.00 a.m.	7.00 a.m.	9.15 a.m.	9.15 a.m.
			9.30 a.m. a	9.30 a.m. a	12.35 p.m.	12.35 p.m.	1.00 p.m.	1.00 p.m.	3.15 p.m.	3.15 p.m.
			3.15 p.m. c	3.15 p.m. c	6.05 p.m.	6.05 p.m.	3.50 p.m.	3.50 p.m.	6.05 p.m.	6.05 p.m.
Middle Quarters, tel.	St. Elizabeth	89		3.15 p.m. c	7.00 a.m.	—	5.40 p.m.	—	—	9.15 a.m.
		94	9.30 a.m. a	9.30 a.m. a	5.10 p.m.	5.10 p.m.	7.45 a.m.	7.45 a.m.	3.20 p.m.	3.20 p.m.
MILE GULLY, t.	Manchester	61	9.30 a.m. a	9.30 a.m. a	2.30 p.m.	2.30 p.m.	10.30 a.m.	10.30 a.m.	3.20 p.m.	3.20 p.m.
Milk River, tel. &	Clarendon	49	6.30 a.m.	6.30 a.m.	1.35 p.m.	1.35 p.m.	4.00 p.m.	4.00 p.m.	9.15 a.m.	9.15 a.m.
Mocho, l. tel.	do	44	6.30 a.m.	6.30 a.m.	12.05 p.m.	12.05 p.m.	4.10 p.m.	4.10 p.m.	9.15 a.m.	9.15 a.m.
MONEAGUE, t.	St. Ann	39	1.00 p.m. b	1.00 p.m. b	5.05 p.m.	5.05 p.m.	4.25 a.m.	4.25 a.m.	9.15 p.m.	9.15 a.m.
MONTEGO BAY, t.	St. James by rd.	117	1.00 p.m. b	1.00 p.m. b	5.25 a.m.	5.25 a.m.	6.20 p.m.	6.20 p.m.	9.15 a.m.	9.15 a.m.
	by rail	113	9.30 a.m. a	9.30 a.m. a	6.10 p.m.	6.10 p.m.	7.00 a.m.	7.00 a.m.	3.20 p.m.	3.20 p.m.
MONTPELIER, tel.	St. James	103	9.30 a.m. a	9.30 a.m. a	5.20 p.m.	5.20 p.m.	8.00 a.m.	8.00 a.m.	3.20 p.m.	3.20 p.m.
Moore Town, l.	Portland	86	1.00 p.m. b	1.00 p.m. b	9.05 a.m.	9.05 a.m.	3.00 p.m.	3.00 p.m.	8.15 a.m.	8.15 a.m.
MORANT BAY, t.	St. Thomas	31	1.00 p.m. b	1.00 p.m. b	4.30 p.m.	4.30 a.m.	6.00 a.m.	6.00 a.m.	8.15 a.m.	8.15 a.m.
Moravia	Manchester	67½	9.30 a.m. a	9.30 a.m. a	4.40 p.m.	4.40 p.m.	8.20 a.m.	8.20 a.m.	3.20 p.m.	3.20 p.m.
Mount Horeb, l.	St. James	102	9.30 a.m. a	9.30 a.m. a	6.30 p.m.	6.30 p.m.	6.50 a.m.	6.50 a.m.	3.20 p.m.	3.20 p.m.
Mount James, l.	St. Andrew	14	10.30 a.m.	10.30 a.m.	2.55 p.m.	2.55 p.m.	9.00 a.m.	9.00 a.m.	12.45 p.m.	12.45 p.m.
Mount Regale, l.	St. Mary	41	1.00 p.m. b	1.00 p.m. b	6.50 p.m.	6.50 p.m.	6.45 a.m.	6.45 a.m.	11.40 a.m.	11.40 a.m.
Mountainside, tel. l.	St. Elizabeth	106	9.30 a.m. a	3.15 p.m. c	7.40 a.m.	7.40 a.m.	3.20 p.m.	3.20 p.m.	3.20 p.m.	9.15 a.m.
Munro, tel. l.	do	92	9.30 a.m. a	9.30 a.m. a	6.35 p.m.	6.35 p.m.	6.35 a.m.	6.35 a.m.	3.20 p.m.	3.20 p.m.
Myers' Wharf, t.	Kingston	1	Three	times	daily.					



Office.	Parish.	Miles from Kingston.	Post at Kingston.		Arrive at D.P.O. from Kingston.		Leave D.P.O. for Kingston.		Arrive at Kingston.	
			Mon., Wed. and Fri.	Tues., Thurs. and Sat.	Mon., Wed. and Fri.	Tues., Thurs. and Sat.	Mon., Wed. and Fri.	Tues., Thurs. and Sat.	Mon., Wed. and Fri.	Tues., Thurs. and Sat.
Myersville, <i>l. tel.</i>	St. Elizabeth	87	9.30 a.m. <i>a</i>	3.15 p.m. <i>c</i>	7.15 a.m.	7.15 a.m.	3.45 p.m.	3.45 p.m.	3.20 p.m.	9.15 a.m.
Myrtle Bank, <i>t.</i>	Kingston	..	Three	times	daily.					
Negril, <i>tel.</i>	Westmoreland	147	9.30 a.m. <i>a</i>	9.30 a.m. <i>a</i>	9.45 a.m.	9.45 a.m.	12.30 p.m.	12.30 p.m.	3.20 p.m.	3.20 p.m.
NEWCASTLE, <i>tel.</i>	St. Andrew	14	3.15 p.m. <i>c</i>	3.15 p.m. <i>c</i>	7.41 p.m.	7.41 p.m.	5.35 a.m.	5.35 a.m.	8.15 a.m.	8.15 a.m.
NEWMARKET, <i>tel.</i>	St. Elizabeth	100	9.30 a.m. <i>a</i>	9.30 a.m. <i>a</i>	8.09 p.m.	8.00 p.m.	5.00 a.m.	5.00 a.m.	3.20 p.m.	3.20 p.m.
NEWPORT, <i>tel.</i>	Manchester	64	9.30 a.m. <i>a</i>	9.30 a.m. <i>a</i>	3.15 p.m.	3.15 p.m.	10.10 a.m.	10.10 a.m.	3.20 p.m.	3.20 p.m.
OCHO RIOS, <i>t.</i>	St. Ann	64	1.00 p.m. <i>b</i>	1.00 p.m. <i>b</i>	3.25 a.m.	3.25 a.m.	8.35 p.m.	8.35 p.m.	9.15 a.m.	9.15 a.m.
Old England, <i>l.</i>	Manchester	65	9.30 a.m. <i>a</i>	9.30 a.m. <i>a</i>	4.55 p.m.	4.55 p.m.	8.30 a.m.	8.30 a.m.	3.20 p.m.	3.20 p.m.
OLD HARBOUR, <i>t.</i>	St. Catherine	24	6.30 a.m.	6.30 a.m.	8.45 a.m.	8.45 a.m.	7.20 a.m.	7.20 a.m.	9.15 a.m.	9.15 a.m.
			9.30 a.m. <i>a</i>	9.30 a.m. <i>a</i>	12.05 p.m.	12.05 p.m.	1.25 p.m.	1.25 p.m.	3.15 p.m.	3.15 p.m.
			3.15 p.m. <i>c</i>	3.15 p.m. <i>c</i>	4.45 p.m.	4.45 p.m.	4.10 p.m.	4.10 p.m.	6.05 p.m.	6.05 p.m.
Old Harbour Bay, <i>l.</i>	St. Catherine	27	9.30 a.m. <i>a</i>	9.30 a.m. <i>a</i>	1.40 p.m.	1.40 p.m.	9.40 a.m.	9.40 a.m.	3.20 p.m.	3.20 p.m.
ORACABESSA, <i>t.</i>	St. Mary	79	1.00 p.m. <i>b</i>	1.00 p.m. <i>b</i>	6.55 p.m.	6.55 p.m.	7.00 p.m.	7.00 p.m.	9.45 a.m.	9.45 a.m.
Orange Bay, <i>Ry. t.</i>	Portland	43	1.00 p.m. <i>b</i>	1.00 p.m. <i>b</i>	5.50 p.m.	5.50 p.m.	7.15 a.m.	7.15 a.m.	11.40 a.m.	11.40 a.m.
PEAR TREE GROVE, <i>l. tel.</i>	St. Catherine	40	1.00 p.m. <i>b</i>	1.00 p.m. <i>b</i>	6.30 p.m.	6.30 p.m.	7.00 a.m.	7.00 a.m.	11.40 a.m.	11.40 a.m.
Pedro, <i>tel. l.</i>	St. Ann	53	1.00 p.m. <i>b</i>	1.00 p.m. <i>b</i>	8.00 a.m.	8.00 a.m.	3.40 p.m.	3.40 p.m.	9.15 a.m.	9.15 a.m.
Pedro Plains, <i>l.</i>	St. Elizabeth	113	9.30 a.m. <i>a</i>	3.15 p.m. <i>c</i>	9.45 a.m.	9.45 a.m.	1.15 p.m.	1.15 p.m.	3.20 p.m.	9.15 a.m.
Pembroke Hall, <i>tel.</i>	St. Mary	86	1.00 p.m. <i>b</i>	1.00 p.m.	7.35 p.m.	7.35 p.m.	6.00 a.m.	6.00 a.m.	11.40 a.m.	11.40 a.m.
Pepper	St. Elizabeth	71	9.30 a.m. <i>a</i>	3.15 p.m. <i>c</i>	7.20 p.m.	9.35 p.m.	7.25 p.m.	9.40 p.m.	3.20 p.m.	9.15 a.m.
PETERSFIELD, <i>tel.</i>	Westmoreland	129	9.30 a.m. <i>a</i>	9.30 a.m. <i>a</i>	7.40 p.m.	7.40 p.m.	5.35 a.m.	5.35 a.m.	3.20 p.m.	3.20 p.m.
Point, <i>l.</i>	St. James	127	1.00 p.m. <i>b</i>	1.00 p.m. <i>b</i>	10.50 a.m.	10.50 a.m.	1.30 p.m.	6.00 a.m.	9.15 a.m.	9.15 a.m.
POINT HILL, <i>tel. l.</i>	St. Catherine	43	6.30 a.m.	6.30 a.m.	1.15 p.m.	1.15 p.m.	4.30 p.m.	4.30 p.m.	9.15 a.m.	9.15 a.m.
PORT ANTONIO, <i>t.</i>	Portland by road	77	—	—	—	—	12.00 m.	12.00 m.	8.15 a.m.	8.15 a.m.
PORT ANTONIO, <i>t.</i>	Portland by rail	75	1.00 p.m. <i>b</i>	1.00 p.m. <i>b</i>	6.50 p.m.	6.50 p.m.	6.00 a.m.	6.00 a.m.	11.40 a.m.	11.40 a.m.
PORT MARIA, <i>t.</i>	St. Mary	50	1.00 p.m. <i>b</i>	1.00 p.m. <i>b</i>	5.40 p.m.	5.40 p.m.	6.30 a.m.	6.30 a.m.	11.40 a.m.	11.40 a.m.
							6.15 p.m.	6.15 p.m.	9.15 a.m.	9.15 a.m.
PORT MORANT, <i>t.</i>	St. Thomas	39	1.00 p.m. <i>b</i>	1.00 p.m. <i>b</i>	5.20 p.m.	5.20 p.m.	5.05 a.m.	5.05 a.m.	8.15 a.m.	8.15 a.m.



PORT ROYAL, <i>t.</i>	Port Royal	6	3.15 p.m. c	3.15 p.m. c	5.30 p.m.	5.30 p.m.	10.30 a.m.	10.30 a.m.	11.45 a.m.	11.45 a.m.
PORUS, <i>t.</i>	Manchester	47	6.30 a.m.	6.30 a.m.	10.00 a.m.	10.00 a.m.	6.00 a.m.	6.00 a.m.	9.15 a.m.	9.15 a.m.
			9.30 a.m. a	9.30 a.m. a	1.20 p.m.	1.20 p.m.	12.05 p.m.	12.05 p.m.	3.15 p.m.	3.15 p.m.
			3.15 p.m. c	3.15 p.m. c	6.45 p.m.	6.45 p.m.	2.55 p.m.	2.55 p.m.	6.05 p.m.	6.05 p.m.
Pratville, <i>l. tel.</i>	do	73	9.30 a.m. a	9.30 a.m. a	6.10 p.m.	6.10 p.m.	7.15 a.m.	7.15 a.m.	3.20 p.m.	3.20 p.m.
PRIESTMAN'S RIVER, <i>t.</i>	Portland	65	1.00 p.m. b	1.00 p.m. b	9.10 p.m.	9.10 p.m.	1.15 a.m.	1.15 a.m.	8.15 a.m.	8.15 a.m.
Race Course, <i>tel.</i>	Clarendon	50	6.30 a.m.	6.30 a.m.	11.10 a.m.	11.10 a.m.	5.05 a.m.	5.05 a.m.	9.15 a.m.	9.15 a.m.
Ramble, <i>tel.</i>	Hanover	109	9.30 a.m. a	9.30 a.m. a	6.45 p.m.	6.45 p.m.	6.30 a.m.	6.30 a.m.	3.20 p.m.	3.20 p.m.
Red Hills, <i>l.</i>	St. Andrew	10	3.15 p.m. c	3.15 p.m. c	7.30 p.m.	7.30 p.m.	5.40 a.m.	5.40 a.m.	8.45 a.m.	8.45 a.m.
Redwood, <i>l.</i>	St. Catherine	31	6.30 a.m.	6.30 a.m.	12.10 p.m.	12.10 p.m.	7.15 a.m.	7.15 a.m.	11.40 a.m.	11.40 a.m.
RETREAT, <i>t.</i>	St. Mary	73	1.00 p.m. b	1.00 p.m. b	7.30 p.m.	7.30 p.m.	7.45 p.m.	7.45 p.m.	9.15 a.m.	9.15 a.m.
RICHMOND, <i>l.</i>	do	36	1.00 p.m. b	1.00 p.m. b	4.30 p.m.	4.30 p.m.	8.30 a.m.	8.30 a.m.	11.40 a.m.	11.40 a.m.
Richmond Park	Clarendon	52	6.30 a.m.	6.30 a.m.	11.10 p.m.	11.10 p.m.	4.00 p.m.	4.00 p.m.	9.15 a.m.	9.15 a.m.
Rio Bueno, <i>t. l.</i>	Trelawny	76	1.00 p.m. b	1.00 p.m. b	7.30 a.m.	7.30 a.m.	4.30 p.m.	4.30 p.m.	9.15 a.m.	9.15 a.m.
RIVERSDALE, <i>Ry. t.</i>	St. Catherine	26½	1.00 p.m. b	1.00 p.m. b	3.40 p.m.	3.40 p.m.	9.30 a.m.	9.30 a.m.	11.40 a.m.	11.40 a.m.
RIVERSIDE, <i>tel. l.</i>	Hanover	145	9.30 a.m. a	9.30 a.m. a	1.10 p.m.	1.10 p.m.	7.50 a.m.	7.50 a.m.	3.20 p.m.	3.20 p.m.
ROCK RIVER, <i>tel. l.</i>	Clarendon	51	6.30 a.m.	6.30 a.m.	1.30 p.m.	1.30 p.m.	4.30 p.m.	4.30 p.m.	9.15 a.m.	9.15 a.m.
Rose Hall, <i>l.</i>	St. Elizabeth	45	9.30 a.m. a	9.30 a.m. a	9.20 a.m.	9.20 a.m.	2.55 p.m.	2.55 p.m.	3.20 p.m.	3.20 p.m.
Runaway Bay, <i>tel.</i>	St. Ann	67	1.00 p.m.	1.00 p.m. b	10.35 p.m.	10.35 p.m.	12.50 a.m.	12.50 a.m.	9.15 a.m.	9.15 a.m.
ST. ANN'S BAY, <i>t.</i>	do	57	1.00 p.m. b	1.00 p.m. b	6.50 p.m.	6.50 p.m.	2.40 a.m.	2.40 a.m.	9.15 a.m.	9.15 a.m.
ST. MARG. BAY, <i>Ry. t.</i>	Portland	53	1.00 p.m. b	1.00 p.m. b	6.20 p.m.	6.20 p.m.	6.50 a.m.	6.50 a.m.	11.40 a.m.	11.40 a.m.
St. Peters, <i>l.</i>	St. Andrew	18	3.15 p.m. c	3.15 p.m. c	6.20 a.m.	6.20 a.m.	4.40 p.m.	4.40 p.m.	8.50 a.m.	8.50 a.m.
Salisbury, <i>l.</i>	St. Ann	69	1.00 p.m. b	1.00 p.m. b	7.40 a.m.	7.40 a.m.	3.30 p.m.	3.30 p.m.	9.15 a.m.	9.15 a.m.
Salt River, <i>tel. l.</i>	Clarendon	56	6.30 a.m.	6.30 a.m.	12.35 p.m.	12.35 p.m.	5.00 p.m.	5.00 p.m.	9.15 a.m.	9.15 a.m.
Sandy Bay, <i>tel.</i>	Hanover	130	1.00 p.m. b	1.00 p.m. b	9.15 a.m.	9.15 a.m.	4.50 a.m.	4.50 a.m.	3.20 p.m.	3.20 p.m.
SANTA CRUZ, <i>t.</i>	St. Elizabeth	79	9.30 a.m. a	3.15 p.m. c	4.45 p.m.	10.20 p.m.	6.40 p.m.	—	3.20 p.m.	9.15 a.m.
		78	—	9.30 a.m. a	—	4.45 p.m.	8.15 a.m.	8.15 a.m.	—	3.20 p.m.
SAVANNA-LA-MAR, <i>t.</i>	Westmoreland	128	9.30 a.m. a	9.30 a.m. a	8.15 p.m.	8.15 p.m.	5.00 a.m.	5.00 a.m.	3.20 p.m.	3.20 p.m.
		125	—	3.15 p.m. c	9.45 a.m.	—	2.00 p.m.	—	—	9.15 a.m.
Sawyers, <i>l. tel.</i>	Trelawny	94	1.00 p.m. b	1.00 p.m. b	7.20 a.m.	7.20 a.m.	4.45 p.m.	4.45 p.m.	9.15 a.m.	9.15 p.m.
SEAFORTH, <i>tel. l.</i>	St. Thomas	37	1.00 p.m. b	1.00 p.m. b	5.20 p.m.	5.20 p.m.	5.20 a.m.	5.20 a.m.	8.15 a.m.	8.15 a.m.
Sherwood Content, <i>l.</i>	Trelawny	100	1.00 p.m. b	1.00 p.m. b	9.50 a.m.	9.50 a.m.	3.00 p.m.	9.15 a.m.	9.15 a.m.	3.00 p.m.
Shooter's Hill, <i>tel.</i>	Manchester	55	6.30 a.m.	6.30 a.m.	11.10 a.m.	11.10 a.m.	5.30 a.m.	5.30 a.m.	9.15 a.m.	9.15 a.m.
			9.30 a.m. a	9.30 a.m. a	2.00 p.m.	2.00 p.m.	11.15 a.m.	11.15 a.m.	3.20 p.m.	3.20 p.m.
Siloah, <i>Ry. t.</i> (Appel- ton)	St. Elizabeth	78	3.15 p.m. c	3.15 p.m. c	7.20 p.m.	7.20 p.m.	1.50 p.m.	1.50 p.m.	6.05 p.m.	6.05 p.m.
			9.30 a.m. a	9.30 a.m. a	3.50 p.m.	3.50 p.m.	9.30 a.m.	9.30 a.m.	3.20 p.m.	3.20 p.m.
Skibo, <i>l.</i>	Portland	46	1.00 p.m. b	1.00 p.m. b	9.55 a.m.	9.55 a.m.	3.20 p.m.	3.20 p.m.	11.40 a.m.	11.40 a.m.
Sligoville	St. Catherine	23	6.30 a.m.	6.30 a.m.	12.25 p.m.	12.25 p.m.	3.20 p.m.	3.20 p.m.	9.15 a.m.	9.15 a.m.



Office.	Parish.	Miles from Kingston	Post at Kingston.		Arrive at D.P.O. from Kingston.		Leave D.P.O. for Kingston.		Arrive at Kingston	
			Mon., Wed. and Fri.	Tues., Thurs. and Sat.	Mon., Wed. and Fri.	Tues., Thurs. and Sat.	Mon., Wed. and Fri.	Tues., Thurs. and Sat.	Mon., Wed. and Fri.	Tues., Thurs. and Sat.
SMITH'S VILLAGE, <i>tel.</i>	Kingston	1	6.30 a.m. noon 3.00 p.m.	6.30 a.m. noon 3.00 p.m.	9.00 a.m. 12.45 p.m. 4.00 p.m.	9.00 a.m. 12.45 p.m. 4.00 p.m.	9.10 a.m. 1.00 p.m. 4.10 p.m.	9.10 a.m. 1.00 p.m. 4.35 p.m.	9.40 a.m. 1.20 p.m. 4.35 p.m.	9.40 a.m. 1.20 p.m. 4.35 p.m.
Smithville <i>l. tel.</i>	Clarendon	51	6.30 a.m.	6.30 a.m.	2.45 p.m.	2.45 p.m.	12.30 p.m.	12.30 p.m.	9.15 a.m.	9.15 a.m.
Somerton, <i>l.</i>	St. James	123	1.00 p.m. <i>b</i>	1.00 p.m. <i>b</i>	12.30 p.m.	12.30 p.m.	1.40 p.m.	1.40 p.m.	9.15 a.m.	9.15 a.m.
Southfield, <i>tel. l.</i>	St. Elizabeth	82	9.30 a.m. <i>a</i>	9.30 a.m. <i>a</i>	7.05 p.m.	7.05 p.m.	6.05 a.m.	6.05 a.m.	3.20 p.m.	3.20 p.m.
SPALDINGS, <i>l.</i>	Clarendon	62	9.30 a.m. <i>a</i>	9.30 a.m. <i>a</i>	3.43 p.m.	3.43 p.m.	9.32 a.m.	9.32 a.m.	3.20 p.m.	3.20 p.m.
SPANISH TOWN, <i>l.</i>	St. Catherine	12	Four times daily.	Four times daily.						
SPRINGFIELD, <i>l.</i>	St. Elizabeth	107	9.30 a.m. <i>a</i>	9.30 a.m. <i>a</i>	6.30 p.m.	6.30 p.m.	6.20 a.m.	6.20 a.m.	3.20 p.m.	3.20 p.m.
Spring Hill, <i>l. tel.</i>	Portland	52	1.00 p.m. <i>b</i>	1.00 p.m. <i>b</i>	noon	noon	1.20 p.m.	1.20 p.m.	11.40 a.m.	11.40 a.m.
Spur Tree, <i>tel.</i>	Manchester	67	9.30 a.m. <i>a</i>	3.15 p.m. <i>c</i>	8.00 p.m.	9.00 p.m.	8.00 p.m.	9.00 p.m.	3.20 p.m.	9.15 a.m.
STEWART TOWN, <i>tel.</i>	Trelawny	85	1.00 p.m. <i>b</i>	1.00 p.m. <i>b</i>	12.30 a.m.	12.30 a.m.	11.10 p.m.	11.10 p.m.	9.15 a.m.	9.15 a.m.
STONY HILL, <i>l.</i>	St. Andrew	9½	10.30 a.m. <i>d</i> 3.15 p.m. <i>c</i>	10.30 a.m. <i>d</i> 3.15 p.m. <i>c</i>	1.00 p.m.	1.00 p.m.	11.00 a.m.	11.00 a.m.	12.45 p.m.	12.45 p.m.
Sturge Town, <i>l.</i>	St. Ann	84	1.00 p.m. <i>b</i>	1.00 p.m. <i>b</i>	6.10 a.m.	6.10 a.m.	3.30 p.m.	3.30 p.m.	9.15 a.m.	9.15 a.m.
Sunning Hill, <i>l.</i>	St. Thomas	44	1.00 p.m. <i>b</i>	1.00 p.m. <i>b</i>	2.00 a.m.	2.00 a.m.	4.00 p.m.	4.00 p.m.	8.15 a.m.	8.15 a.m.
Swift River, <i>l. tel.</i>	Portland	52	1.00 p.m. <i>b</i>	1.00 p.m. <i>b</i>	9.10 a.m.	9.10 a.m.	3.30 p.m.	3.30 p.m.	11.40 a.m.	11.40 a.m.
Thompson Twn. <i>l. tel.</i>	Clarendon	48	6.30 a.m.	6.30 a.m.	1.30 p.m.	1.30 p.m.	2.45 p.m.	2.45 p.m.	9.15 a.m.	9.15 a.m.
Toll Gate, <i>l.</i>	do	41	6.30 a.m.	6.30 a.m.	11.00 a.m.	11.00 a.m.	6.35 p.m.	6.35 p.m.	9.15 a.m.	9.15 a.m.
TRINITY VILLE, <i>tel. l.</i>	St. Thomas	28	1.00 p.m. <i>c</i>	1.00 p.m. <i>c</i>	5.55 p.m.	5.55 p.m.	4.50 a.m.	4.50 a.m.	8.15 a.m.	8.15 a.m.
TROJA, <i>Ry. l.</i>	St. Catherine	31	1.00 p.m. <i>b</i>	1.00 p.m. <i>b</i>	4.15 p.m.	4.15 p.m.	8.45 a.m.	8.45 a.m.	11.40 a.m.	11.40 a.m.
Trout Hall, <i>b. tel.</i>	Clarendon	53	6.30 a.m. 3.15 p.m. <i>c</i>	6.30 a.m. 3.15 p.m. <i>c</i>	11.00 a.m. 7.50 p.m.	11.00 a.m. 7.50 p.m.	5.20 a.m. 9.15 a.m.	5.20 a.m. 9.15 a.m.	9.15 a.m. 11.40 a.m.	9.15 a.m. 11.40 a.m.
Troy, <i>tel. l.</i>	Trelawny	79	9.30 a.m. <i>a</i>	9.30 a.m. <i>a</i>	4.00 p.m.	4.00 p.m.	9.00 a.m.	9.00 a.m.	3.20 p.m.	3.20 p.m.
ULSTER SPRING, <i>tel.</i>	do	92	9.30 a.m. <i>a</i>	9.30 a.m. <i>a</i>	5.20 p.m.	5.20 p.m.	7.40 a.m.	7.40 a.m.	3.20 p.m.	3.20 p.m.
		100	1.00 p.m. <i>b</i>	1.00 p.m. <i>b</i>	9.20 a.m.	9.20 a.m.	2.40 p.m.	2.40 p.m.	9.15 a.m.	9.15 a.m.
Union Hill, <i>l.</i>	St. Mary	86	1.00 p.m. <i>b</i>	1.00 p.m. <i>b</i>	9.10 a.m.	9.10 a.m.	5.35 a.m.	5.35 a.m.	11.40 a.m.	11.40 a.m.
Victoria Town, <i>l.</i>	Manchester	54	6.30 a.m.	6.30 a.m.	3.55 p.m.	3.55 p.m.	9.00 a.m.	9.00 a.m.	9.15 a.m.	9.15 a.m.
Waitabit, <i>l.</i>	Trelawny	109	9.30 a.m. <i>a</i>	9.30 a.m. <i>a</i>	7.00 p.m.	7.00 p.m.	6.30 a.m.	6.30 a.m.	3.20 p.m.	3.20 p.m.



Wakefield, tel.	Trelawny	105	1.00 p.m. b	1.00 p.m. b	9.20 a.m.	9.20 a.m.	1.45 p.m.	1.45 p.m.	9.15 a.m.	9.15 a.m.
Walderston, tel.	Manchester	58	9.30 a.m. a	9.30 a.m. a	2.50 p.m.	2.50 p.m.	10.25 a.m.	10.25 a.m.	3.20 p.m.	3.20 p.m.
Walker's Wood, l.	St. Ann	46	1.00 p.m. b	1.00 p.m. b	7.00 a.m.	7.00 a.m.	3.20 p.m.	3.20 p.m.	9.15 a.m.	9.15 a.m.
Warsop, tel. l.	Trelawny	82	9.30 a.m. a	9.30 a.m. a	4.20 p.m.	4.20 p.m.	8.40 a.m.	8.40 a.m.	3.20 p.m.	3.20 p.m.
Watermount, tel. l.	St. Catherine	27	6.30 a.m.	6.30 a.m. c	1.45 p.m.	1.45 p.m.	2.00 p.m.	2.00 p.m.	9.15 a.m.	9.15 a.m.
Watson's Hill, l.	Manchester	72	9.30 a.m. a	9.30 a.m. a	5.50 p.m.	5.50 p.m.	7.35 a.m.	7.35 a.m.	3.20 p.m.	3.20 p.m.
Watt Town, l. tel.	St. Ann	94	1.00 p.m. b	1.00 p.m. b	7.30 a.m.	7.30 a.m.	2.40 p.m.	2.40 p.m.	9.15 a.m.	9.15 a.m.
WHITE HOUSE, tel.	Westmoreland	110	9.30 a.m. a	3.15 p.m. c	7.00 a.m.	9.00 a.m.	3.40 p.m.	3.00 p.m.	3.20 p.m.	9.15 a.m.
Whitfield Pen	St. Andrew	3		Three times	a day.					
WILLIAMSFIELD,	Manchester	53	6.30 a.m.	6.30 a.m.	10.45 a.m.	10.45 a.m.	5.50 a.m.	5.50 a.m.	9.15 a.m.	9.15 a.m.
			9.30 a.m. a	9.30 a.m.	1.45 p.m.	1.45 p.m.	11.40 a.m.	11.40 a.m.	3.20 p.m.	3.20 p.m.
			3.15 p.m. c	3.15 p.m. c	7.15 p.m.	7.15 p.m.	2.00 p.m.	2.00 p.m.	6.05 p.m.	6.05 p.m.
Windsor Castle	Portland	72½	1.00 p.m. b	1.00 p.m. b	5.35 p.m.	5.35 p.m.	8.00 a.m.	8.00 a.m.	11.40 a.m.	11.40 a.m.
Windward Road tel.	Kingston	15	Three times	daily.						
Woodford, l.	St. Andrew	51	3.15 p.m. c	3.15 p.m. c	8.30 a.m.	8.30 a.m.	3.00 p.m.	3.00 p.m.	8.15 a.m.	8.15 a.m.
Woodhall, l.	Clarendon	19	6.30 a.m.	6.30 a.m.	1.30 p.m.	1.30 p.m.	4.30 p.m.	4.30 p.m.	9.15 a.m.	9.15 a.m.
YALLAHS, l.	St. Thomas	19	1.00 p.m. b	1.00 p.m. b	3.35 p.m.	3.35 p.m.	6.55 a.m.	6.55 a.m.	8.15 a.m.	8.15 a.m.

### SUMMARY.

#### OUT-GOING.

Mails close as under:

1. For first trains to Kendal and Ewarton, daily at 6.30 a.m.
2. For *through* train to Montego Bay, daily at 9.30 a.m.
3. For *through* train to Port Antonio, daily at 1.00 p.m.
4. For *Windward*, East via Morant Bay, daily at 1.00 p.m.
5. For the *Northside*, daily at 1.00 p.m.
6. For the *Southside*, daily at 9.30 a.m. For the *Southside*, on Tues., Thurs., and Saturdays at 3.15 p.m.
7. For Port Royal, Gordon Town, &c., daily at 3.15 p.m.

#### IN-COMING.

Mails are received as under:

1. From Gordon Town, &c., daily at 8.50 a.m.
2. From Port Royal, daily at 11.45 a.m.
3. From *Windward*, East via Morant Bay, daily at 8.15 a.m.
4. By train from Port Antonio, daily at 11.40 a.m.
5. By train from Kendal daily at 9.15 a.m.
6. By train from Montego Bay, daily at 3.20 p.m.
7. From *Northside*, daily at 9.15 a.m.
8. From *Southside*, daily at 3.20 p.m.
9. From *Southside*, on Tues., Thurs. and Sat. at 9.15 a.m.



## MOTOR MAIL AND PASSENGER SERVICES.

A motor mail and passenger service is maintained between the following places: Kingston and Port Antonio, via Morant Bay; Ewarton and Montego Bay; Montego Bay and Lucea, Balaclava and Malvern, Balaclava and Ulster Spring, Maggotty and Black River, Montpelier and Savanna-la-Mar, Williamsfield and Savanna-la-Mar, Williamsfield and Cross Keys, Linstead and Gayle, Richmond and St. Ann's Bay, Shooter's Hill and Brown's Town, and May Pen and Race Course. The time of arrival and departure of the mail coaches may be ascertained by referring to the preceding Table.

The rates of passenger fares average 4d. to 5d. per mile.

## OVERSEA MAIL COMMUNICATION.

I. UNITED KINGDOM—Letter mail (1) to and from the United Kingdom is conveyed by every available opportunity via the United States, and by the Elders and Fyffes and Jamaica Direct Line of steamers via Liverpool, Bristol, or Plymouth. The Department endeavours to forward mail for the United Kingdom by the most expeditious route in each case. Parcel post mail is conveyed only by the direct steamers.

II. UNITED STATES OF AMERICA—Mails (both letter and parcel) to and from the United States of America are conveyed by the steamers of the United Fruit Co., Atlantic Fruit Co., and DiGiorgio Fruit Corporation, the most expeditious opportunity being utilised as far as possible.

III. CANADA—Letter mail to and from the Dominion of Canada is sent and received by each U.S. mail. Parcel post mail is, however, conveyed only by the steamers of the Pickford and Black Line trading between Halifax, N.S. and Jamaica, and the Canadian National Steamships trading between Montreal and Halifax and Jamaica about once every week.

IV. CENTRAL AMERICA—Mail communication with these countries (*except East Coast of Nicaragua and Venezuela*) is maintained by the steamers of the United Fruit Co., Elders and Fyffes Ltd., and Canadian National Steamships, via Cristobal, Barranquilla, Limon, Belize, Cortez, Barrios, etc. For further information regarding parcel-post mail for these places, see page 121.

V. WEST INDIA ISLANDS AND BRITISH GUIANA—Letter mail to and from the West India Islands is exchanged regularly by way of New York. Mails are also exchanged with Trinidad and Barbados by way of Cristobal and by Elders and Fyffe's steamers. Parcel-post mail is exchanged mainly by the Elders and Fyffe's steamers (see p. 37.) The Horn Line and the Royal Dutch West India Mail Company maintain a direct service to Haiti.

The Canadian National Steamships maintain a direct service between Jamaica, Bermuda, and the Bahamas.

VI. CAYMAN ISLANDS A three-weekly service is maintained by R.M.S. "Cimboco" and an irregular service by schooners.

VII. TURKS ISLANDS—An irregular mail service to and from these Islands is maintained by means of schooners and sloops. Letter mail is also exchanged via New York.

VIII. CUBA—Mails are conveyed regularly by the United Fruit and Webster Shipping Co's steamers. There is no direct parcel-post exchange with Cuba.

## AVERAGE FREQUENCY OF SERVICES.

Country.	Receivals.	Dispatches.
U.S. of America	Three every week (2)	Five every fortnight
Canada	Two every week	do
United Kingdom	Three every week (direct and via N.Y.)	Three every week (direct and via N.Y.)
Canal Zone, Panama, Colombia and Costa Rica	Three every fortnight	One every week.
Guatemala and Honduras	Two every fortnight	Two every fortnight
Cuba	One every week	One every fortnight

(1) The term "letter mail" refers to letters and post cards, and packages of printed and commercial papers and samples.

(2) Two from New York and one from New Orleans.



## REGISTRATION (OVERSEAS.)

If it is proved to his satisfaction that a *letter or packet duly admitted to Registration* has been *entirely lost whilst in his custody* the Postmaster undertakes to *pay an indemnity of 50 francs*, except in cases beyond control (*e.g.*, tempest, shipwreck, earthquake and war.) *No compensation*, however, is payable *except in the case of the loss of the entire letter or packet*; and *no claim will be admitted if made more than a year after the letter or packet was posted.*

The Postal Administrations of all countries and colonies included in the Postal Union give the same undertaking in respect of registered letters or packets lost whilst in their custody.

If it is desired to obtain *compensation* in the case of *abstraction of contents* of a letter, or to provide for a higher maximum than 50 francs, recourse must be had to the *Insurance System*. See "Insurance" below.

## INSURANCE—OVERSEAS (For Letters only.)

Letters tendered for insurance will be accepted by the Post Office on payment of the fee and subject to the conditions stated below:—

Fee—5d. for every £12 of value *in addition to the postage and registration fee.*

A LETTER is the only article of mail matter which will be accepted for insurance; post cards, printed papers, commercial papers or sample packets will not be accepted.

Letters containing coin, anything made of gold or silver, precious stones, jewellery, or any article liable to customs duty in the country of destination cannot be sent by insured letter-post. Objects of value which cannot be sent in insured letters may generally be sent in insured *parcels*.

The insurance system is specially applicable to letters which contain bank notes, coupons, securities, bonds and other documents of the kind.

## PARCEL POST.

A parcel post exchange exists between Jamaica and most foreign countries.

The parcel mail for the United Kingdom and Irish Free State, United States of America, Bermuda, Canal Zone, Canada, Costa Rica, Panama, British Honduras and Turks, Cayman and Bahama Islands is forwarded by each available *direct* opportunity. That for the majority of the W. I. Islands and British Guiana is sent and received via Trinidad and Barbados.

The parcel mail for Chili, Ecuador, Nicaragua, Peru and Venezuela is forwarded via Panama; and for El Salvador, Guatemala, and (Republic of) Honduras via British Honduras.

Parcels for the majority of other countries are forwarded via the United Kingdom.

*Foreign (except to U. S.) and Colonial parcels cannot be registered*, but they may be *insured* to certain countries.

For rates of postage, dimensions, weight, conditions of insurance, etc., etc., consult Post Office Guide, sold separately.

For information concerning the rates of duty levied on parcels received from abroad, reference should be made to the "Schedule of Import Duties," (vide "Revenue Department") in earlier pages of this Handbook.

A Customs clearance fee of 6d. will be collected on every parcel-post parcel (whether it contains dutiable matter or not), and on every package (other than parcel-post) which on examination is found to contain dutiable matter.

## TELEGRAPHS.

THE Government Telegraphs are under the control of the Postmaster for Jamaica.

The charge for telegrams throughout Jamaica is ninepence for any number of words up to twelve, and a half-penny for every additional word. The address and signature are both counted. The charge is paid in postage stamps affixed to the message.

If the addressee reside within one mile of the terminal office the telegram is delivered by messenger without any additional charge; but if beyond that limit the following portage fee must be prepaid:—

a. At the rate of 6d. per mile (one way) counting from boundary of free delivery.

The above rates are maintained whenever practicable. If messengers cannot be obtained at these rates the Postmistress is authorised to make the most reasonable arrangement possible.

The charges for the transmission and for portage of telegrams must be pre-paid.

Persons resident at a place to which the island telegraph line has not been extended can benefit by its use on the following conditions:—

a. If the words "By Post" with the name of a telegraph station be written on a message it will be *telegraphed* to such station and forwarded from thence to its postal address by first post.



ESTABLISHMENT OF THE POST OFFICE DEPARTMENT

Office.	Name of Holder.	Salary or other Emolument.			Date of First Appointment to Public Service.
		£	s.	d.	
Postmaster for Jamaica	R. H. Fletcher	850	0	0	1st Feb., '90
Asst. Ditto	H. C. Savage	650	0	0	3rd June, '05
Chief Clerk & Accountant	S. W. Royes	500	0	0	1st March, '93
First Class Clerk	W. A. Campbell	425	0	0	20th June, '03
Ditto	E. L. Morris	350	0	0	24th June, '11
Ditto	G. F. White	325	0	0	28th July, '13
Ditto	M. V. Hearne	325	0	0	1st May, '12
Ditto	E. J. Andrews	325	0	0	3rd July, '11
Second Class Clerk	L. Lewis	295	0	0	28th July, '14
Ditto	V. H. Murphy	295	0	0	4th June, '19
Ditto	E. M. Morales	295	0	0	3rd May, '21
Ditto	B. C. Marsh	295	0	0	1st July, '18
Ditto	James Richardson	295	0	0	24th April, '11
Ditto	E. Scivright	220	0	0	14th Aug., '20
Ditto	A. V. Nash	200	0	0	2nd Feb., '20
Ditto	G. S. Grannum	200	0	0	19th Oct., '20
Assistant	A. H. Durant	160	0	0	23rd Apr., '23
Ditto	M. F. Guilfoyle	160	0	0	25th Feb., '24
Ditto	D. G. Priestley	160	0	0	12th July, '24
Ditto	S. E. Fyfe	160	0	0	18th Aug., '24
Ditto	R. E. A. Mais	160	0	0	8th Oct., '24
Ditto	R. W. Grant	160	0	0	15th July '25
Ditto	C. S. Irving	145	0	0	11th July '27
Ditto	R. S. Nelson	145	0	0	27th June, '27
Ditto	R. E. Weston	145	0	0	11th April, '27
Ditto	H. A. Fairweather	145	0	0	5th Sept., '27
Ditto	S. A. Dudley	145	0	0	14th Mar., '27
Ditto	A. R. Abrahams	130	0	0	17th Aug., '27
Ditto	I. F. Escoffery	130	0	0	20th Aug., '28
Ditto	E. B. Laing	115	0	0	2nd Aug., '27
Ditto	A. B. D. Lumsden	115	0	0	13th Nov., '29
Ditto	H. H. Phillips	115	0	0	9th Dec. '29
Ditto	H. B. Young	130	0	0	7th Jan., '29
Ditto	E. I. F. Gaynair	115	0	0	1st Dec., '30
Electrical Inspector	G. A. Rock	650	0	0	11th Dec., '04
Superintendent of Telegraphs	T. J. Guilfoyle	550	0	0	16th Sept., '17
Assistant Supt. do	S. P. Bather	425	0	0	17th Nov., '19

In addition to the above there is an auxiliary staff of lady clerks and a subordinate staff of sorters, letter carriers and telegraph messengers.



## AIR MAIL SERVICES.

**SOUTHBOUND:** A mail-carrying air plane flies from Miami, U.S.A. every Tuesday and Friday at 9.30 a.m., arrives at Kingston on the same days at 5 p.m., and flies to Cristobal on Wednesdays and Saturdays at 9 a.m., arriving on the same days at 2.45 p.m.

**NORTHBOUND:** A plane flies from Cristobal every Sunday and Wednesday at 8 a.m., arrives at Kingston on the same days at 3.45 p.m., and flies to Miami on Mondays and Thursdays at 8.30 a.m., arriving on the same days at 3.30 p.m.

Planes fly daily from Miami to all points in the United States. Letters for New York, N.Y. are due to reach that city on Tuesday and Friday mornings at 9.30 o'clock.

Planes fly daily (except Sundays) from Miami for Canada, Cuba (Havana) and Nassau.

The following connexions are scheduled for Mexico, Central and South America and the West India Islands.

(a) Planes fly from Cristobal at 6 a.m. on Thursdays for Colombia (East Coast), Venezuela, Curacao and Trinidad; at 6 a.m. on Thursdays and Sundays for Colombia (West Coast), Ecuador, Peru, Chile, Argentina, and Uruguay; and at 6 a.m. on Sundays and Wednesdays for David, R.P., Costa Rica, Nicaragua, Honduras (Republic, South Coast and Tegucigalpa), El Salvador, Guatemala and Mexico.

(b) Planes fly from Miami at 3 p.m. on Mondays and Thursdays for British Honduras, and Honduras (Republic North Coast).\*

(c) Planes fly from Miami at 6 a.m. on Mondays, Wednesdays and Fridays for Haiti, Dominicana (Republic), and Porto Rico. From Porto Rico on Tuesdays (only) at 8.30 a.m. for Virgin Islands (U.S.A.), Antigua, St. Lucia, Trinidad, British and Dutch Guiana, and Brazil.

\*

\*

\*

\*

**AIR MAIL FOR EUROPE AND AFRICA:**—Letters mailed in time for dispatch on the Thursday plane should reach New York in time to connect with the fast steamers sailing on Saturdays, affording a 8½ to 12-day service to the United Kingdom and the Continent depending upon the speed of the vessel by which forwarded. The same service is afforded letters forwarded by the Monday plane which connects with the fast steamers sailing from New York on Wednesdays.

Letters should be marked in the upper left-hand corner of the envelopes or covers, "Par Avion (by air mail) from London or Cherbourg."

Letters for transmission by air to Delhi should also be marked at the top left-hand corner of the envelope "By air to Delhi."

All letters for this service will be dispatched to New York for onward transmission from that exchange post office.

**AIR MAIL FOR AUSTRALASIA, ETC:**—Letters for Australasia, China, Japan, etc. are forwarded by air to U.S. Pacific exchange post office for transmission by steamer to destination.

For rates see Post Office Guide sold separately.

## MEDICAL SERVICE. \*

**Districts**—There are 44 Medical Districts at present under the charge of 44 District Medical Officers, and the affairs of the Public Hospital have been entrusted to the direction of the Superintending Medical Officer, who has under him at that Institution a Senior Medical Officer, assisted by 5 Resident Medical Officers, and a Supernumerary who however, is liable to be sent away at any time to fill a temporary or permanent vacancy in any district. During the year 1886-87 the Lunatic Asylum was placed under the direction of the Superintending Medical Officer. A Medical Superintendent and 4 Assistant Medical Officers are employed and reside at the institution.

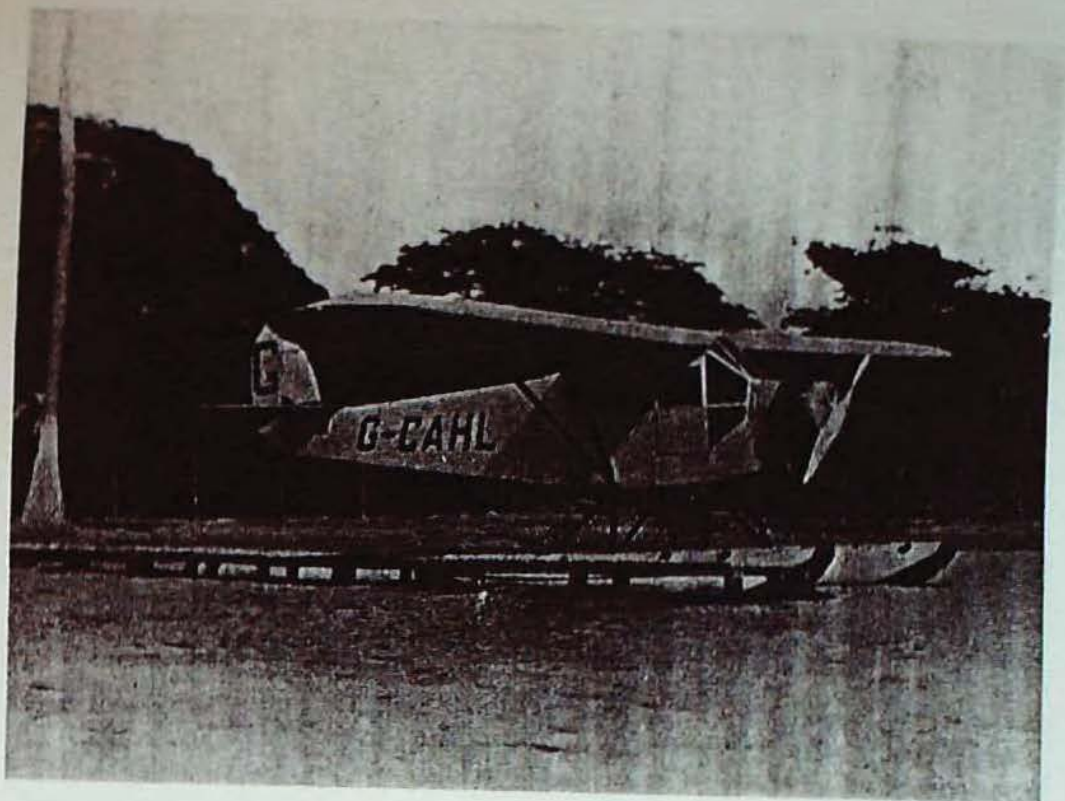
**Cost of Medical Service.**—The actual expenditure for the Medical Service of the colony for the year ending 31st December, 1930, was £130,921 1s. 1d. The receipts were £3,383 3s. 3d., and the actual cost after deduction of the receipts was £127,537 17s. 10d.

**Leave and Pensions.**—As an outcome of the Report of the Royal Commissioners instructions were issued that District Medical Officers are not to be allowed to engage in any business unconnected with their profession; or to occupy land except in cases where the occupation of the land necessarily accompanies that of the house.

\* Historical details of the development of the Medical Department will be found in earlier issues of the Handbook prior to 1927.

Full information concerning the duties of District Medical Officers, Medical attendance on the Poor, etc., can be obtained from the Island Medical Office, North Street, Kingston.





THE PLANE THAT CARRIED THE FIRST AIR MAIL  
FROM JAMAICA



KINGSTON FROM THE AIR