



THE
HANDBOOK OF JAMAICA

FOR

1 9 0 2,

COMPRISING

Historical, Statistical and General Information
CONCERNING THE ISLAND.

TWENTY-SECOND YEAR OF PUBLICATION.

COMPILED FROM OFFICIAL AND OTHER RELIABLE RECORDS,*

BY

T. L. ROXBURGH

AND

JOS. C. FORD

(OF THE JAMAICA CIVIL SERVICE).

* This Handbook, though in part compiled from official records, is not an official publication.

LONDON

EDWARD STANFORD, 26 AND 27 COCKSPUR STREET. S. W.

JAMAICA

GOVERNMENT PRINTING OFFICE, 79 DUKE STREET KINGSTON.

1902.

To Mr. Charles Rockwell
Larman.

from L. O. Ford
Preface to the Edition of 1902. May, 1903

[Feb. 2, 1903.]

THE Editors in issuing the Handbook of Jamaica for 1902 gratefully acknowledge the valuable assistance rendered by the Officials of Societies and Institutions in the Island, and by Officers of the Civil Service in the collection and correction of the varied information now brought up to date in this work.

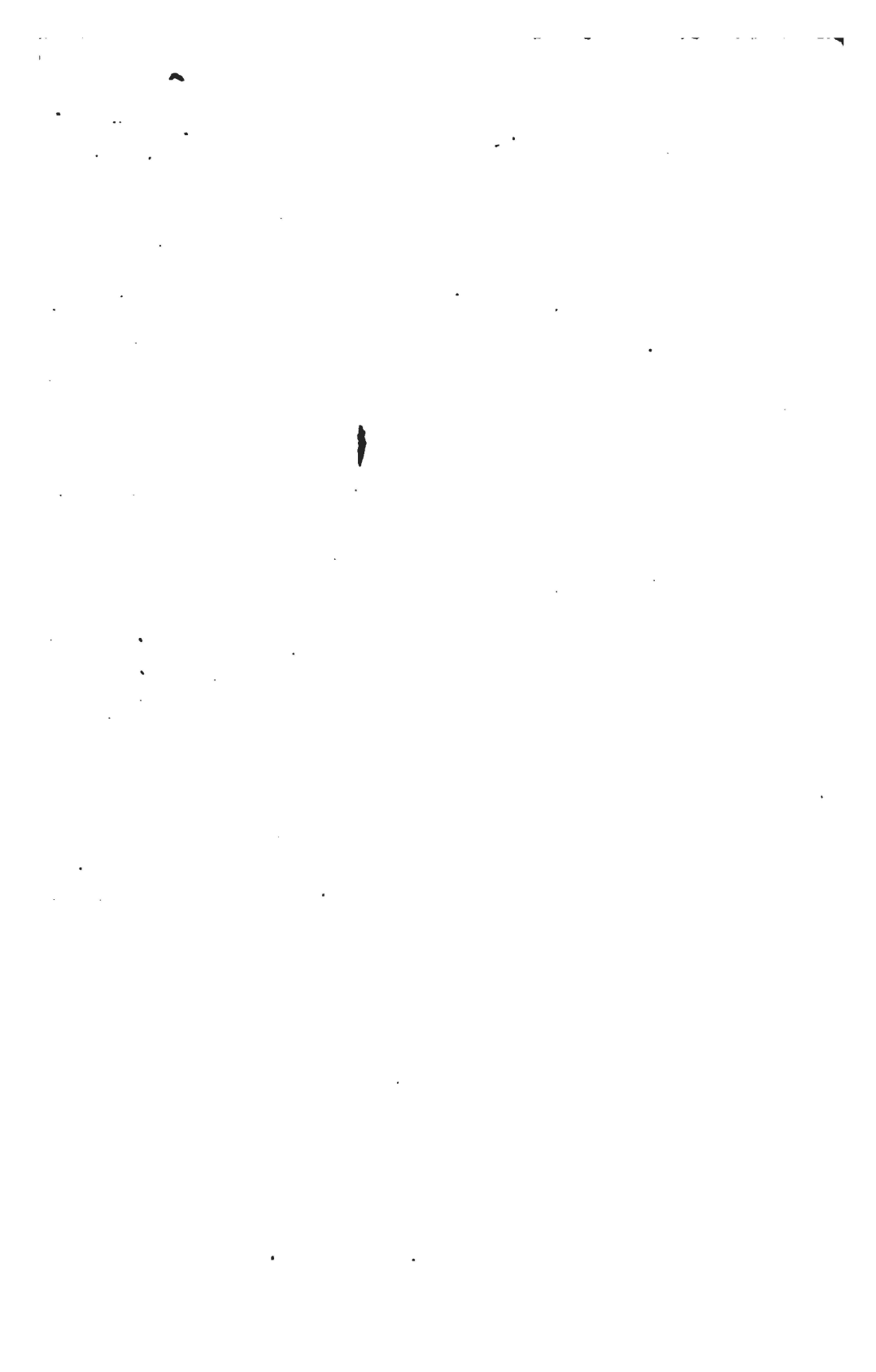
Owing to the continual tendency of the Book to increase in volume, we have, in the present edition, considerably shortened many of the articles, by omitting much that is merely historical, referring the reader to previous issues for this information.

Every effort has been made to eliminate errors and to supply omissions, but the Editors will gladly receive corrections of any errors that may be detected by readers and will welcome suggestions for increasing the usefulness and accuracy of the volume.

T. L. ROXBURGH.

JOS. C. FORD.

Kingston, 15th Feby., 1902.



	Page.		Page.
PART VIII., contd.		PART XI., contd.	
Lady Mico's Charity . . .	299	Cattle Trespass Act . . .	382
Titchfield Trust School . . .	300	Pound Law . . .	382
Munro and Dickenson's Free School . . .	301	Dividing Fences Law . . .	384
Merrick's Charity . . .	302	Cattle Quarantine . . .	384
Rusea's Free School . . .	303		
Beckford and Smith's School . . .	303	PART XII.	
Vere and Manchester Free Schools . . .	304	MARITIME—	
Ludford's Bequest . . .	306	Steam Communication . . .	385
Manning's Free School . . .	306	Royal Mail Steam Packet Company . . .	385
Jamaica Scholarships . . .	307	Jamaica Coastwise Service . . .	386
Jamaica High School . . .	309	Imperial Direct West India Steam-ship Co. . .	387
University College . . .	312	Leyland Line of steamers (West India and Pacific Branch) . . .	387
Moravian Female Training School . . .	312	Hamburg-American Line . . .	388
Calabar Institution or Jamaica Baptist College . . .	313	United Fruit Company . . .	389
Jamaica Church Theological College . . .	313	Kerr & Co.'s Steamers . . .	389
St. George's College . . .	314	Halifax and West India Steam-ship Co. . .	389
Convent of Im. Con. (Franciscan) . . .	314	Cuban Steamship Co., Limited . . .	390
Convent of Mercy, St. Mary's . . .	315	Underwriters Agents in Jamaica . . .	390
Kingston Collegiate School . . .	315	Marine Board . . .	390
Church of England Grammar School . . .	316	Harbours and Harbour Masters . . .	393
St. Claver's Orphanage, Spanish Town . . .	316	Receivers of Wreck . . .	394
Belmont Orphanage and Industrial School . . .	317	Light Houses . . .	395
Hope Industrial School . . .	317		
Montego Bay Secondary School . . .	317	PART XIII.	
Church of England Deaconess Home . . .	318	ADMINISTRATIVE BODIES, &c.—	
		Rio Cobre Irrigation Canal . . .	397
PART IX.		Kingston General Commissioners . . .	399
ECCLIASTICAL AND RELIGIOUS—		Kingston Gas Works . . .	400
Church of England in Jamaica . . .	319	Kingston and Liguanea Water Works . . .	401
Church of Scotland . . .	325	Markets . . .	404
Roman Catholic Church . . .	325	Kingston Slaughter House . . .	406
Baptist Mission . . .	326	Kingston Improvements . . .	407
Presbyterian Church . . .	328	Spanish Town Water Works . . .	408
Congregational Union . . .	330	Old Harbour Water Works . . .	408
West Indian Methodist Connexion in Jamaica . . .	330	Linstead Water Works . . .	409
United Methodist Free Churches . . .	331	Falmouth Water Works . . .	410
Christian Church . . .	333	General Water Supply . . .	411
Moravian Church . . .	333	Milk River Bath . . .	412
Jamaica Independent Social Baptist Union . . .	334	Bath of St. Thomas-the-Apostle . . .	414
Jewish Congregations . . .	335	May Pen Cemetery . . .	415
		Civil Service Guarantee Association . . .	417
PART X.		Security of Public Officers . . .	419
PAROCHIAL INFORMATION—			
The Parishes . . .	336	PART XIV.	
Parochial Boards . . .	360	BENEVOLENT AND TRUST FUNDS AND INSTITUTIONS—	
Acreage of Cultivated Lands . . .	364	Civil Service Widows and Orphans' Fund . . .	420
Acreage in Wood and Ruinate . . .	364	Rectors' Fund . . .	421
		Island Curates' Fund . . .	422
PART XI.		Widows and Orphans of the Dis-established Church . . .	422
AGRICULTURAL AND PASTORAL—		Pension Fund of Disestablished Church . . .	423
Imperial Agricultural Department . . .	365	Fletcher's Trust, Kingston . . .	423
Public Gardens and Plantations Cultivation . . .	365	Sarah Morris' Trust, Kingston . . .	424
Classification of Landholders . . .	369	D'Espinose's Bequest, Kingston . . .	424
Sugar Estates in Cultivation . . .	370	Wood's Bequest, Kingston . . .	425
Coffee Cultivation in Jamaica . . .	375	Gregory's Charity, Spanish Town . . .	425
Banana and Cocoa Cultivation . . .	376	Fletcher's Charity, Spanish Town . . .	425
Jamaica Agricultural Society . . .	380	Gray's Charity, St. Mary . . .	425
		Guthrie-Davidson's Bequest, St. James . . .	426

	Page.		Page.
PART XIV., <i>contd.</i>		PART XVI., <i>contd.</i>	
Dorcas Society, St. Michael's Church, Kingston . . .	426	Loyal Order of Ancient Shepherds . . .	452
Dorcas Society, St. George's Church, Kingston . . .	427	Good Templary . . .	453
Hebrew Benevolent Society, Kingston . . .	427	Young Men's Christian Association . . .	454
Night Refuge and Parochial Dispensary, Kingston . . .	427	Jamaica Club . . .	454
Jamaica Masonic Benevolence . . .	428	St. Andrew Club . . .	455
City Dispensary, Kingston . . .	429	Royal Jamaica Yacht Club . . .	456
Women's Self-Help Society . . .	430	West Indian Club . . .	457
Kingston Sailors' Home . . .	430	West India 'Committee' . . .	458
Kingston and St. Andrew Union Poor House . . .	431	Jamaica Society of Agriculture and Commerce . . .	458
Discharged Prisoners Aid Society . . .	432	Kingston and St. Andrew Horticultural Society . . .	460
PART XV.		Jamaica Union of Teachers . . .	461
PUBLIC COMPANIES—		Jamaica Christian Endeavour Union . . .	461
Kingston Benefit Building Society . . .	433	Cricket in Jamaica . . .	461
Permanent Building Society . . .	434	Medical Association . . .	463
Victoria Mutual Building Society . . .	434	Medical Council of Jamaica . . .	463
St. Thomas Mutual Benefit Building Society . . .	435	PART XVII.	
St. Ann Benefit Building Society . . .	435	MEANS OF COMMUNICATION—	
Westmoreland Building Society . . .	435	Travelling in Jamaica . . .	465
Trelawny Benefit Building Society . . .	436	Railway . . .	466
St. James Benefit Building Society . . .	436	Mail Coaches . . .	476
St. Elizabeth Benefit Building Society . . .	437	Livery Stables . . .	480
St. Catherine Building Society . . .	438	Lodging-Houses, Taverns, &c.. . .	484
West India Electric Company . . .	438	Tram Cars (see West India Electric Company) . . .	458, 486
People's Discount Company . . .	439	Omnibuses or Cabs . . .	486
Hotels Company in Jamaica . . .	439	PART XVIII.	
St. Catherine Hotels Company . . .	439	MILITARY AND NAVAL—	
Moneague Hotels Company . . .	440	Military on the Station . . .	488
Kingston Ice-Making Company . . .	440	Navy on the Station . . .	490
Jamaica Electric Light and Power Company . . .	441	Militia . . .	493
The Jamaica Telephone Company . . .	441	PART XIX.	
Cable Communication . . .	441	MISCELLANEOUS INFORMATION—	
West India and Panama Telegraph Company . . .	442	Naturalization of Aliens . . .	494
The Direct West India Cable Company . . .	443	Passports . . .	494
Fire Insurance Companies . . .	443	Letters Patent for Inventions . . .	496
Jamaica Co-operative . . .	444	Land Surveyors . . .	497
Jamaica Marine Insurance Company . . .	444	Petroleum . . .	499
Jamaica Mutual Life Assurance Society . . .	445	Calcium Carbide . . .	500
Life Assurance Offices . . .	446	Gunpowder and Explosives . . .	501
PART XVI.		Birds and Fish Protection . . .	501
CLUBS, SOCIETIES, &c.—		Blue Mountain Peak . . .	503
Freemasonry . . .	447	Election Information . . .	503
Ancient Order of Forresters . . .	450	Weights and Measures . . .	506
Manchester Unity Order of Oddfellows . . .	450	The Metric System . . .	507
Grand United Order of Oddfellows . . .	451	Table of number of days from any day in one month to same day in any other month . . .	508
Good Samaritans and Daughters of Samaria . . .	452	Cattle Slaughtered . . .	508
		Newspapers . . .	509
		APPENDIX.	
		DEPENDENCIES OF JAMAICA—	
		Turks and Caicos Islands . . .	510
		Cayman Islands . . .	513
		Morant and Pedro Cays . . .	516
		Events of 1901 . . .	518
		Addenda . . .	523

POST OFFICE DEPARTMENT.

OVERSEA MAILS.

THE UNITED KINGDOM AND EUROPE.

[*Historical details of the development of the Post Office will be found in previous issues of the Handbook*]

The Royal Mail Steam Ship Co.'s vessels convey mails, *fortnightly*, between Jamaica and the United Kingdom, via Barbados and Jacmel:—

To Jamaica.—Leave Southampton every alternate Wednesday at 6 p.m. Arrive Jamaica every alternate Friday at 8 a.m.

From Jamaica.—Leave Jamaica every alternate Tuesday at 2 p.m. Arrive Plymouth every alternate Wednesday at 9 p.m.

The mails for Great Britain by the Royal Mail Steam Packet Company's steamers are made up at the General Post Office, Kingston, at the following hours:—

Registered letters, 9 a.m.; newspapers and Book packets, 10 a.m.; ordinary letters 11.30 a.m.

Late letters may be posted at the General Post Office, on payment of a fee of three-pence, up to 12.30 p.m. From that time until the steamer leaves the wharf a Post Office Clerk is stationed on board the steamer to receive late letters. The late fee of sixpence in each case must be pre-paid by means of stamps.

The Imperial Direct West India Mail Co. (Elder Dempster & Co.) leave Bristol every alternate Saturday and are due at Kingston every alternate Friday. The return steamers leave Kingston every alternate Thursday and are due at Bristol every alternate Wednesday. The mails for Great Britain, &c., by the Direct Line close in Kingston as under:—

Registered letters at 11 a.m.; newspapers and book-packets at 12 m.; ordinary letters at 1.30 p.m.; *late letters*, at the G. P. O. at 2.30 p.m. (3d. extra); on board the steamer, up to 3.30 p.m. (6d. extra).

The Leyland Line—Liverpool to Jamaica every month.

The Cuban S. S. Co.—London to Kingston monthly.

THE UNITED STATES.

The Hamburg American Line (Atlas Line Service to New York)—fortnightly Kingston to New York every alternate Thursday; weekly, New York to Kingston every Saturday.

The United Fruit Co.—Boston every Wednesday; New York, Philadelphia and Newport News: Kingston to U. S. every Tuesday.

J. E. Kerr & Co.'s Line of Steamers leave New York every Friday, and Jamaica (from Port Maria) every Tuesday for New York.

HALIFAX, BERMUDA, TURKS ISLAND.

The Halifax and West India S. S. Co.—monthly.

EXTERNAL POSTAL RATES.

PENNY POSTAGE.

The following is a list of British Possessions and Protectorates, in addition to the United Kingdom, to which letters may be transmitted at the rate of *one penny* per half ounce:—

Aden Ascension
Bahamas, Barbados, Bermudas, British
Central Africa, British East Africa,
British Guiana, British Honduras,
British North Borneo.
Canada, Cape of Good Hope, Ceylon.
Cyprus
Falkland Islands Fiji
Gambia, Gibraltar, Gold Coast,
Hong Kong
India Johore
Labuan, Lagos, Leeward Islands, namely:
Antigua, St. Kitts, Nevis, Dominica

Montserrat and the Virgin Islands, Malay
States (protected), namely: Perak, Selangor
Negri-Sembilan and Pahang
Malta Mauritius
Natal, Newfoundland, New Zealand, Niger
Coast Protectorate, Niger Territory
Orange River Colony
St. Helena, Sarawak, Seychelles, Sierra Leone,
Straits Settlements
Tobago, Transvaal, Trinidad, Turks Islands
Uganda
Windward Islands, namely:
Grenada, St. Lucia, St. Vincent
Zanzibar

**POSTAL UNION.
REGULATIONS.**

The rates of postage to places in the Universal Postal Union are as under:—

For a Letter per $\frac{1}{2}$ ounce.	For Post Cards.		For News- papers or other Printed Papers per 2 ounces.	For Commercial Papers per 2 ounces.	For Patterns per 2 ounces.	†Registra- tion Fee.
	Single.	Reply paid.				
2 $\frac{1}{2}$ d.*	1d.	2d.	$\frac{1}{2}$ d.	$\frac{1}{2}$ d. lowest charge 2 $\frac{1}{2}$ d.	$\frac{1}{2}$ d. lowest charge 1d.	2d.

REGULATIONS.

Printed papers and Commercial papers may be sent to any country of the Postal Union under the Book Post regulation.

It is forbidden to send through the Post to a country of the Postal Union—

Any article of a nature likely to stain or injure the correspondence.

In addition, all kinds of printed, engraved or lithographed matter, legal and commercial documents and music in manuscript may be sent as a book-packet. Proofs of printing or of music may bear correction with a pen, and may have manuscript annexed to them. Circulars, &c., may bear the signature of the sender, his trade or profession, place of residence and a date. A book may have a dedication or complimentary inscription in manuscript; and printed and lithographed stock or share lists, prices-current, and market reports may have the prices added in writing.

Commercial papers and printed papers must be sent under band or in an open envelope, so as to admit of the contents being easily withdrawn for inspection, but if they present the form and consistency of an unfolded card they may be forwarded without a cover.

No packet of Printed matter or Commercial papers for transmission to countries of the Postal Union must exceed 18 inches in any direction, unless it be in the form of a roll in which case the limits of size will be 30 inches in length and 4 inches in diameter; and no such packet for other places abroad must exceed two feet in length or one foot in width or depth; the extreme limit of weight is 4lbs. for a single packet for countries in the Postal Union and 5lbs. for other countries.

Pattern and sample packets for places in the Postal Union must not exceed 1 foot in length, 8 inches in width, 4 inches in depth, unless it be in the form of a roll, in which case the limit of size will be 1 foot in length and 6 inches in diameter. The limit of weight is 8 ounces except when addressed to Argentine Republic, Austria, Belgium, Bolivia, Bulgaria, Congo Free State, Costa Rica, Dominican Republic, Ecuador, Egypt, France, Greece, Guatemala, Hawaii, Holland, Honduras Republic, Hungary, Italy, Japan, Liberia, Luxembourg, Mexico, Persia, Peru, Portugal, Roumania, Salvador, Serbia, Siam, Spain, Switzerland, Tunis, and the United States of America, and Venezuela, the limits of which are 1 foot in length, 8 inches in width, 4 inches in depth, and 12 ounces in weight. To Great Britain and any British colonies or possessions, or for any Non-union Countries, the limit of weight of such packets is 5lbs.

The term "printed papers" has reference to newspaper and periodical works, books stitched or bound, pamphlets, sheets of music, printed visiting cards, address cards, proofs of printing, with or without the manuscript relating thereto, engravings, photographs, drawings, plans, maps, catalogues, prospectuses, announcements and notices of various kinds, whether printed, engraved lithographed or autographed; in general, all impressions or copies obtained upon paper, parchment, and cardboard, by means of printing, lithography, autography or any other mechanical processes, to be recognized, *except* the copying press, and the type writer.

* Other than British possessions to which letters can be sent at 1d. per $\frac{1}{2}$ oz. (see Ante.)

† The sender of a registered article addressed to any Country in the Postal Union may obtain an acknowledgment of its receipt by the addressee on payment in advance of a fee of 2d. in addition to the registration fee.

Stamps for pre-payment, whether obliterated or not, as well as all printed articles containing the representative sign of a monetary value are excluded from the reduced postage applicable to "printed papers."

Patterns of merchandize can only be forwarded by the ordinary post under the following conditions:—

They must be placed in bags, boxes or open envelopes, in such a manner as to admit of easy inspection.

They must possess no saleable value, nor bear any manuscript beyond the name or social position of the sender, the address of the addressee, a manufacturer's or trade mark, number and prices.

Patterns of merchandize may also be forwarded by Parcel Post subject to the conditions stated hereafter.

LIST OF COUNTRIES, &C., COMPRISED IN THE UNIVERSAL POSTAL UNION.

- Argentine Republic, viz.:—Buenos Ayres, Santa Fe, Estre Rios, Orientes, Cordova La Rioja, Santiago del Estero, Tuenman, Catamarca, Salta and Jujiry, San Luis, Mendoza and San Juan and including Eastern part of Patagonia and Terra-del-Fuego.
- Ascension, Australia.
- Austro-Hungary, including Principality of Lichtenstein.
- Belgium, Bolivia, Bosnia. Brazil.
- British Central Africa, British Borneo.
- Bulgaria, Principality of.
- Cameroons.
- Canada, Dominion of, viz.: Ontario, Quebec, New Brunswick, Nova Scotia, British Columbia, Manitoba, Vancouver's Island, Prince Edward Island and Cape Breton Island.
- Cape Colony, (including Basutoland, British Bechuanaland, Pondoland, Griqualand East, and West, Namaqualand (Little), St. John's River Territory, Tanskei, Tembuland, Walwiah Bay).
- Chili, including Western parts of Patagonia and Terra-del-Fuego.
- Colombia, Republic of; Barranquilla, Bogota, Buenaventura, Carthagena, Colon, Panama, Porto Bello, Santa Martha, Savanilla, Congo, including Black Point, Majumba and Nyanza.
- Costa Rica, Cyprus.
- Denmark, including Iceland and the Faroe Islands.
- Danish Colonies of Greenland, St. Croix, St. John and St. Thomas.
- Dominican Republic (San Domingo).
- Ecuador.
- Egypt (including Nubia and Soudan).
- France, including Algeria, Principality of Monaco and the French Post Offices established at Tunis, Tangier (Morocco), and at Shanghai (China), Cambodia, Annam and Tonquin.
- French Colonies, viz.:—
- Martinique, Guadeloupe and Dependencies. French Guiana (Cayenne), Senegal and Dependencies, Ahgwey, Gaboon, Grand Bassam and Half Jack, (also Sette Cama and Assinee), Réunion, Comoro Islands, Mayotte and Dependencies, French establishments in Madagascar, viz. Ambosetra, Andevovante, Antananarivo, Diego-Suarez, Fenerive, Fiaranantsoa, Foulpointe, Ivondro, Maevatanana, Mahambo, Mahanoro, Mahela, Maintirano, Majunga, Mananjary, Morandava, Morotsaugana, Nossi-Vé, St. Mary, Tamatave, Vatomandry, Vohemar, New Caledonia and Dependencies, the French portion of the Low Archipelago and the French Establishments in India (Pondichery, Chander-nagar, Karikal, Mahé, and Yanaon) Annan, Cambodge Tonkin, and in Cochin China. French Establishments in Morocco, viz.:—Casablanca. El-Ksar-el-Kbir, Fex Laraiche, Mazagan, Mogador, Rabat, Saffi and Tangier.
- Germany:—
- German Colonies, viz.: Marshall Islands New Guinea (portion of) Samoa (Apia), Togo Territory, including Bageida, Little Popo, Lome, and Porto Seguro, and territory in South West Africa, viz., Grand Namaqua, the Damaras Country, and Southern portion of Ovambo, Bagamoyo and Dar-es-Salaam, Lindi and Tanga, in East Africa.
- Gibraltar, (including the British Post Office at Tangier, Tetuan Fex. Laraiche; Rabat; Cassablanca Saffi; Mazagan and Mogado.)
- Great Britain and Ireland.
- British Colonies (in addition to those separately mentioned) of Antigua, Bahamas, Barbados, Bermudas, British Guiana, British Honduras, British New Guinea, Ceylon, Dominica, Falkland Islands, Fiji Islands, Gambia, Gold Coast, Grenada and the Grenadines, Hong Kong, Labuan, Lagos, Mauritius and Dependencies (the Amirante Islands, the Seychelles and Rodrigues), Montserrat, Nevie, Newfoundland St. Kitts, St. Lucia, St. Vincent, Sierra Leone, Straits Settlements (Penang, Singapore and Malacca), Tobago, Tortola, Trinidad and Turks Island.
- British India, Hindostan and British Burmah, and the Indian Postal Establishments of Aden Muscat, Persian Gulf, Guadur and Mandalay.
- British East Africa.
- Greece, including Ionian Islands.
- Grey Town. Hawaii.
- Hayti.
- Guatemala. Herzegovina
- Honduras, Republic of (including Bay Islands).

LIST OF COUNTRIES, &c., COMPRISED IN THE UNIVERSAL POSTAL UNION, <i>continued</i> .	
Indian Post Offices on the Persian Gulf and in Turkish Arabia, viz.:— Bagdad, Basrah, Bahram, Bunderabbas Bushire, Jask, Surga, Mahommerah, Guadur, Muscat.	Niger Coast Protectorate, Norway. Orange River Colony. Paraguay, Patagonia. Persia, viâ Russia, and viâ Persian Gulf. Peru.
Italy, including the Republic of San Marino and the Italian Offices of Tunis and Tripoli in Barbary, Massowah, Egypt and Assab, Abyssinia.	Portugal, including Madeira and the Azores. Portuguese Colonies of Goa and its Dependencies (Damao and Diu), Macao, Timor Cape de Verd Islands and Dependencies (Bissau and Casheu), Ambrizetti, Islands of St. Thomas and Prince (in Africa), with the Establishment of Ajuda, Angola, Delagoa Bay and Mozambique.
Japan and Japanese Post Offices in Shanghai, Cheefoo, Chin-King, Hankow, Ningpo Fouchow, Newyang, Kiukiang and Tientsin (China) and at Fusampo (Corea).	Roumania (Moldavia and Wallachia). Russia, including Finland.
Liberia, Luxemburg.	Salvador, St. Helena.
Madeira, Malay States.	St. Pierre & Miquelon.
Malta and its dependencies, i.e., Gozzo, Comino and Ciminotto.	Sarawak, Servia., Seychelles, Siam.
Marquesas Islands, Mexico, Montenegro.	Spain, including the Balearic Islands, the Canary Islands, the Spanish possessions on the Northern Coast of Africa and the Republic of Andorra, and the Postal Establishments of Spain upon the Western Coast of Morocco.
Natal, including Zulu Land, Netherlands.	Spanish Colonies of Fernando Po, Annobon and Dependencies and Marian Islands.
Netherland Colonies of Dutch Guiana (Surinam), Curaçoa and Dependencies (viz.: Bonaire, Aruba, the Netherland portion of St. Martin, St. Eustache and Saba), Java, Madura, Sumatra, Celebes, Borneo (except Northwest part) Billiton, Archipelagos of Banca and Riouw, Sunda Islands (Bali, Lombok, Sumbawa, Floris and the Southwest part of Timor), the Archipelago of the Moluccas and the Northwest part of New Guiana (Papua).	Sweden, Switzerland. Tahiti Transvaal. Turkey, European and Asiatic.
New Zealand, Nicaragua.	Uganda, United States of America. Uruguay. Venezuela. Zanzibar.

Prepayment of all classes of correspondence must be effected by means of Stamps.

RATES OF POSTAGE TO PLACES NOT COMPRISED IN THE UNIVERSAL POSTAL UNION.

COUNTRIES NOT COMPRISED IN THE POSTAL UNION.	For a Letter, per ½ oz.	For a Single Post Card.	For a Reply Post Card.	For Newspapers or other Printed Papers, per 2 oz.	Registration Fee.	For Commercial Papers.	For Paterna.
a. Abyssinia	d.	d.	a	d.	d.		
e. Afghanistan							
e. a. Africa (West Coast Native Possessions)					in. 4		
e. Arabia							
Bechuanaland Protectorate							
Including Kanye, Lake Ngami, Macloutsie, Molepolole, Palachwe, (Khamas Town), Rhodesia (comprising Mashonaland, Matabelleland and Northern Zambesi), Shoshong and Tati River	5	1	2	1	4		
China					none		
Friendly Islands							
e. a. Madagascar viâ Marseilles (except French Establishments)							
e. " viâ Mauritius					in. 4		
e. Morocco (except places given in note)					none		
						Same as Printed Papers except that lowest charge is 2½d.	Same as Printed Papers except that lowest charge is 2½d.

Prepayment to Morocco is *compulsory*, with the exception of Casablanca, Fex, Larache Mazagan, Mogador Rabat, Saffi, Tangier, and Tetuan, to which places only registra-

tion extends. To these places (at each of which the Gibraltar P.O. maintains an agency under the Postal Union regulations) correspondence can be sent under the conditions applicable to Gibraltar.

Navigators Islands (Samoa)	.	5	1	2	1	4	Same as for Printed Papers except that lowest charge is 2d.
Rhodesia	.						
a. Society Islands	.						
a. Other parts	.						
						in. 4	Same as for Printed Papers except that lowest charge is 2d.

(c) denotes that payment is *compulsory*, it being in all other cases optional; (a) that an *additional charge* is made on delivery; (in) that the Registration is *incomplete*, not extending beyond Port of Arrival.

Prepayment of all classes of correspondence must be effected by means of Stamps.

INSURANCE OF LETTERS.

The system of insuring Letters, under the Insurance Agreement of the Universal Postal Union, is in force between this Colony and the United Kingdom and the undermentioned Countries and Places:—

Algeria, Annam, Argentine Republic, Austria, Hungary, Azores.	Madagascar (Antannarivo, Diego Suarez, Majunga, Ste. Marie de Madagascar, Tamatave only).
Belgium, British Guiana, Bulgaria	Madeira, Martinique, Mayotte
Cameroons (Cameroon and Victoria only).	New Caledonia, Newfoundland, Norway, Nossi Bé.
Canary Islands, Cape Verd Islands (Santiago and St. Vincent only), Ceylon, Chili (Chilian, Concepcion, Santiago, Talca, and Valparaiso only), Cochin China, Crete (Candia, Canea and Retimo).	Portugal, Portuguese East Africa (Lorenzo Marquez, Mozambique and Quilimane only), Portuguese West Africa (Benguela, Congo, Loanda and Mossamedes in Angola, Bolama in Guinea, and St. Thomé only).
Dahomey (Agoué, Carnotville, Cotonou, Dogba, Great Popo, Porto Novo, Sagou, Savalon, Whydah and Zagnanado only).	Réunion, Roumania, Russia.
Danish West Indies (St. Thomas, St. John and St. Croix), Denmark (including the Faroe Islands, Greenland and Iceland).	St. Helena, Senegal (Daker, Goree, Rufisque, St. Louis, Thyès, and Tivaouane only).
Egypt.	Servia, Spain, including the Balearic Islands, Sweden, Switzerland.
Falkland Islands, France, French Congo (Libreville & Loango only), French Guiana, French Guinea.	Tonquin, Trinidad, Tripoli (Italian Post Office), Tunis, Turkey (Beyrout, Caïfa or Haifa Cavalla, Chios (Seio), Constantinople, Dardanelles, Dedeagatch, (Dedeagh), Durazzo, Jaffa, Karassonde (Keresun), Mytilene, Prevezza, Rhodes, Salonica, Samsoun, San Giovanni di Medua, Santi Quaranta, Smyrna, Trebizond, (Valona, Vathy only).
Gaboon, Gambia, Germany, Guadeloupe, Holland, Hong Kong.	
India, Italian East Africa (Assab and Massowah only), Italy, Ivory Coast.	
Jibouti.	
Lagos, Luxemburg.	

Letters tendered for insurance will be accepted by the Post Office on payment of the fee and subject to the conditions stated below:—

Fee.	Limit of Compensation.	Fee.	Limit of Compensation.
s. d.	£	s. d.	£
0 8	12	3 2	72
1 2	24	3 8	84
1 8	36	4 2	96
2 2	48	4 8	108
2 8	60	5 2	120

The fee, which includes the Registration fee, must be prepaid in addition to the full postage by Postage Stamps, which must be affixed by the sender to the cover of the letter.

As few stamps as possible should be used to prepay the postage and insurance fee, and the stamps must not be folded over the edge of the cover. When more stamps than one are used they must be affixed with spaces between them.

A letter is the only article of mail matter which will be accepted for insurance. Post Cards, Printed Papers, Commercial Papers or Sample Packets will not be accepted.

Letters containing Coin, anything made of gold or silver, precious stones, jewellery, or any article liable to Customs duty in the country of destination cannot be insured.

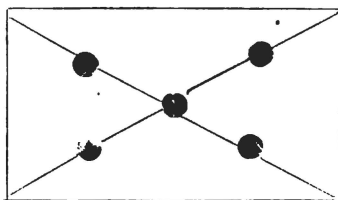
The insurance system is specially applicable to letters which contain bank-notes coupons, securities, &c.

A letter tendered for insurance must not be addressed to initials, or in pencil and it must be enclosed in a strong cover, and be securely fastened and sealed with fine wax in such a way that it cannot be opened without leaving traces of violation. Envelopes with black or coloured borders must not be used. Seals must be placed over each flap, or seam, of the cover of a packet; and if the packet is tied round with string or tape, a seal must be placed on the ends where they are tied. All the seals must be of the same kind of wax, and must bear distinct impressions of the same private device. Coins must not be used for sealing; and the device of the seal must not consist merely of straight, crossed, or curved lines which can be imitated readily.

The onus of properly enclosing and sealing the letter lies upon the sender, and the Post Office does not assume liability for loss arising from the defects of the cover or the seals, which may not be observed at the time of posting.

The amount for which a letter is insured must not exceed its actual value, and must be written by the sender both in words and in figures at the top of the address side of the cover, thus :—

“Insured for £12,” or whatever the amount may be. Alteration, or erasure, of the inscription will not be allowed, if a mistake be made, the entry must be completely struck out and a new entry made by the sender. The seals on an ordinary envelope of an insured letter must be placed as shown below :—



Letters which do not fulfil the foregoing conditions will not be accepted for insurance.

Insured letters will have all the safeguards of the Registration system, and a certificate of posting must always be obtained by the sender of an insured letter. An acknowledgment of receipt of the delivery may also be obtained under the same conditions as those applicable to Registered letters, i.e. on payment of a further fee of 2d.

Compensation for the loss in the post of a letter, or of its contents, will not exceed the amount of the actual loss, and will not be paid at all for a letter containing any prohibited article, or for any letter which has been delivered without external trace of injury and has been accepted without remark by the addressee.

Claim for compensation will not be entertained if made more than a year after the date of posting of the letter.

Legal liability to give compensation in respect of any letter for which an insurance fee has been paid, will not attach to the Postmaster for Jamaica either personally, or in his official capacity. The final decision upon all questions of compensation rests with the postal administration of the country in which the loss has taken place.

Insured letters will, for the present, be forwarded only by the direct Fortnightly Mail Steamer.

INTERNAL POSTAGE RATES.

LETTERS.	POST-CARDS.		Newspapers.	Prices Current.	BOOK PACKETS.	PARCELS.	Registration Fee.
For each Half-ounce or fractional part thereof.	Single	Reply Paid.			For each two ounces or fractional part thereof.	For each two ounces or fractional part thereof.	
One-penny.	Half-penny.	One-penny.	Half-penny.	Half-penny.	Half-penny.	One-penny.	Two-pence.

REGULATIONS.

Letters, newspapers, prices current and book packets which are *wholly unpaid* will be liable to a surcharge equal to double the prepaid rate; and, if they be insufficiently prepaid, to a surcharge equal to *double the deficiency*.

Private Post-cards prepaid by means of half-penny postage stamps may be sent by the Inland Post on the following conditions:—

They must be of ordinary card-board not thicker than the material used for the Official Inland Post-card. The maximum size must correspond as nearly as possible with the size of the Inland Official Card, and the minimum size must not be less than $3\frac{1}{4}$ by $2\frac{1}{4}$ inches.

The rules and regulations relating to the Official *Inland Post Card*, and to the Official *Foreign* and *Private Post-cards*, apply equally to *Inland-Private Post-cards*.

A Private Post-card which does not conform to the above conditions will be treated as a letter and charged accordingly.

The postage on a parcel must be fully prepaid or it cannot be forwarded.

A book packet may not exceed 3 pounds in weight, nor 2 feet in length, nor 1 foot in width or depth, except it be intended for transmission by Mail Coach. (See note below.)

A Parcel may not exceed 8 ounces in weight, 2 feet in length nor 1 foot in width or depth, except it be intended for transmission by Mail Coach. (See note below.)

Newspapers, prices current, book packets and parcels must be posted without a cover, or in a cover open at the ends or sides so as to admit of the contents being easily withdrawn for examination. The mere clipping of the corners or of the sides of an envelope or other cover is *insufficient*. They must not contain any letter or communication of the nature of a letter, nor anything that may injure the officers of the Post Office or the contents of the mail bags.

If any letter or communication of the nature of a letter be found in a newspaper, prices current, book packet or parcel it will be withdrawn and surcharged at the *wholly unpaid letter-rate of postage*. If inseparable the whole packet will be liable to the letter-rate of postage.

The following may, however, be transmitted by book post :—

OLD LETTERS which have apparently passed through the Post before and have served their original purpose.

COPIES OF LETTERS which do not bear a present date and which it is manifest are not serving the purpose of *original* letters.

LETTERS which are intended for publication in a newspaper or otherwise.

CIRCULARS, *i.e.* which, according to internal evidence, are being sent in identical terms to several persons and the whole or greater part of which is printed, engraved or lithographed.

Such letters and circulars must not, however, be closed in any manner and must be so put up as to admit of easy examination of their contents.

Any letter or other mail matter may be registered on pre-payment of the registration fee and postage.

Packets containing money, jewelry or other value, *must be registered* and must be prepaid at the *letter-rate of postage*.

Any Packet found to *contain value*, but not registered, will be liable to a surcharge equal to double the registration fee, *viz.*, eight-pence.

Additional postage is not charged upon any Mail Matter which is re-directed by an Officer of the Post Office, or upon any *Letter* which may be re-directed and re-posted *intact* at the Post Office of delivery. Post Cards, Newspapers, Prices Current, Book Packets and Parcels which may have been taken out of the Post Office, will, however, when re-directed and re-posted, be charged additional postage, at the prepaid rate.

The fee for detaining and delivering in Kingston, Packet Letters addressed to District Post Offices, or for detaining and re-directing such Letters to any other Postal Address, has been reduced from 2s. 6d. to 1s. for each service.

Applications for the detention, or re-direction of correspondence, from places abroad *must* be made prior to the arrival of the Mail.

NOTE.—Parcels intended for transmission by Mail Coach, or which are addressed to places abroad, *must not be put into the Letter Box*, but must be handed to the Postmaster.

STREET AND RAILWAY LETTER BOXES.

There are 19 Street Letter Boxes at the following places, which are cleared as under :

LOCALITY.	1st.	2nd.	3rd.	4th.	Fortnightly Packet Mail.
	A.M.	A.M.	P.M.	P.M.	A.M.
1. North-st. and King-st.	5.50	9.45	12.20	2.10	9.45
2. Parade	6.00	9.55	12.30	2.20	9.55
3. Harbour & Princess-sts.	6.10	10.05	12.40	2.30	10.05
4. Port Royal-st. & Luke-lane	6.15	10.15	12.50	2.40	10.15
5. Victoria Market	6.25	10.25	12.55	2.45	10.25
			M.		
6. Cross Roads Constabulary Station	5.30	9.30	12.00	2.00	9.30
			P.M.		
7. Torrington Bridge	5.45	9.45	12.15	2.15	9.45
8. Alman Town Constabulary Station	5.55	9.55	12.25	2.25	9.55
9. Constabulary Station, (South { Camp Road)	6.05	10.05	12.35	2.35	10.05
10. Kingston Gardens	6.15	10.15	12.45	2.45	10.15
11. Fire Brigade Station	6.25	10.25	12.55	2.55	10.25
12. Rae Town	5.40	9.40	12.10	2.10	9.40
13. Brown's Town Constabulary Sta- tion	5.50	9.50	12.20	2.20	9.50
14. Park Lodge	6.05	10.05	12.35	2.35	10.05
15. Highholborn & Laws Sts.	6.10	10.10	12.45	2.45	10.10
16. Myrtle Bank Hotel	6.20	10.20	12.50	2.50	10.20
17. Regent Street and Spanish Town { Road	6.10	10.10	12.40	2.40	10.10
18. Marine Gardens	6.25	10.25	12.55	2.55	10.25
19. Queen's Hotel	6.20	10.20	12.50	2.50	10.20

Letter Boxes have been also erected at all Railway Stations in the island. These boxes are cleared ten minutes before the departure of each Passenger Train.

MAIL DELIVERY IN KINGSTON.

The delivery of correspondence by letter carriers takes place daily from the General Post Office as under, viz :—10.00 a.m., 12.00 m., and 3.15 p.m.

The mails are made up at the following hours :—

	Newspaper, Books, &c.	Registered Letters.	Ordinary Letters.	Late Letters.	
				1d. Extra.	2d. Extra.
	P.M.	P.M.	P.M.	P.M.	P.M.
Southside Mails					
Northside " }	2.00	2.15	2.50	3.00	3.10
Windward " viâ Bath					
Daily Mails to Stony Hill, Port Royal, Gordon Town, &c. }	2.00	2.15	2.50
Daily Mails by Train and Coach:—					
Chapelton	A.M. 6.30
Santa Cruz, Black River, Sav.-la-Mar, Mandeville and Christiana }	10.30
Port Maria and Highgate	P.M. 1.00

HOUSE DELIVERY.

Correspondence is delivered by Letter Carriers in all parts of the City, including "Smith Village," "Hannah Town," "Campbell Town," "Franklin Town," "Brown's Town," "Passmore Town," and the northern limits of Arnold Road and South Camp Road, including the Goodwin's Land.

HOURS FOR MAKING UP MAILS, KINGSTON GENERAL POST OFFICE.

The mails from and to the country districts respectively are due at and despatched from the General Post Office as under :—

	Due at.	Depart			Due at.	Depart.
Windward	6.45 a.m.	4 p.m.	Southside	By Train.	9.00 a.m.	4.15 p.m.
			Northside		11.00 a.m.	

Mails are exchanged daily by each Passenger Train between Kingston, Gregory Park, Spanish Town, Bog Walk, Linstead, Ewarton, Hartlands, Old Harbour, May Pen, Four Paths, Porus, Williamsfield, Mandeville, Shooter's Hill, Mile Gully, Balacava, Siloah, Ipawich, Catadupa, Cambridge, Montpelier, Anchovy and Montego Bay; and to Riversdale, Troja, Albany, Richmond, Annotto Bay, Buff Bay, Orange Bay, Hope Bay, St. Margaret's Bay and Port Antonio. There are also daily mails between Kingston, Halfway-Tree, Stony Hill, Gordon Town, Cold Spring, Mavis Bank, Hagley Gap and Cedar Valley, between Kingston and Up-Park Camp, between Kingston and Port Royal; and by Train and Coach, between Kingston and Chapelton; Kingston and Mandeville; Kingston and Black River, viâ Middle Quarters; Kingston and Santa Cruz, viâ Braes River; Kingston and Sav.-la-Mar, viâ Ramble, &c.; Kingston and Port Maria, viâ Highgate; Kingston and Christiana.

**ARRIVAL AND DEPARTURE OF DAILY MAILS FROM AND FOR KINGSTON EXCLUSIVE
OF MAILS BY TRAIN AND COACH.**

Names.	Arrival from Kingston			Distance in miles from Kingston.	Departure for Kingston.	
	Hour.				Hour.	
	A.M.	P.M.	P.M.		A.M.	P.M.
Up-Park Camp	9.40	12.40	& 4.30	2	10.00	12.55 & 2.25
Halfway-Tree	9.40	12.40	1.40 & 4.00	8	8.35, 10.00, 1.00	& 2.00
Gordon Town		5.16		9	7.05	
Cold Spring		7.21		14	5.15	
Port Royal		4.45		5	9.00	
Stony Hill		6.15		9	6.00	

**ARRIVAL AND DEPARTURE OF DAILY MAILS FROM AND FOR KINGSTON AND EACH
INTERMEDIATE OFFICE ON RAILWAY LINE.**

Offices.	Despatch of Train.			Arrival of Train.		
	1st Train.	2nd Train.	3rd Train.	1st Train.	2nd Train.	3rd Train.
DOWN :	A.M.	A.M.	P.M.	A.M.	M.	P.M.
<i>Kingston to Montego Bay—</i>						
Kingston	7.30	11.30	4.15	7.45
Gregory Park	7.45	11.45	4.30	7.45	11.45	7.45
		M.				
Spanish Town	8.00	12.00	4.45	8.00	12.00	4.45
Hartlands	8.09	8.09	...	
		P.M.			P.M.	
Old Harbour	8.29	12.28	5.16	8.29	12.28	5.16
May Pen	8.53	12.52	5.39	8.53	12.52	5.39
Four Paths	9.04	1.05	5.50	9.04	1.05	5.50
Porus	...	1.34	6.18	9.30	1.34	6.18
Williamsfield	...	2.00	6.44	...	2.00	6.44
Shooter's Hill	...	2.07	2.07	6.50
Mile Gully	...	2.30	2.30	
Balaclava	...	3.05	3.05	
Siloah	...	3.30	3.30	
Ipewich	...	4.01	4.01	
Catadupa	...	4.30	4.30	
Cambridge	8.38	4.44	4.44	
Montpelier	9.00	5.03	...	9.00	5.03	
Anchovy	9.10	5.13	...	9.10	5.13	
Montego Bay	9.34	5.37	

ARRIVAL AND DEPARTURE OF DAILY MAILS FROM AND FOR KINGSTON AND EACH INTERMEDIATE OFFICE ON RAILWAY LINE, *contd.*

Offices.	Despatch of Train.			Arrival of Train.		
	1st Train.	2nd Train.	3rd Train.	1st Train.	2nd Train.	3rd Train.
UP.						
<i>Montego Bay to Kingston—</i>	A.M.	A.M.	P.M.	A.M.	A.M.	P.M.
Montego Bay	8.20	4.20
Anchovy	8.47	4.49	...	8.47	4.49
Montpelier	8.58	5.08	...	8.58	5.08
Cambridge	9.16	9.16	5.20
Ostadupa	9.30	9.30	...
Ipswich	9.59	9.59	...
Siloah	10.29	10.29	...
Balaclava	10.55	10.55	...
Mile Gully	11.37	11.37	...
Shooter's Hill . . .	6.10	11.59	11.59	...
Williamsfield . . .	6.18	P.M.	...	6.18	P.M.	...
Porus . . .	6.44	12.07	...	6.44	12.07	...
Four Paths . . .	7.12	12.34	4.00	7.12	12.34	...
May Pen . . .	7.23	1.04	4.27	7.23	1.04	4.27
Old Harbour . . .	7.47	1.15	4.38	7.47	1.15	4.38
Hartlands . . .	8.07	1.39	5.02	8.07	1.39	5.02
Spanish Town . . .	8.07	1.58	5.22	8.07	1.58	5.22
Gregory Park . . .	8.17	2.07	5.32	8.17	2.07	5.32
Kingston . . .	8.31	2.21	5.46	8.31	2.21	5.46
DOWN.						
<i>Kingston to Ewarton—</i>	A.M.	P.M.	...	A.M.	P.M.	...
Kingston . . .	7.30	2.00
Spanish Town . . .	8.04	2.38	...	8.04	2.38	...
Bog Walk . . .	8.29	3.04	...	8.29	3.04	...
Linstead . . .	8.39	3.15	...	8.39	3.15	...
Ewarton	8.54	3.30	...
UP.						
<i>Ewarton to Kingston—</i>
Ewarton . . .	9.15	4.38
Linstead . . .	9.30	4.53	...	9.30	4.53	...
Bog Walk . . .	9.41	5.05	...	9.41	5.05	...
Spanish Town . . .	10.05	5.32	...	10.05	5.32	...
Kingston	10.40	6.00	...
DOWN.						
<i>Kingston to Port Antonio—</i>
Kingston	2.00
Spanish Town	2.38	...	2.38
Bog Walk	3.02	...	3.02
Riversdale	3.24	...	3.24
Troja	3.41	...	3.41
Richmond	4.03	...	4.03
Albany	4.30	...	4.30
Annotto Bay	4.58	...	4.58
Buff Bay	5.24	...	5.24
Orange Bay	5.34	...	5.34
Hope Bay	5.50	...	5.50
St. Margaret's Bay	6.01	...	6.01
Port Antonio	6.20
UP.						
<i>Port Antonio to Kingston—</i>
Port Antonio	6.20
St. Margaret's Bay	6.39	...	6.39
Hope Bay	6.50	...	6.50
Orange Bay	7.06	...	7.06
Buff Bay	7.17	...	7.17
Annotto Bay	7.44	...	7.44

**ARRIVAL AND DEPARTURE OF DAILY MAILS FROM AND FOR KINGSTON AND EACH
INTERMEDIATE OFFICE ON RAILWAY LINE, *contd.***

Offices.	Despatch of Train.			Arrival of Train.		
	1st Train.	2nd Train.	3rd Train.	1st Train.	2nd Train.	3rd Train.
Up.		A.M.			A.M.	P.M.
<i>Port Antonio to Kingston.</i>						
Albany	8.11	8.11	
Richmond	8.39	8.39	
Troja	9.00	9.00	
Riversdale	9.17	9.17	
Bogwalk	9.41	9.41	
Spanish Town	10.05	10.05	
Kingston	10.40	

The daily mails between Kingston, Halfway-Tree, Gordon Town, Cold Spring, Mavis Bank, Hagley Gap and Cedar Valley, between Kingston and Up-Park Camp and between Kingston and Port Royal, arrive at and depart from the General Post Office as under:—

Offices.	Due at G. P. O.		Depart from G. P. O.	
Up-Park Camp . . .	10.40 a.m.	1.55 p.m., 3 p.m.	9 a.m. 12 m.	3.10 p.m.
Halfway-Tree . . .	9 a.m., 10.40 a.m.	1.55 p.m., 3 p.m.	9 a.m. 12 m.	3.30 p.m.,
Gordon Town, Cold Spring, Mavis Bank, Hagley Gap and Cedar Valley . . .	9 a.m.	.	.	3.30 p.m.
Port Royal . . .	10.30 a.m.	.	.	3.15 p.m.

The Mails for transmission by the Mail Coach between Ewarton and Dry Harbour are closed at the General Post Office on Mondays, Wednesdays, and Fridays at 6.30 a.m., and are due at the General Post Office on Tuesdays, Thursdays and Saturdays by the last train; and mails are closed *daily* at 10.30 a.m. for transmission by the Mail Coaches between Williamsfield and Mandeville, Balaclava and Santa Cruz, Ipswich and Black River, and by Van between Montpelier and Sav.-la-Mar; and the Return Mails are due at the General Post Office by the 2.35 p.m. train. The Mails by Van between Richmond and Port Maria are closed *daily* at 1.00 p.m., and the Return Mails are due at the General Post Office *daily* at 11.00 a.m. Mails for transmission by the Van between Montego Bay and Falmouth and by Coach between Montego Bay and Lucea are closed at the General Post Office on Tuesdays, Thursdays, and Saturdays at 10.30 a.m., and the Return Mails are due at the General Post Office on the *same days* by 2.35 p.m. Train. Mails are also exchanged with Green Island via Lucea on these days. The Mails by Van between May Pen and Chapelton are closed *daily* at the General Post Office at 6.30 a.m., and the Return Mails are due *daily* at the General Post Office by 8.45 a.m. Train.

TRI-WEEKLY MAILS.

ARRIVAL AND DEPARTURE OF TRI-WEEKLY MAILS FROM AND FOR KINGSTON, &c.*

Names.	Distance in Miles from Kingston.	Arrival from Kingston.		Departure for Kingston.	
		Days.	Hour.	Days.	Hour.
NORTH-WESTERN TRUNK, POST OFFICES ON MAIN LINE.					
			P.M.		A.M.
Ewarton (by Train)	31	Tu. Th. Sat.	7 10	Tu. Th. Sat.	9 15
Moneague	41	"	9 45	"	6 30
Claremont	49	"	11 00	"	5 45
			A.M.		
Lime Hall	55	"	12 05	"	3 50
Saint Ann's Bay	79	"	12 50	"	3 05
Laughlands	63	Wed. Fri. Mon.	2 05	Wed. Fri. Mon.	1 50
Runaway Bay	69	"	3 05	"	12 55
Dry Harbour	73	"	3 40	"	12 15
			P.M.		
Rio Bueno	78	"	4 35	"	11 20
Duncans	84	"	5 40	"	10 15
Falmouth	94	"	7 25	"	8 30
Little River	105	"	9 30	"	6 25
Montego Bay	116	"	11 30	"	4 30
			P.M.		
Flint River	128	"	1 55	"	1 45
			M.		
Lucea	141	"	3 40	"	12 00
			A.M.		
Green Island	153	"	6 45	"	8 00
BRANCH OFFICES.					
			A.M.		P.M.
Lluidas Vale	39	"	7 20	"	3 40
Point Hill	45	"	9 15	"	1 45
Crofts Hill	45	"	9 15	"	1 45
Walkers' Wood via Moneague	49	"	7 0	"	4 0
Pedro, via Claremont	56	"	6 45	"	5 0
Ocho Rios	67	"	3 04	"	10 46
Retreat	76	"	4 57	"	8 58
Oracabessa	84	"	6 45	"	7 05
Port Maria	91	"	8 50	"	5 00
Bamboo via St. Ann's Bay	67	"	7 40	"	3 20
Gayle	88	"	7 30	"	6 25
Guy's Hill	96	"	10 15	"	4 00
			P.M.		A.M.
Pear Tree Grove via Troja	40	Tu. Th. Sat.	6 15	Tu. Th. Sat.	6 30
			A.M.		P.M.
Brown's Town	81	Wed. Fri. Mon.	5 21	Wed. Fri. Mon.	8 45
Stewart Town	87	"	6 56	"	6 00
Alexandria	90	"	8 20	"	5 45
Cave Valley	102	"	10 10	"	4 00
			P.M.		
Boroughbridge via Cave Valley	92	"	12 05	"	1 50
			A.M.		
Watt Town via Stewart Town	96	"	10 30	"	3 30
Clark's Town	89	"	6 30	"	6 20
Jackson Town	93	"	7 15	"	5 45
Ulster Spring	108	"	9 20	"	4 00
Hampden	108	"	9 35	"	5 15
Adelphi	110	"	11 40	"	3 00
Deeside	110	"	11 45	"	3 00

* Corrected to new Railway Time Tables of 1900.

ARRIVAL AND DEPARTURE OF TRI-WEEKLY MAILS FROM AND FOR KINGSTON, &C.*

Names.	Distance in Miles from Kingston.	Arrival from Kingston.		Departure for Kingston.	
		Days.	Hour.	Days.	Hour.
BRANCH OFFICES, continued.					
Riverside via Luces .	148	Wed. Fri. Mon.	P.M. 5 45	Wed. Fri. Mon.	A.M. 9 30
Point via Montego Bay .	129	"	8 30	"	6 00
SOUTH-WESTERN TRUNK, POST OFFICES ON MAIN LINE.					
Mandeville .	59	Tu. Th. Sat.	P.M. 8 15	Tu. Th. Sat.	A.M. 4 30
Spur Tree .	66	"	9 55	"	2 50
Pepper .	72	"	11 00	"	12 45
Santa Cruz .	80	"	12 25	Wed. Fri. Mon.	P.M. 11 20
Lacovia .	86	Wed. Fri. Mon.	A.M. 1 30	"	10 15
Middle Quarters .	90	"	2 15	"	9 30
Black River .	99	"	3 50	"	7 55
Whitehouse .	111	"	6 10	"	5 40
Bluefields .	119	"	7 35	"	4 15
Savanna-la-Mar .	129	"	9 20	"	2 30
Grange Hill .	188	"	P.M. 2 30	"	A.M. 7 30
SOUTH-WESTERN TRUNK, BRANCH OFFICES.					
Guanaboa Vale via Spanish Town .	23	"	A.M. 8 20	"	P.M. 2 40
Bartons via Old Harbour .	32	"	7 40	"	3 20
Hayes .	41	"	6 10	"	6 8
Alley } via May Pen	48	"	7 25	"	4 53
Salt River .	57	"	10 5	"	2 10
Frankfield } via May Pen and	58	Wed. Fri. Mon.	P.M. 3 30	"	A.M. 8 00
Rock River } Chapelton	52	"	2 00	"	P.M. 4 00
Milk River } via Four Paths	49	"	A.M. 8 45	"	4 00
Mocho .	44	"	7 20	"	4 00
Newport } via Mandeville	65	"	7 0	"	4 40
Cross Keys .	70	"	8 30	"	3 0
Devon via Mile Gully .	71	"	8 35	"	4 30
Christiana .	65	Daily	5 35	"	8 45
Walderston } via Shooters Hill	59	"	3 30	"	10 35
Mile Gully .	65	Wed. Fri. Mon.	7 00	"	6 05
Balaclava via Mile Gully .	72	"	A.M. 10 05	"	3 00
Troy via Balaclava .	91	"	P.M. 2 00	"	A.M. 7 30
Pratville via Newport .	75	"	9 45	"	P.M. 2 0
Watson's Hill } via Spur Tree	73	"	A.M. 7 0	"	5 25
Southfield .	83	"	9 55	"	2 30
Alligator Pond via Watson Hill	80	"	8 50	"	3 0
Malvern via Santa Cruz .	90	"	7 40	"	4 0
Newmarket via Middle Quarters	100	"	8 40	"	3 0
Springfield via Newmarket .	107	"	P.M. 10 45	"	F.M. 12 50
Braes River via Santa Cruz .	88	Daily	P.M. 5 10	Daily	A.M. 8 20

* Corrected to new Railway Time Tables of 1900.

ARRIVAL AND DEPARTURE OF TRI-WEEKLY MAILS FROM AND FOR KINGSTON, &C.*

Names.	Distance in Miles from Kingston.	Arrival from Kingston.		Departure for Kingston	
		Days.	Hour.	Days.	Hour.
SOUTH-WESTERN TRUNK, BRANCH OFFICES <i>contd.</i>					
Myersville <i>viâ</i> Santa Crus .	88	Wed. Fri. Mon.	A.M. 7 15	Wed. Fri. Mon.	P.M. 3 45
Bethel Town .	111	Daily	P.M. 7 35	"	A.M. 6 20
Lamb's River .	116	"	A.M. 6 40	"	P.M. 6 00
Chester Castle .	114	"	P.M. 6 30	"	A.M. 7 30
Ramble .	117	"	" 6 30	"	P.M. 7 00
Mountainside <i>viâ</i> Black River	107	Wed. Fri. Mon.	A.M. 7 40	"	P.M. 3 20
Little London } <i>viâ</i> Sav.-la-Mar	138	"	P.M. 1 45	"	A.M. 8 0
Petersfield }	135	"	" 1 30	"	P.M. 8 30
Darliston }	144	"	" 4 10	"	A.M. 5 30
Negril }	139	"	" 4 40	"	P.M. 5 00
SOUTH-EASTERN TRUNK, POST OFFICES ON MAIN LINE.					
Full Bay .	10	Tu. Th. Sat.	5 40	Tu. Th. Sat.	5 05
Saint David .	19	"	7 15	"	3 30
Morant Bay .	31	"	9 20	"	1 25
Port Morant .	38	"	10 35	"	12 10
Bath .	45	"	11 50	Wed. Fri. Mon.	P.M. 10 55
Plantain Garden River .	52	Wed. Fri. Mon.	A.M. 1 05	"	9 40
Hector's River .	57	"	2 05	"	8 40
Manchioneal .	62	"	3 00	"	7 45
Priestman's River .	71	"	4 40	"	6 05
Port Antonio .	83	"	6 45	"	4 0
Fellowship } <i>viâ</i> Pt. Antonio	86	"	8 0	"	2 35
Moore Town }	92	"	10 9	"	12 30
SOUTH-EASTERN TRUNK, BRANCH OFFICES.					
B. M. Valley } <i>viâ</i> Morant Bay	37	"	6 42	"	4 18
Trinityville }	43	"	8 30	"	2 30
Bowden <i>viâ</i> Port Morant .	41	"	6 30	"	5 15
(Daily with Port Morant)					
NORTH-EASTERN TRUNK, BRANCH OFFICES.					
Belvedere .	10	Tu. Th. Sat.	P.M. 7 00	Tu. Th. Sat.	A.M. 5 40
Castleton <i>viâ</i> Annotto Bay .	19	Wed. Fri. Mon.	A.M. 9 00	Wed. Fri. Mon.	P.M. 3 0
Glengoffe } <i>viâ</i> Stony	20	"	8 14	"	3 0
Lawrence Tavern } Hill	15	"	6 43	"	4 31
Enfield <i>viâ</i> Annotto Bay .	38	"	7 40	"	3 20
Hampstead <i>viâ</i> Port Maria .	52	"	10 45	"	3 0
Mavis Bank }	14	Daily	6 50	Daily	6 0
Hagley Gap (Woburn Lawn) }	17	"	8 55	"	3 55
Cedar Valley }	22	"	9 50	"	3 0
Spring Hill <i>viâ</i> Cold Spring .	23	Wed. Fri. Mon.	8 0	Wed. Fri. Mon.	3 0
Clonmel <i>viâ</i> Richmond .	43	Tu. Th. Sat.	P.M. 6 00	Tu. Th. Sat.	A.M. 6 30
Highgate " " .	39	Daily	4 35	"	7 50

* Corrected to new Railway Time Tables of 1900.

MONEY ORDERS.

Money Orders are issued at the head office, Kingston, and at the several Parochial Treasuries. Applications for Money Orders addressed either to the Postmaster for Jamaica or to a Parochial Treasurer are free of postage and registration fee.

The commissions on Money Orders drawn on the United Kingdom areas under:—

For any sum not exceeding £2 - 0s. 9d. | Above £5 and not exceeding £7 - 2s. 3d.
Above £2 and not exceeding £5 - 1s. 6d. | Above £7 and not exceeding £10 - 3s. 0d.

The commissions on Money Orders drawn on the United States, Canada and Panama are as under:—

For any sum not exceeding	£2	-	0s.	9d.
Above £2 and not exceeding	5	-	1	6
" 5 " "	7	-	2	3
" 7 " "	10	-	3	0

The rate of exchange of Money Orders between the United States, Canada and Jamaica is \$4 87c. to the £.

The commissions on Money Orders drawn on Barbados and British Guiana and the Windward, Leeward Islands, British Honduras, Bermuda, Turks Islands and Trinidad are as under:—

For any sum not exceeding £2 - 0s. 6d. | Above £5 and not exceeding £7 - 1s. 6d.
Above £2 and not exceeding £5 - 1s. 0d. | Above £7 and not exceeding £10 - 2s. 0d.

No single Order can be granted for more than ten pounds.

No application can be entertained for compensation for alleged injury from the non-payment of a Money Order at the expected time. When a Money Order is applied for it must be on the clear understanding that no such claim will be allowed, and that the Post Office is not liable, under any circumstances, to more than one payment of a Money Order, even when, notwithstanding the precautions that are taken, the Order has been paid to a person not entitled to receive the money. Re-payment to the Remitter of a Money Order cannot be made until the Chief Office of the Paying Country has been communicated with; and applications for re-payment should be accompanied by a sum equal to the *original* commission on the Order.

A Through Money Order Exchange also exists between Jamaica and certain British Colonies and Foreign Countries via the United Kingdom. Such Through Money Orders are subject on payment to a deduction of a sum equal to *one-third* of the Commission collected at the Office of Issue. The full name and address of the Payee of a Through Money Order must be given to enable the Chief Money Order Office, London, to forward to the Payee a Money Order for the net amount payable, the Money Order issued to the Remitter being only of value as a receipt for the amount paid and should be retained by the Remitter.

POSTAL ORDERS.

1. Every Postal Order shall be for one of the following amounts, and in respect thereof the following commission shall be paid:—

Amount.	Commission.	Amount.	Commission.
Sixpence -	Half-penny	Two Shillings & Sixpence -	Half-penny
One Shilling -	Half-penny	Five Shillings -	One-penny
One Shilling & Sixpence -	Half-penny	Ten Shillings -	Two-pence

2. Postal Orders will only be issued at a Post Office, and will be payable *only* at the Treasury, Kingston, or at any Parochial Treasury in the island.

3. Postal Orders will, however, be cashed by any District Postmaster or by any Assistant Collector of Taxes (subject to these Regulations) when their respective offices are open; and, provided, that they have sufficient funds for that purpose. They will also be accepted in payment of taxes or other public dues, whenever they have been filled up for payment at the Treasury of the parish in which such dues are being paid.

4. Before a Postmaster issues a Postal Order, the amount of the Order and the Commission thereon shall be paid to him, and he shall sign the Order and stamp it with the Office-Dated-Stamp, specifying the day of the month in which the Order is issued.

5. The amount of a Postal Order, and the commission thereon, must be paid to the Postmaster in cash. Postage stamps will not be accepted in payment for Postal Orders; but postage stamps may, however, be affixed to a Postal Order to an amount not exceeding five pence for the purpose of increasing to that extent the value of such Postal Order. Any stamps in excess of that amount which may be affixed to a Postal Order will not be redeemed by the Paying Officer.

6. Each Postal Order shall be printed on such paper and in such characters and with such distinctive marks, whether on the face of it or in the paper or otherwise and the amount of the commission shall be denominated by means of such stamp or mark as the Postmaster for Jamaica, under the authority of the Governor, shall from time to time direct.

7. The blanks in a Postal Order for the name of the person entitled to the money (in these Regulations referred to as the Payee) and for the name of the Treasury at which it is to be paid may be filled in before or after issue.

8. If the blanks are not filled in before issue the person to whom the order is issued must, before parting with it, fill in the name of the Payee and may fill in the name of the Treasury at which the amount is to be paid.

9. The Payee must sign the receipt at the foot of the Order, and must also fill in the name of the Treasury if that has not already been done.

10. No alteration can be made in the name of the Payee or of the Treasury when once filled in except by the direction of the Chief Treasurer.

11. When a Postal Order is presented for payment, otherwise than through a Banker, the Paying Officer shall require the receipt for the amount of the Order to be first signed and may refuse payment until he is satisfied that it is signed by or under the authority of the person appearing to be the Payee.

12. He may also if the receipt is not signed in his presence, take reasonable means to satisfy himself that the person presenting the Order is either the Payee or his Agent.

13. He shall also require the person presenting the Order to sign his name on the Order before its payment, although the receipt has already been signed.

14. Nevertheless the signature to the receipt shall, in all cases, be a sufficient authority to the Paying Officer for the payment of the amount of the Order if that signature purports to be the signature of the Payee, and it shall not be necessary to prove that the receipt was signed by or under the authority of the Payee.

15. A Postal Order may be crossed. It may be crossed generally by the addition on its face of the words "and Company," or any abbreviation thereof, between two parallel transverse lines thus: " & Co." or of two parallel transverse lines simply. It may be crossed specially by the addition on its face of the name of a Banker in which case the order shall be deemed to be crossed to that Banker.

16. A Postal Order which is crossed generally may also be crossed specially.

17. A Banker to whom a Postal Order is crossed may again cross it specially to another Banker as his Agent for collection.

18. Where a Postal Order is crossed generally, the Paying Officer may pay it to any responsible person known to him, as well as through a Banker.

19. Where a Postal Order is crossed specially, the Paying Officer shall refuse to pay it except to the Banker to whom it is crossed or his Agent for collection.

20. Where a Postal Order is crossed specially to more than one Banker, except when crossed to an Agent for the purpose of collection, the Paying Officer shall refuse payment thereof.

21. If a Postal Order, which is crossed whether generally or specially, is presented by or through a Banker with the name of such Banker written or stamped upon the face thereof that name may be accepted as a sufficient receipt for the amount of the Order and the Order may be paid without any other receipt.

22. Provided that when the Order is crossed specially to a second Banker as Agent for collection the name of such second Banker written or stamped upon the face of the Order may be accepted as a receipt under this Regulation.

23. An Order which is crossed generally or specially, if presented for payment by or through a Banker, may be paid at any Treasury in Jamaica notwithstanding that the blank has been filled in with the name of some particular Treasury.

24. After the expiration of three months from the last day of the month in which any such Order is issued the Order shall be payable only on payment, in the manner for the time being directed by the Chief Treasurer, of a commission equal to the amount of the original commission with the addition (if more than three months have elapsed since the said expiration) of the amount of the original commission for any further period of three months which has so elapsed and for any portion of any such period of three months over and above any complete period.

25. A Postal Order will be payable during the hours for the time being appointed for public business at the Office at which it is presented for payment.

26. If a Postal Order presented for payment has any erasure or alteration, or is out, defaced or mutilated, the Paying Officer may refuse payment and refer the person presenting it to the Chief Treasurer.

27. Payment of a Postal Order may be refused or be delayed, but the Paying Officer shall immediately report the cause thereof to the Chief Treasurer.

28. Upon paying a Postal Order the Paying Officer shall immediately place in the space provided for that purpose an impression of his Office Stamp specifying the date of payment, and thereby cancel the Order; but such cancellation must *only* be done at the several Treasuries. A Postal Order which may be cashed by a District Postmaster, an Assistant Collector of Taxes, or be received in payment of taxes or other public dues, shall not be so stamped by them or either of them as it will not be considered to have been paid until it has been presented, accepted, and dealt with, as before directed, at the Treasury at which it is made payable.

29. A Postal Order which has been cashed by a District Postmaster or by an Assistant Collector of Taxes must not be re-issued, but must be included in the first remittance of public revenue to the Treasury at which such Order has been made payable.

30. District Postmasters and Assistant Collector of Taxes must, however, take care that all the Regulations herein laid down have been strictly complied with in the case of Orders which they cash or accept in payment of taxes or other public due.

31. The payment of the amount of a Postal Order, to whomsoever made, shall discharge the Postmaster for Jamaica, the Chief Treasurer and their Officers from all liability whatsoever in respect of that Order notwithstanding any forgery, fraud, mistake or loss which may have been committed or have occurred in reference to such Order or to the procuring thereof or to the obtaining the payment thereof; and notwithstanding any disregard of these Regulations, and notwithstanding anything whatsoever.

PARCEL POST REGULATIONS.

A Parcel Post Exchange between Jamaica and the United Kingdom; certain places via the United Kingdom; British Colonies in the West Indies; British Honduras, Canada and the United States of America is now in operation.

Parcel Post business is transacted at the Head Office, Kingston, ("Blundel Hall") and at the District Post Offices in places called at by the Mail Coaches, the Coastal Steamer and Railway and such other offices as may be notified from time to time.

Parcel mails for the United Kingdom and British Colonies in the West Indies are made up in Kingston on every alternate Tuesday for despatch by the Royal Mail Contract Line of Steamers—parcels being received up to 4 p.m. the previous day, also for the United Kingdom by the Direct Line every alternate Thursday, parcels being received up to 4 p.m., the previous day.

Parcel mails for the United States, Canada and Turks Islands are closed for despatch by each *direct* opportunity from the Port of Kingston—the hour of closing being duly notified on each occasion.

The Parcel Post rates of postage to *all* places, as well as the limit of size and weight, and *general* conditions, will be found in the Table below.

The following are the most important *special* regulations and conditions to be observed with respect to parcels for the United Kingdom, British Colonies, &c. :—

The postage must in all cases be paid in advance, and by means of postage stamps

which must be affixed by the sender, and no parcel will be accepted for transmission which is not sufficiently prepaid.

Each parcel must be plainly directed, such directions setting forth the name and full address of the person for whom the parcel is intended. It should bear the words "Parcel Post" in the upper left hand corner, and the name and address of the sender. The date of posting should also be added. *A parcel must not be posted in a Letter Box but must be taken into a Post Office and presented at the counter to the Postmaster or person in charge.*

A certificate of posting may be obtained, if desired, by the person posting a parcel, but no liability attaches to the Post Office in respect thereof.

Parcels will be liable to Customs duties and regulations, and the sender of each parcel will be required to make a Customs declaration furnishing—upon a special form provided for the purpose, which can be obtained at any Post Office—an accurate statement of the contents and value, the date of posting, and the sender's signature and place of abode. Customs duties will be collected before delivery.

No parcels containing dangerous articles, perishable articles, articles likely to injure other parcels, liquids unless securely packed in proper cases, or any contraband articles or substances will be accepted for transmission. A parcel must not contain another parcel or other postal packet intended for delivery to a person other than the addressee of the first-named parcel.

If on examination of any parcel there shall be found in or with the same any paper or communication of the nature of a letter such paper or communication will be withdrawn therefrom, and will be forwarded to the addressee thereof; or, if it be not addressed, to the addressee of the parcel in or with which the same was found enclosed; and the said letter will be surcharged for delivery at the unpaid inland rate of postage.

Parcels containing articles of an aggregate value exceeding £50 will not be accepted for transmission.

Parcels re-directed from one address to another will be surcharged a fresh postage at the pre-paid rate.

If a parcel cannot be delivered as addressed, or is refused, the sender, if his address be given on the parcel, will be communicated with by the Post Office as to the manner in which the parcel shall be disposed of.

If returned or re-directed from one country to another the parcel will be charged a full rate of postage.

Parcels which cannot be delivered will be kept for a reasonable time before being finally disposed of.

Parcels should be securely and substantially packed and closed by the sender and in some cases seals may be found necessary. If wax is used it should be of the special quality which will withstand a hot climate.*

The following are the *special Regulations* which govern the exchange of parcels with the United States of America:—

A declaration of contents and their value with the sender's signature and address, the date of mailing, and the place of address must be made on the authorised form and fixed to the parcel.

An acknowledgment that a parcel to a stated address had been posted will, if required, be given to the poster, but no liability attaches to the Post Office in respect thereof.

Letters, postcards and written matter of the nature of personal correspondence must not be enclosed in a parcel.

If such be found the letter will be placed in the mails, if separable; and, if the letter be inseparably attached, the whole package will be rejected. If, however, any such should inadvertently be forwarded the country of destination will collect double rate of postage according to the Postal Union Convention.

A parcel may not contain any other parcel intended for delivery at an address other than that borne by the parcel itself. If such enclosed parcel be detected it must be sent forward singly, charged with new and distinct Parcel Post rates.

* This rule does not apply to parcels for the U.S. which must not be closed against inspection in any manner whatever.

Publications which violate the Copyright Laws of the country of destination; poisons and explosive or inflammable substances; fatty substances; liquids, and those which easily liquefy; confections and pastes; live or dead animals, *except* dead insects and reptiles, when thoroughly dried, and live bees put up in wooden boxes closed with a wire screen protected by a moveable wooden lid; fruits and vegetables, and substances which exhale a bad odour; lottery tickets, lottery advertisements or lottery circulars; all obscene or immoral articles; articles which may, in any way, damage or destroy the mails or injure the persons handling them.

Each parcel must be so wrapped or enclosed as to permit its contents to be easily examined by any Postmaster or Customs Officer whose duty it may be to do so; and each parcel will be subject in the country of destination to all Customs duties and all Customs regulations in force in that country for the protection of its Customs revenue.

A parcel may be *registered* on like conditions to those that govern the registration of other correspondence; or, on payment of the sum of two pence (or five cents) additional to the first charge, the sender can obtain a receipt for such parcel from the addressee.

Parcels must be so carefully packed as to be safely transmitted in the mails of either country, both in going to the Post Office of exchange of the country of origin, as well as to the office of address of the country of destination; and they must **NOT BE SEALED OR CLOSED AGAINST INSPECTION**, that is, they must not be secured by means of wax, screws or nails, or in any manner which would not admit of their easy examination by the Customs Authorities in the United States.

The country of destination, may, at its option, levy and collect from the addressee, for inland service and delivery, a charge not exceeding twopence half-penny (or five cents) on each single parcel of whatever weight; and, if the weight exceed one pound, a charge equal to one half-penny (or one cent.) for each four ounces or fraction thereof.

If a parcel cannot be delivered as addressed, or is refused, the sender will be so advised; and, if no action is taken by him within three months, the parcel may be sold for the benefit of whom it may concern.

Any request that a parcel may be re-addressed or returned must be accompanied by the amount of postage at the original rate for its further pre-payment.

The Post Office Department of either of the contracting countries will not be responsible for the loss or damage of any package; and no indemnity can consequently be claimed by the sender or addressee in either country.

The following are the regulations and conditions with respect to the Parcel Post Exchange with Canada:—

A parcel may not exceed seven pounds in weight, two feet in length, and one foot in width or depth.

The postage on parcels *must* be prepaid by Postage Stamps.

All parcels will be subject to the Customs dues, laws and regulations in force in either country; and to each parcel must be affixed a "Customs declaration" containing an accurate statement of the contents and value thereof; the date of posting, and the sender's signature and address.

A parcel may *not* contain the following:—

I. A letter or the communication of the nature of personal correspondence.

II. Any other parcel intended for delivery at an address other than that borne by the parcel itself. If such enclosed parcel be detected it will be sent forward *simply* charged with new and distinct Parcel Post rates.

III. Any explosive, inflammable, or dangerous substance which may in any way damage or destroy other parcels, or the mails, or injure the persons handling them.

An undelivered parcel may be redirected to the sender in the country of origin on payment of a rate equal to that originally paid on it, such additional postage may either be paid in the country from which the parcel is returned or be collected from the sender on delivery.

Parcels which cannot be delivered to the persons to whom they are addressed, or the senders of which cannot be found, will be returned to the country of origin for disposal as undelivered, or "dead" matter.

The Post Office Department of either country will *not* be responsible for the loss or damage of any parcel.

The parcels must be securely and substantially packed.

The exchange of parcels will be effected by means of steamers subsidized by the Canadian government and conveying mails directly between ports in Canada and Jamaica.

Parcels received at Jamaica from places over sea under the Parcel Post arrangements with the Imperial Post Office are, in terms of the Post Office Law Amendment Law, 1886, opened at the Head Office, Kingston, for the purpose of the amount of import duty on the contents being assessed.

After such assessment the parcels are delivered as under, and the amount of duty collected in the same manner as the postage on unpaid or insufficiently prepaid Mail matter.

In Kingston if addressed to a place within the house delivery limit, by letter carrier; if beyond such limit, at the "Parcel Post Office, Blundell Hall."

In the country, across the Post Office counter; provided that such Post Office is a Mail Coach Office, an office on the line of Railway, or one at which the Coastal Steamer can deliver mails.

The amount of duty assessed on any such parcel must be paid before delivery, or before the delivery of the parcel from the custody of the Post Office; and, unless such duty be paid within fourteen days after the arrival of the parcel at the office of address the parcel will be liable to be sent to the Queen's Warehouse.

All complaints relating to Customs duty on parcels should be addressed to the Collector of Customs, Kingston, as the Post Office has not any control whatever in the matter of duty.

DIMENSIONS.

CLASS I.

Greatest length 3 feet 6 inches. Greatest girth and length combined 6 feet.

For Great Britain and Ireland, British Colonies and Possessions generally (except Canada); for Foreign Countries (except as stated in Classes III. and IV.); and for the United States of America.

CLASS II.

Greatest length 2 feet. Greatest depth or width 1 foot.

For Canada.

CLASS III.

Greatest length 2 feet. Greatest length and girth combined 4 feet.

French Colonies and Possessions, Annam, Argentine Republic, Austrian and French Postal Agencies in Turkey, Chili, Congo Free State, Italy, Maderia via France, Malta via Italy, Portugal via France, Spain, Tahiti.

CLASS IV.

Two feet in any direction.

Austria Hungary, Azores, Belgium, Bosnia, Bulgaria, Cameroons, Denmark, France, Germany, Greek Ports, Heligoland, Holland, Dutch East Indies, Luxemburg, Maderia via Portugal, Norway, Portugal (direct), Servia, Sweden, Switzerland.

PARCEL POST RATES.
TABLE OF POSTAGE OVER SEA.

Place of Destination.	Not exceeding in weight.			For each lb. after.	Up to 2 lbs.	Over 3 lbs. not exceeding 7 lbs.	Over 7 lbs. not exceeding 11 lbs.	Limit of Weight.	Remarks.
	lb. 1	lbs. 2	lbs. 3						
*Aden (including Berbera, Perim and Zaila) .	.	.	4/	.	.	6/6	9/	11 lbs.	A. Africa, West Coast of (including Bathurst, Cape Coast Castle, Sierra Leone, Quettah, Accra, Lagos).
Adrianople (see Turkey)	
Africa, West Coast of (A) .	.	.	2/	.	.	4/	6/	11	
" East Coast of, (see British and German East Africa.)	
*Algeria .	.	.	2/9	.	.	4/2	5/7	11	
*Annam .	.	.	5/	.	.	6/6	8/	11	B. Austrian and French Post Offices in Turkish Ports (including Alexandretta, Caïfa, Candia, Canee, Cavalla, Dardanelles, Dedeagh, Durazzo, Gallipoli, Ineboli, Jaffa, Kerasun, Lagos, Latakia, Leros, Mersina, Mytilene, Prevesa, Retino, Rhodes, Salonica, Samsoun, San Giovanni de-Medina, Santi Quaranta, Scio, Tenedos, Trebizond, Tripoli (Syria) Valona, Vathi).
Antigua .	.	.	1/	.	.	2/	3/	11	
*Argentine Republic .	.	.	3/4	.	.	5/7	7/10	11	
*Ascension .	.	.	2/	.	.	4/	6/	11	
*Australia (see respective Colonies) P. & O. Stm.	2/	.	.	1/6	.	.	.	11	
*Austria Hungary (not including Bosnia and Herzegovina) via Hamburg	.	.	2/6	.	.	4/	5/6	11	
*Austrian Post Offices in Turkish Ports (B) .	.	.	3/3	.	.	4/9	6/3	11	
*Azores via Lisbon .	.	.	3/5	.	.	4/10	6/3	11	
Baghdad (see India)	
Bahamas via United Kingdom	.	.	2/	.	.	4/	6/	11	
*Bank Islands .	2/1	.	.	1/7	.	.	.	11	
Barbados .	.	.	1/	.	.	2/	3/	11	
Basutoland (see Cape Colony)	
Batavia (see Dutch East Indies)	
Bethuanaland (same as Cape Colony)	
Bethuanaland Protectorate (same as Rhodesia)	
*Belgium .	.	.	2/3	.	.	3/8	5/2 1/2	11	
British Honduras via United Kingdom	.	.	2/	.	.	4/	6/	11	
Belize (direct) .	.	.	1/	.	.	2/	3/	11	
Bermuda .	.	.	1/	.	.	2/	3/	11	
*Beyrout .	.	.	2/	.	.	4/	6/	11	
Bohemia (see Austria)	

Note — In each case marked thus * refer to articles specially prohibited.

TABLE OF POSTAGE OVER SEA.—continued.

Place of Destination.	Not exceeding in Weight.			For each lb. after.	Up to 2 lbs.	Over 2 lbs. not exceeding 7 lbs.	Over 7 lbs. not exceeding 11 lbs.	Limit of Weight.	Remarks.
	lb. 1	lbs. 2	lbs. 3						
*Bolivia			5/2			6/7		7 lbs.	
Borneo (North)	1/11			1/8				11	
*Bosnia			2/9			4/8	5/9	11	
*Brazil, via Portugal			4/6			6/		6½	
British Central Africa	2/6			2/6				7	
British East Africa			2/			4/	6/	11	
*British Central Africa Protectorate			3/			5/	7/	11	
*British Guiana			1/			2/	3/	11	
*Bulgaria			3/6			5/		7	
*Burmah (see India)									
Cambodia (see Turkey)									
*Cameroons			3/3			4/9	5/3	11	
*Canada—									
{ Manitoba and North West Territories									
{ New Brunswick									
{ Nova Scotia									
* { Prince Edwards Islands and Province of Quebec	10d.			10d.				7	
{ Province of Ontario									
*Cape Colony	1/9			1/9				11	
Cape Verde Islands			3/5			4/10	6/8	11	
*Caroline, Marian and Palao Islands			4/			5/6	7/	11	
Cayenne (Conakry)			4/			5/6	7/	11	
Celebes (see Dutch East Indies)									
*Ceylon			2/			4/	6/	11	
Chili			4/9			6/2	7/7	11	
China, (see D.)			2/			4/	6/	11	
*Cochin China			5/			6/6	8/	11	
*Colombia, Republic of			3/			5/	7/	11	
Columbia (British) (see Canada)									
Comoro Islands (Grand Comoro, Johanna or Anjouan and Mayotte)			4/			5/6	7/	11	

Including Northern Rhodesia and embracing Abercorn, Fife, Kalunynici, Fort Jameson and Fort Young.

St. Vincent and Santiago

Note.—In each case marked * refer to List of Articles specially prohibited.

TABLE OF POSTAGE OVER SEA.—*continued.*

Place of Destination.	Not exceeding in Weight.			For each lb. after.	Up to 2 lbs.	Over 3 lbs., not exceeding 7 lbs.	Over 7 lbs., not exceeding 11 lbs.	Limit of Weight.	Remarks.
	lb. 1	lbs. 2	lbs. 3						
*Congo Free State	3/6	.	.	5/	6/6	11lbs.	Including Candia, Canoa and Retino.
Constantinople	2/	.	.	3/6	5/	11	
*Corsica	2/9	.	.	4/2	5/7	11	
*Costa Rica	3/4	.	.	5/10	8/6	11	
Crete (see Turkey)	
Curacao (see Dutch West Indies)	
*Cyprus	2/	.	.	4/	6/	11	
Dahomey (same as French Congo)	
Damaraland (see German South West Africa)	
*Danish West Indies (O)	6d.	.	.	6d.	.	.	.	11	G. Danish West Indies (including St. Thomas, St. John and St. Croix.)
*Demerara	1/	.	.	2/	3/	11	
*Denmark (including Faroe Islands)	.	.	2/6	.	.	4/	5/6	11	
*Diego Suarez (see Madagascar)	
Dominica (W.I.)	1/	.	.	2/	3/	11	
*Dutch East Indies	4/	.	.	5/6	7/	11	
Dutch Guiana	3/	.	.	5/	7/	11	Paramaribo and Nieuw Nickerie. Curaçao, St. Eustatius and St. Martin
Dutch West Indies	4/6	.	.	6/	7/6	11	
*Egypt { viâ Gibraltar {	.	.	2/	.	.	4/	6/	11	
Erithea Red Sea { viâ France and Italy {	.	.	3/	.	.	5/	7/	11	
.	4/	.	.	5/6	7/	11	
Falkland Island	2/	.	.	4/	6/	11	
Fiji	2/	.	.	1/8	.	.	.	11	
*Finland	3/3	.	.	4/9	6/3	11	
Formoso (same as Japan)	
*France	2/4	.	.	3/9	5/2	11	Libreville, Loango, &c.
French Congo	4/	.	.	5/6	7/	11	
*French Guiana (see Cayenne)	
*French Post Offices in Turkish Ports (see B)	.	.	3/3	.	.	4/9	6/3	11	

Note.—In each case marked thus * refer to articles specially prohibited.

TABLE OF POSTAGE OVER SEA.—continued.

Place of Destination.	Not exceeding in Weight.			For each lb. after.	Up to 2 lbs.	Over 2 lbs. not exceeding 7 lbs.	Over 7 lbs. not exceeding 11 lbs.	Limit of Weight.	Remarks.
	lb. 1	lbs. 2	lbs. 3						
Gaboon (see French Congo)	11 lbs.	
Gambia	.	.	2/	.	.	4/	6/	11	
*Germany (by sea) via Hamburg	.	.	2/	.	.	3/6	5/	11	
German East Africa	.	.	4/	.	.	5/6	7/	11	
German South West Africa	.	.	2/	.	.	4/	6/	11	
*Gibraltar	.	.	2/	.	.	4/	6/	11	
Gold Coast Colony	.	.	2/	.	.	4/	6/	11	
Grand Bassam (same as French Congo)	11	
*Great Britain and Ireland	.	.	1/	.	.	2/	3/	11	
*Greece via Brindisi	.	.	3/3	.	.	4/9	6/3	11	
*Grenada	.	.	1/	.	.	2/	3/	11	
*Guadeloupe	.	.	4/	.	.	5/6	7/	11	
*Guatemala	.	.	4/6	.	.	7/3	10/	11	
Hawaii	2/	.	.	2/	.	.	.	11	
*Heligoland	.	.	2/	.	.	3/6	5/	11	
*Herzegovina	.	.	2/9	.	.	4/3	5/9	11	
*Holland	.	.	2/	.	.	3/8	5/3	11	
*Honduras, Republic of, via Belize	.	.	3/	.	.	5/	7/	11	
*Hong Kong and places via Hong Kong (D)	.	.	2/	.	.	4/	6/	11	
Iceland (same as Denmark)	11	
*India and places via India (E)	2/	2/8	3/4	.	.	5/6	8/	11	
Italy (via Belgium, Germany and Switzerland)	.	.	3/3	.	.	5/9	6/3	11	
*Italy (via France (F)	.	.	2/6	.	.	4/	5/6	11	
Jahore via Singapore	.	.	2/	.	.	4/	6/	11	
*Janina	.	.	3/3	.	.	4/9	6/3	11	
Japan	.	.	2/10	.	.	5/6	8/2	11	
*Java	.	.	4/11	.	.	6/4	7/9	11	
*Jerusalem	.	.	3/3	.	.	4/9	6/3	11	

Notes.—In each case marked thus * refer to List of Articles specially prohibited.

D.
China (including Amoy, Canton, Foochow, Hankow, Hoihow, Macao, Ningpo, Shanghai, Swatow). *Parcels will also be accepted at Sender's risk for other places in China.*

E.
India (including Aden and Burmah; also following places on Persian Gulf and in Turkish Arabia, Baghdad, Bahrain, Bandar Abbas, Bushire, Busrah, Guadur, Jask, Linga and Muscat)

F.
Italy (including Assab and Massawah).

TABLE OF POSTAGE OVER SEA.—*continued.*

Place of Destination.	Not exceeding in Weight			For each lb. after.	Up to 2 lbs.	Over 3 lbs. not exceeding 7 lbs.	Over 7 lbs. not exceeding 11 lbs.	Limit of Weight.	Remarks.
	lb. 1	lbs. 2	lbs. 3						
Kiaochau (China)			4/			5/6	7/	11 lbs.	Including Peking, Tientsin, Tongkin.
Labuan	1/11	.	.	1/8	.	.	.	11	
Lagos	2/		.	4/	6/	11	
*Leeward Islands (see respective Colonies (G))	G. The Leeward Islands include Antigua, Dominica, Montserrat, Nevis, St. Kitt's, Virgin Islands, which include Anegada, Tortola, Virgin Gorda, etc.
Liberia	2/10	.	.	5/6	8/2	11	
*Little Popo (West Africa) and Lome (same as Cameroons.)	
*Luxemburg	2/3	.	.	3/8	5/	11	
Madagascar	4/	.	.	5/6	7/	11	
*Madeira	3/	.	.	4/6	6/	11	
*Malta via Gibraltar	2/	.	.	4/	6/	11	
Marshall Island	4/6	.	.	6/	7/6	11	
*Martinique	4/	.	.	5/6	7/	11	
Mashonaland (see Rhodesia)	
*Mauritius and Dependencies	2/	.	.	4/	6/	11	
*Mayotte (see Comoro Islands.)	
Mexico	2/	.	.	4/6	6/6	11	
Mignelon	3/	.	.	4/6	6/	11	
Moluccus (same as Dutch East Indies)	
Mombasa (see Br. East Africa)	
Monaco (see France)	Tangier.
Montenegro	3/3	.	.	4/9	6/3	11	
Montserrat	1/	.	.	2/	3/	11	
Morocco (Casablanca, Mazajan Mogador, &c.)	2/	.	.	4/	6/	11	
Muscat (see India)	
Mytiline (see Turkey)	
Morocco, German Agencies	3/3	.	.	4/9	6/3	11	
*Natal	1/9	.	.	1/9	.	.	.	11	
Netherland (see Holland)	11	
Nevis	1/	.	.	2/	3/	11	

Note.—In each case marked thus * refer to List of Articles specially prohibited.

TABLE OF POSTAGE OVER SEA.—continued.

Place of Destination.	Not exceeding in Weight.			For each lb. after.	Up to 2 lbs.	Over 3 lbs., not exceeding 7 lbs.	Over 7 lbs., not exceeding 11 lbs.	Limit of Weight.	Remarks.
	lb. 1	lbs. 2	lbs. 3						
Newfoundland	2/	.	.	4/	6/	11lbs.	
*New Caledonia	5/	.	.	6/6	8/	11	
New Guinea (Br.) (same as Queensland)	11	
New Guinea (German)	4/	.	.	5/6	7/	11	
*New Hebrides	2/1	.	.	1/7	.	.	.	11	
*New South Wales (including Norfolk Island).	2/	.	.	1/6	.	.	.	11	
*New Zealand	2/	.	.	4/	6/	11	
Niger Coast Protectorate and Nigeria	2/	.	.	4/	6/	11	
*Norway	2/	.	.	3/6	5/	11	
North Borneo	1/11	.	.	1/8	.	.	.	11	
*Nossi-Bé (see Madagascar)	
Nova Scotia (see Canada)	
*Novi Bazar	2/9	.	.	4/3	5/9	11	
Nyassaland (see British Central Africa)	
Obock (East Africa)	3/3	.	.	4/9	6/3	11	
Oil River (see Niger Coast Protectorate)	
*Orange River Colony	2/	.	.	2/	.	.	.	11	
Panama (same as Colombia)	
Paraguay	3/8	.	.	6/	.	7	
Persia (not including Indian P.O. Agencies of Bandar Abbas, Bushire, Jask and Linga)	5/4	6/	6/8	.	.	8/10	.	7	
*Peru via France and Germany	5/6	.	.	7/	8/6	11	
*Phillippopolis (see Bulgaria)	
*Portugal (by sea)	2/6	.	.	4/	5/6	11	
Portugal, via France	4/6	.	6½	
Portuguese West Africa	3/5	.	.	4/10	6/3	11	
Queensland	2/	.	.	1/6	.	.	.	11	
Raratonga (Cook Island) (same as Samoa)	
*Reunion	4/	.	.	5/6	7/	11	

Ambriz, Benguela, Bolama in Guinea, Cabinda, Loanda, Mossamedes and St. Thomas.

Note.—In each case marked * refer to List of Articles specially prohibited.

TABLE OF POSTAGE OVER SEA.—continued.

Place of Destination.	Not exceeding in Weight.			For each lb. after.	Up to 2 lbs.	Over 2 lbs. not exceeding 7 lbs.	Over 7 lbs. not exceeding 11 lbs.	Limit of Weight.	Remarks.
	lb. 1	lbs. 2	lbs. 3						
Rhodes (see Turkey)	See also British Central Africa.
Rhodesia	2/9	.	.	2/9	.	.	.	7 lbs.	
*Roumania	.	.	3/	.	.	4/6	6/	11	
Russia via Hamburg	.	.	3/	.	.	4/6	6/	11	
Russia via Belgium and Holland	.	.	3/3	.	.	4/9	6/3	11	
Salonica	.	.	3/	.	.	4/6	6/	11	
Salvador (Central America)	.	.	4/6	.	.	7/3	10/	11	
*Samoa (Apia) via New Zealand	.	.	5/	.	.	5/	7/	11	
Sandwich Islands (see Hawaii)	
Sarawak	.	.	2/	.	.	4/	6/	11	
Sardinia	
Sicily	
*Senegal	.	.	3/3	.	.	4/9	6/3	11	
*Serbia	.	.	3/	.	.	4/6	6/	11	
Seychelles	.	.	2/	.	.	4/	6/	11	
Siam (Bangkok, Chiengmai, Packnampoh, Nakhon, Sawan and Raheng only)	.	.	3/	.	.	5/	7/	11	
Sierra Leone	.	.	2/	.	.	4/	5/	11	H. Straits Settlement, (including Malacca, Penang, Province Wellesley and Singapore). Parcels will also be accepted at Sender's risk, for Johor, Perak, Selangor and Sungei Ujong in the Malayan Peninsula.
*Smyrna	.	.	2/	.	.	3/6	5/	11	
South African Republic (see Transvaal)	
*South Australia	2/	.	.	1/6	.	.	.	11	
*Spain	4/	.	6 1/2	
St. Croix (see St. Thomas)	7	
St. Eustatius (see Dutch West Indies)	
*St. Helena	.	.	2/	.	.	4/	6/	11	
St. John (same as St. Thomas)	
St. Kitts	.	.	1/	.	.	2/	3/	11	
St. Lucia	.	.	1/	.	.	2/	3/	11	
St. Martin (see Dutch West Indies)	
*Straits Settlements (H)	.	.	2/	.	.	4/	6/	11	
(If for H. M. Ships on China Station charge rate as to Hong Kong)	
St. Pierre, same as Miguelon	

Notes.—In each case marked thus * refer to List of Articles specially prohibited.

TABLE OF POSTAGE OVER SEA.—continued.

Place of Destination.	Not exceeding in Weight.			For each lb. after.	Up to 2 lbs.	Over 3 lbs. not exceeding 7 lbs.	Over 7 lbs. not exceeding 11 lbs.	Limit of Weight.	Remarks.
	lb. 1	lbs. 2	lbs. 3						
St. Thomas	6d.	.	.	6d.	.	.	.	lbs. 11	
St. Vincent (W.I.)	1/	.	.	2/	3/	11	
Santa Cruz Islands (same as New Hebrides)	
Sumatra, (see Dutch East Indies)	
*Sweden	2/2	.	.	4/3	5/11	11	
*Switzerland (via France)	2/6	.	.	4/	5/6	11	
Tahiti	6/6	.	.	8/	9/6	11	
*Tangier	2/	.	.	4/	6/	11	
*Tasmania	2/	.	.	1/6	.	.	.	11	
Tobago	1/	.	.	2/	3/	11	
Togo, same as Cameroons	
*Tonquin	5/	.	.	6/6	8/	11	
*Transvaal	2/	.	.	2/	.	.	.	11	
Trebisond (see Turkey)	
*Trinidad	1/	.	.	2/	3/	11	
*Tripoli (Africa)	2/9	.	.	4/8	5/9	11	
Tripoli (Syria) see Turkey	
Tristan D'Acunha, (same as St. Helena)	
*Tunis	3/8	.	.	4/8	6/1	11	
Turks Islands	1/	.	.	2/	3/	11	
Turkey, French and Austrian Post Offices	3/8	.	.	4/9	6/8	11	
Tsintan (China)	2/	.	.	4/	6/	11	
*United States of America	6d.	.	.	6d.	.	.	.	11	
Uruguay	3/	.	.	5/	7/	11	
Venezuela	4/8	.	.	6/1	7/6	11	
*Victoria (Australia)	2/	.	.	1/6	.	.	.	11	Venezuela includes Caracas, Compano, Ciudad, Bolivar, Cumana, La Guaira, La Vela de Coro, Maracalbo, Puerto Cabello.
Virgin Islands (Tortola, &c.)	1/	.	.	2/	3/	11	
*Western Australia	2/	.	.	1/6	.	.	.	11	
Windward Islands (see respective Colonies) (I)	The Windward Islands include: Grenada.) Grenadines.) St. Lucia. St. Vincent.
Zanzibar	2/	.	.	4/	6/	11	
Zululand, (same as Natal)	

Note.—In each case marked thus * refer to list of Articles specially prohibited.

CONDITIONS AND PROHIBITIONS IN DIFFERENT COUNTRIES.

1.—LETTERS.

The transmission of any letter whatsoever, no matter to whom addressed, in parcels for the Continent of Europe, Austrian and French Post Offices in Turkish Ports, the Cameroons, the Cape of Good Hope, Republic of Colombia, Congo-Free State, Costa Rica, Danish West Indies, Dutch East Indies, Egypt, French Colonies and Possessions, Natal, the Australian Colonies, Smyrna, Trinidad and Tunis, West Coast of Africa is *strictly forbidden*.

In Jamaica (*except to places stated*) if any letter or communication of the nature of personal correspondence be found in a parcel, and it can be separated therefrom, it will be forwarded to its destination surcharged at unpaid letter rates. But, if such letter, &c., can not be separated, the whole parcel will be liable to unpaid letter rates of postage.

Except that if a parcel addressed to any place in the *United States of America* be found to contain a communication of the nature of a letter it shall not be forwarded; but will be held at sender's risk.

2—OTHER PARCELS OR POSTAL PACKETS.

A parcel must not contain another parcel or other postal packet, intended for delivery at an address other than that borne on the parcel itself.

3—DANGEROUS ARTICLES, &c.

A parcel may not contain any dangerous or perishable article, any article likely to injure another parcel, any liquid (unless securely packed in a proper case), nor any article specially prohibited from importation into a particular country or place (See below).

II.—SPECIAL CONDITIONS.

ADEN. (Including Berbera and Zaila.)

Opium

ADRIANOPLE. (See Turkey.) (Parcels must be claimed at the Custom House, Constantinople.)

AFRICA, WEST COAST OF.—Nil.

ALGERIA.—Letters, counterfeit articles, foreign bronze coins, arms and ammunition of war, medicines (the components of which are not stated) parts of the vine, plants, bulbs, gold or silver articles, jewelry, lace.

ANIAM.—Letters, gold, silver, jewelry, &c.

ANTIGUA. (See Leeward Islands.)

ARGENTINE REPUBLIC.—Letters, articles of gold or silver or of exceptional value, vine plants.

ARSENION.—Gold (unless manufactured), Ostrich feathers, intoxicating liquors of all descriptions.

AUSTRALIA. (See several Colonies under their respective names.)

AUSTRIA-HUNGARY.—Letters, potatoes, &c., foreign lottery tickets, plants with roots.

AUSTRIAN AND FRENCH POST OFFICES IN TURKISH PORTS.—(Including Alexan. dretto, Caifa, Candia, Canee, Cavalla, Dardanelles, Dedeah, Durazzo, Gallipoli, Inéboli, Jaffa, Keresun, Lagon, Latakia, Leros, Mersina, Mytilene, Prevesa, Retino, Rhodes, Salonica,

Samsoun, San Giovanni-de-Medua, Santi Quaranta, Scio, Tenedos, Trebizond, Tripoli (Syria), Valona, Vathi, Adrianople, Janina, Jerusalem and Phillippolia.) Letters and articles of exceptional value.

AZORES. (See Portugal.)

BAGHDAD. (See India.)

BAHAMAS.—Nil.

BARBADOS.—Nil.

BASUTOLAND. (See Cape Colony.)

BATAVIA. (See Dutch East Indies.)

BECHUANALAND.—Same as Cape Colony.

BECHUANALAND PROTECTORATE.—Same as Rhodesia.

BELGIUM.—Letters, plants, fresh-meat, rags, shoddy, airguns, poignards, bayonets, sword-sticks, pistols and revolvers of small calibre, foreign bronzes, copper, or nickle coins.

BELIZE. (See British Honduras.)

BERMUDA.—Nil.

BEYROUT.—Letters, fire-arms, tobacco, except cigars and snuff, salt and plants

BOHEMIA. (See Austria.)

BORNEO. (See North Borneo.)

BOSNIA.—Letters, potatoes, pork, bacon, &c., foreign lottery tickets, plants.

BRITISH CENTRAL AFRICA.—Letters.

BRITISH COLUMBIA. (See Canada.)

BRITISH EAST AFRICA.—Poisonous drugs.

BRITISH GUIANA.—Spirits, opium, ganja, charas, bhang, cannabis-indica, parts

SPECIAL CONDITIONS, *contd.*

- of dutiable articles except by permission of the Governor.
- BRITISH HONDURAS.**—Nil.
- BULGARIA.**—Letters, worn-out clothes and boots intended for sale, plants, vegetables, flowers, grapes, parts of the vine, copper and silver coins, arms and ammunition, lottery tickets, cotton and geranium oil, wax candles, dyes and poisonous drugs can only be imported under special conditions to be ascertained in Bulgaria.
- BURMAH.** (See India.)
- CAMBODIA.** Same as Cochin China.
- CAMEROONS.**—Letters and plants.
- CANADA.**—Oleomargarine, butterine, and similar substitutes for butter.
- CANDIA.** (See Turkey.)
- CAPE COLONY.** (Including British Buchananaland.)—Letters, specie, bullion, gold dust, nuggets, Ostrich feathers, fruit, plants, parts of plants, bulbs, and cuttings of trees, tobacco stalks, essences of tea, coffee, chicory, tobacco, parts of the vine, stone-fruit trees, unless accompanied by a sworn declaration that they have not come from the United States of America or Canada.
- CAPE VERDE ISLANDS.**—Letters.
- CAYENNE (Conakry).**—Letters, gold, silver, jewelry, &c.
- CEYLON.**—Arms and ammunition by way of merchandise; parts sent separately of articles which are liable to Customs duty.
- CHILI.**—Letters, plants, arms and implements of war, articles injurious to health, and, *via* France, gold, silver, jewelry, &c.
- CHINA.** (Amoy, 'anton, Foochow, Hankow, Hoihow, Macao, Ningpo, Shanghai, Swatow.) Opium.
- COCHIN CHINA.**—Letters, gold, silver, jewelry, &c.
- COLOMBIA, REPUBLIC OF.**—Letters, arms, ammunition.
- CONGO FREE STATE.**—Letters.
- CONSTANTINOPLE.**—Fire-arms, tobacco (except cigars or snuff), salt. Medicine must be accompanied by the prescription.
- CORSICA.** Same as to France with the addition of articles of gold, silver, jewelry, &c.
- COSTA RICA.**—Letters, arms, ammunition.
- CYPRUS.** (Candia, Canea and Retimor.) (See Turkey.)
- CUBACOA.** (See Dutch West Indies.)
- CYPRUS.**—Locust eggs, salt, silver and copper coins.
- DAHOMY.** Same as French Congo.
- DAMABALAND.** (See German South-west Africa.)
- DANISH WEST INDIES.** (Including St. Thomas, St. John and St. Croix.) Letters
- DEMEREBA.** (See British Guiana.)
- DENMARK.**—Letters, foreign lottery tickets and prospectuses, imitations of money, notes, or bills, potatoes, almanacks.
- DIEGO SUAREZ.** (See Madagascar.)
- DOMINICA.** (See Leeward Islands.)
- DUTCH EAST INDIES.**—Letters, opium, arms and salt (except fine table salt), coffee, plants or seeds.
- DUTCH GUIANA.**—Letters.
- DUTCH WEST INDIES.**—Letters.
- EGYPT.**—Letters, military arms (unless addressed to members of the British Army), materials for the composition of gunpowder, salt, poisons (unless addressed to chemists or druggists), foreign silver and copper coins, books of the Mussulman religion, and (*via* France and Italy) tobacco, plants, pork, bacon, sausages, &c.
- ERITHREA, RED SEA.** Same as Italy.
- FALKLAND ISLANDS.**—Nil.
- FAROE ISLANDS.** (See Denmark.)
- FIJI.**—Letters.
- FINLAND.**—Letters, brandy, guns, sword-sticks, &c., playing cards, Finnish and Russian silver or copper coins, Church effects, ether, skin and fur of sea otters.
- FRANCE.** (Not including Algeria or Corsica.) Letters, secret and forbidden arms, ammunition, game out of season (grouse not included), foreign bronze coin, tobacco unless addressed to the "Regie" or in limited quantities for the personal use of the addressee, essence of tobacco, playing cards, shrubs, young trees, parts of the vine. Medicine is subject to special restrictions; gold must be at least 18 carat, and silver must be up to the French standard.
- FRENCH CONGO.**—Letters, arms, gold, silver, jewelry, &c.
- FRENCH POST OFFICES IN TURKISH PORTS.**—Letters.
- FRENCH GUIANA.** (See Cayenne.) Letters, gold, silver, jewelry, &c.
- GABOON.** (See French Congo.)
- GAMBIA.**—Nil.

SPECIAL CONDITIONS, *contd.*

GERMAN EAST AFRICA.—Letters.

GERMAN SOUTH-WEST AFRICA.—Letters.
GOLD COAST COLONY.—Nil.

GRAND BASSAM. Same as French Congo.

GERMANY.—Letters, plants with roots, all parts of the vine plant (except grapes), books of a social democratic or socialistic tendency.

GIBRALTAR.—Arms, ammunition.

GREAT BRITAIN AND IRELAND.—Foreign reprints of British registered copy-right works; false money, counterfeit sterling and British silver coin below standard; indecent or obscene articles, inclusive of prints, photographs, &c., tobacco stalks; clocks, watches and metals generally, bearing imitations of British-assay mark or stamps; extracts, essences or concentration of coffee, chicory, tea, and tobacco may not be imported for home consumption. Tobacco (inclusive of cigars and snuff) in small packages such as could be contained in a postal parcel; but they will be admitted, provided they are bona fide for the consumption of the addressee, or in small quantities for use as trade samples. Foreign or Colonial manufactures bearing the names, addresses or trade-marks of British manufacturers, unless imported with their consent, are also restricted. There are also restrictions on spirits unless in bottle. Saccharin or other substances of a similar nature or use. Coin, or bullion exceeding five pounds in value, but parcels containing coin which is clearly designed for purposes of ornament are admissible. All customs prohibitions and restrictions apply equally to the importations from any British colony or possession or Foreign country.

GREECE.—Letters, tobacco, fresh meat, sausages, raw hides, wool, the horns, bones, or other parts of oxen or sheep, plants and parts of plants, including flowers and fruit, worn out linen and bedding, old clothes, rags, old papers, playing cards, salt, and cigarette paper, gold, silver, jewelry, &c. (See Italy for articles which cannot be sent through that country.)

GUENADA.—Unmanufactured tobacco.

GUADELOUPE.—Letters, gold, silver, jewelry, &c.

HAWAII.—Letters, opium.

HELGOLAND. Same as Germany.

HERZEGOVINA. Same as Bosnia.

HONDURAS.—Letters.

HOLLAND.—Letters, fresh meat, pork, bacon, sausages, hides, horns, living plants, fat of animals.

HONG KONG. (Including Amoy, Canton, Fouchow, Hankow, Hoihow, Macao, Ningpo, Shanghai, Swatow.) *Parcels will also be accepted but at Sender's risk for other places in China.* Opium.

ICELAND. Same as Denmark.

INDIA. (Including the Andaman Islands and Burmah, also the following places on the Persian Gulf and in Turkish Arabia; Baghdad, Bahrain, Bandar Abbas, Bushire, Busrah, Guadur, Jask, Linga, Muscat and Mohammerah.) Opium. To Burma—fire-arms and ammunition (except for the Government), preparation of hemp. To Baghdad or Busrah—worn clothes, arms, ammunition, poison, and caricatures of royal or other notable persons.

ITALY. (Including Assab and Massawah.) Letters, tobacco, salt, pork in any form, bacon, sausages, plants, or living parts of plants including bulbs, truffles, mushrooms, &c. (except cut flowers and fruit from 1st November to 31st May), vegetable manure, game, from 1st January to 1st September, playing cards addressed to S. Marino, arms, medicine or other chemical compounds without the express previous permission of the Italian authorities, saccharine and its products, fresh meat, parcels addressed to persons condemned to hard labour, or to soldiers in military prisons; copper coins not current in Italy, measures not of the decimal system, medicines if accompanied by the prescriptions which must be copied on the Customs declaration form, is forwarded at sender's risk.

JANINA. (See Turkey.)

JAPAN.—Letters, opium (not including laudanum).

JAVA.—Letters, opium, arms, salt (except fine table salt), coffee plants or seeds.

JEDDAH.—Letters, arms, salt, tobacco, plants and parts of plants, hachich.

JERUSALEM. (See Turkey.)

LABUAN.—Nil.

LAGOS, AFRICA.—Nil.

LAGOS, TURKEY. (See Turkey.)

LEEWARD ISLANDS.—Nil.

LIBERIA.—Letters.

SPECIAL CONDITIONS, *contd.*

- LITTLE POPO AND LOME.** (See Cameroons.)
- LUXEMBURGH** (Grand Duchy of.) Letters.
- MADAGASCAR.**—Letters, arms, articles of gold, silver, jewelry, &c.
- MADIRA.** (See Portugal.)
- MALTA.**—Letters, articles of gold, silver, jewelry, &c., tobacco, salt, pork, bacon, plants, or parts of plants except fresh cut flowers from 1st November to 31st May.
- MARTINIQUE.**—Letters, articles of gold, silver, jewelry, &c.
- MASHONALAND.** (See Rhodesia.)
- MAURITIUS.**—Letters, worn clothes, &c., if intended for sale, and (via France only) articles of gold or silver jewelry, &c.
- MAYOTTE.**—Letters, articles of gold, silver, jewelry, &c.
- MEXICO.**—Letters, liquids and substances which easily liquify, fruit, vegetables, money in any form, precious stones, poisons, tickets, circulars or advertisements of lotteries.
- MIQUELAN.**—Letters.
- MOLUCCAS.** (See Dutch East Indies.)
- MOMBASA.** (See British East Africa.)
- MONACO.** Same as France.
- MONTENEGRO.**—Letters, very fragile articles, tobacco, salt.
- MONTSERRAT** (See Leeward Islands.)
- MOROCCO.**—Letters, &c., and, via France, gold, silver, jewelry, &c.
- MUSCAT.** (See India.)
- MYTILENE.** (See Turkey.)
- NATAL.**—Letters, specie, bullion, gold dust, nuggets, Ostrich feathers, firearms except by permission of the Governor.
- NETHERLANDS.** (See Holland.)
- NEVIS.** (See Leeward Islands.)
- NEW CALEDONIA.**—Letters, gold, silver, jewellery, &c.
- NEWFOUNDLAND.**—Nil.
- NEW GUINEA, BRITISH.** Same as Queensland.
- NEW GUINEA, GERMAN.**—Letters.
- NEW HEBRIDES.**—Letters, tobacco in any form, opium.
- NEW SOUTH WALES.** (Including Norfolk Island).—Letters, tobacco in any form (except samples addressed to a manufacturer or dealer), opium.
- NEW ZEALAND.**—Letters, vine cuttings, grapes, tobacco in any form.
- NIGER COAST PROTECTORATE.**—Breech loading guns.
- NORWAY.**—Letters.
- NORTH BORNEO.** (The territory of the British North Borneo Company, not including Sarawak).—Tobacco and opium.
- NOSSIBE.** (See Madagascar.)
- NOVA SCOTIA.** (See Canada.)
- NOVI BAZAR.** Same as Bosnia.
- NYASSALAND.** (See British Central Africa.)
- OBOCK (EAST AFRICA).**—Letters, arms, gold, silver, jewelry, &c.
- OIL RIVERS.** (See Niger Coast Protectorate.)
- ORANGE FREE STATE.** (See Cape Colony.)
- PANAMA.** Same as Columbia.
- PARAGUAY.**—Letters, articles of gold and silver, jewelry, &c., corrosive fluids.
- PERSIA.**—Letters.
- PERU.**—Letters, corrosive liquids, guns, swords, pistols or other instruments of war.
- PHILIPPOPOLIS.**—Same as Bulgaria.
- PORTUGAL.**—Letters, silver money, tobacco, parts of the vine (except grapes without leaves), plants, postage stamps or other stamps or stamped paper not obliterated, paper money payable to bearer; medicine (unless accompanied by the prescription) and (via France), gold, silver, jewelry, &c. A parcel may not consist of two or more packages tied together.
- PORTUGUESE WEST AFRICA.**—Letters.
- QUEENSLAND.**—Letters, tobacco in any form (unless for the personal use of the addressee) spirits (except perfumed or medicinal spirits), opium, grapes, vine cuttings, coffee plants or seeds.
- RARATONGA (COOK ISLANDS).**—Same as Samoa, via New Zealand.
- REUNION.**—Letters, gold, silver, jewellery, &c.
- RHODES.** (See Turkey.)
- RHODESIA.** Same as Cape Colony.
- ROUMANIA.**—Letters, tobacco in any form, plants or parts of plants, except seeds and dried roots, arms, ammunition, playing cards, salt, Roumanian bronze money, rags, cotton waste, &c., patent medicines, special pharmaceutical preparations.
- ST. OLOIX.**—Same as St. Helena.
- ST. EUSTATIUS.** (See Dutch West Indies.)
- ST. HELENA.**—Ostrich feathers, Cape

SPECIAL CONDITIONS, *contd.*

- brandy, arrack, Bengal rum, aqua-ardente, gold (unless manufactured).
- ST. KITT'S. (See Leeward Islands.)
- ST. LUCIA. (See Windward Islands.)
- ST. MARTIN'S. (See Dutch West Indies.)
- ST. PIERRE. Same as Miquilon.
- ST. THOMAS.—Letters.
- ST. VINCENT. (See Windward Islands.)
- SALONICA. (See Turkey.)
- SALVADOR (CENTRAL AMERICA).—Letters, arms, air-guns, nitrate of potash, saltpetre, apparatus for coining money.
- SAMOA (APIA).—Letters.
- SANDWICH ISLANDS. (See Hawaii.)
- SARAWAK.—Nil.
- SARDINIA. (See Italy.)
- SENEGAL.—Letters, arms, gold, silver, jewellery, &c.
- SERBIA.—Letters, parts of the vine.
- SEYCHELLES.—Letters, worn clothes, &c if intended for sale.
- SIAM.—Letters, arms, opium.
- SICILY. (See Italy.)
- SIERRA LEONE.—Nil.
- SMYRNA.—Letters, fire-arms, tobacco (except cigars or snuff), salt, plants, sword-sticks, materials for the composition of gunpowder, books unfavourable to the Ottoman Government.
- SOUTH AFRICAN REPUBLIC. (See Transvaal.)
- SOUTH AUSTRALIA.—Letters, vine cuttings.
- SPAIN.—Letters, fire-arms and ammunition, air-guns, reproduction of Spanish maps or plans, missals, breviaries, rosaries, relics, &c., plants, gold, silver, jewellery, &c.
- STRAITS SETTLEMENTS. (Malacca, Penang, Province Wellesley and Singapore).—*Parcels will also be accepted at Sender's risk, for Johor, Negri Sembilan, Pahang, Perak, Selangor and Sungie Ujong, in the Malayan Peninsula.*—Letters, Opium, spirits.
- SUMATRA (DUTCH). (See Dutch East Indies.)
- SWEDEN.—Letters, rags, shoddy, worn clothes (unless for the personal use of the addressee his family, or servants), manufactured gold and silver not of a certain degree of fineness, drugs and arsenic, unless addressed to professional men, articles made abroad bearing Swedish marks.
- SWITZERLAND.—Letters, newspapers intended for sale or distribution, unless addressed to a Post Office, plants with roots, alcohol, spirits of wine, meat (unless dried, smoked or tinned) bacon, sausages, also grapes to the cantons of Valais and Vaud.
- TAHITI.—Letters, gold, silver, jewellery, &c.
- TANGIER.—Letters, arms, ammunition, opium, sulphur, saltpetre, lead.
- TASMANIA.—Letters, tobacco (except in quantities not exceeding 5lb. for the personal use of the addressee, or as *bona fide* samples).
- TOBAGO.—Nil.
- TOGO. Same as Cameroons.
- TONQUIN.—Letters, gold, silver, jewelry, &c.
- TORTOLA. (See Leeward Islands.)
- TRANVAAL.—Letters, money, in addition to the articles inadmissible to the Cape Colony or Natal.
- TREBIZOND. (See Turkey.)
- TRINIDAD.—Letters, parts of dutiable articles, rum, all other spirits except perfumed or medicinal spirits, gunga, bhang, cannabis-indica, opium.
- TRESTAN (D'ACUNHA). Same as St. Helena.
- TUNIS AND TRIPOLI (AFRICA).—Letters, arms and ammunition of war, nitrate of soda, saltpetre, sulphur, salt, tobacco plants, parts of the vine, fresh vegetables, gold and silver articles, jewelry, lace, kif, chira, nachid.
- TRIPOLI (SYRIA). (See Turkey.)
- TURKS ISLAND.—Letters.
- TURKEY.—(French and Austrian Agencies in Turkey.) Letters, tobacco (except cigars or snuff), plants, gold, silver, jewelry, &c.
- UNITED STATES OF AMERICA.—Letters, post cards and written matter of the nature of personal correspondence. (See Prohibitions.) Publications which violate the copyright laws of the country of destination, poisons and explosive or inflammable substances, fatty substances, liquids and those which easily liquefy, confectations and pastes, live or dead animals, (except dead insects and reptiles when thoroughly dried; and live bees put up in wooden boxes with wire screens and moveable lids;) fruits and vegetables, and substances which exhale a bad odour, lottery tickets, lottery advertisements or lottery circulars, all obscene or immoral articles, articles which may in any way damage

SPECIAL CONDITIONS, *contd.*

or destroy the mails or injure the persons handling them.

URUGUAY.—Letters, liquids or semi-liquids, lottery tickets, orchilla or litmus and its derivatives, plants or living parts of plants, grapes, game; and via France, gold, silver, jewelry, &c.

VENEZUELA.—Letters, cocoanut oil, brandy, cotton, starch, indigo, sugar, honey, salt meat, match-sticks, salt, sarapilla, coins, dies for coining,

ous, lead, saltpetre; and (via France) gold, silver, jewelry, &c.

VICTORIA (AUSTRALIA).—Letters, coin, opium, spirits (except perfumed or medicinal spirits or bona fide samples), vines or vine cuttings.

WESTERN AUSTRALIA.—Letters, coin, gold or silver bullion, apples, pears, quinces.

WINDWARD ISLANDS. Nil. *Except Grenada (which see).*

ZANZIBAR.—Opium.

ZULULAND. Same as Natal.

POST OFFICE TELEGRAPHS.

The Government Telegraphs are under the control of the Postmaster-General. And the Telegraph Offices, except in Kingston, are in the same buildings as the Post Offices.

The charge for telegrams throughout Jamaica is one shilling (1s.) for the first twenty words and threepence (3d.) for every additional five words, *i.e.*, for every additional group of not more than five words, the names and addresses of the Sender and Receiver not being counted.

If the Addressee reside within one mile of the terminal office the telegram is delivered by messenger without any additional charge; but if beyond that limit the following portorage fee must be prepaid:—

- a. If the whole distance be under three miles at a charge of sixpence (6d.) per mile, counting from boundary of the free delivery.
- b. If the distance be over three miles at a charge of one shilling (1s.) per mile, counting from the office.

The charges for the transmission and for portorage of telegrams must be pre-paid by means of adhesive stamps which are procurable at each station, of which there are two denominations, *viz.*, 1s. and 3d. Books containing twenty message forms, each form being embossed with a stamp of the face value of 1s., may also be purchased at the head station and other principal district stations at the rate of 20s. 3d. These books are prepared for use with carbonic ink paper, so that copies of the messages can be retained.

Persons resident at a place to which the Island Telegraph Line has not yet been extended can benefit by its use on the following conditions:—

1. If the words "By Post" with the name of a telegraph station be written on a message it will be wired to such station and forwarded from thence to its postal address by first post.
2. If a letter marked "On Post Office Telegraph Business" be sent *by post* to the Telegraph Clerk at any station the message enclosed will be promptly forwarded *by wire* from such station. In this case the letter by post must be registered and the cost of the message enclosed in telegraph stamps or coin.
3. No charge will be made in either case for postage or registration.

Under an arrangement with the West India and Panama Telegraph Company telegrams addressed to the United Kingdom or to any Foreign Place with which there is telegraphic communication are accepted at any Telegraph Station in Jamaica on payment of the inland rate, in addition to the amount charged by the Cable Company, which may be ascertained by application at each station; such payment must be made in *cash*.

Return messages from places abroad will be delivered as addressed, subject to the charge for portorage, if any, and to any other claim for conveyance.

The office hours of the Telegraph Department are from 7 a.m. to 5 p.m., daily—Sundays excepted.

TABLE OF POSTAGE OVER SEA.—continued.

Place of Destination.	Not exceeding in Weight			For each lb. after.	Up to 2 lbs.	Over 2 lbs. not exceeding 7 lbs.	Over 7 lbs. not exceeding 11 lbs.	Limit of Weight.	Remarks.
	lb. 1	lbs. 2	lbs. 3						
Kiaochau (China)	.	.	4/	.	.	5/6	7/	11 lbs.	Including Peking, Tientsin, Tongkin.
Labuan	1/11	.	.	1/8	.	.	.	11	
Lagos	.	.	2/	.	.	4/	6/	11	
*Leeward Islands (see respective Colonies (G))	G. The Leeward Islands include Antigua, Dominica, Montserrat, Nevis, St. Kitt's, Virgin Islands, which include Anegada, Tortola, Virgin Gorda, etc.
Liberia	.	.	2/10	.	.	5/6	8/2	11	
*Little Popo (West Africa) and Lome (same as Cameroons.)	
*Luxemburg	.	.	2/3	.	.	3/8	5/	11	
Madagascar	.	.	4/	.	.	5/6	7/	11	
*Madeira	.	.	3/	.	.	4/6	6/	11	
*Malta via Gibraltar	.	.	2/	.	.	4/	6/	11	
Marshall Island	.	.	4/6	.	.	6/	7/6	11	
*Martinique	.	.	4/	.	.	5/6	7/	11	
Mashonaland (see Rhodesia)	
*Mauritius and Dependencies	.	.	2/	.	.	4/	6/	11	
*Mayotte (see Comoro Islands.)	
Mexico	.	.	2/	.	.	4/6	6/6	11	
Miguelon	.	.	3/	.	.	4/6	6/	11	
Moluccus (same as Dutch East Indies)	
Mombasa (see Br. East Africa)	
Monaco (see France)	
Montenegro	.	.	3/3	.	.	4/9	6/3	11	
Montserrat	.	.	1/	.	.	2/	3/	11	
Morocco (Casablanca, Mazajan Mogador, &c.)	.	.	2/	.	.	4/	6/	11	
Muscat (see India)	Tangier.
Mytiline (see Turkey)	
Morocco, German Agencies	.	.	3/3	.	.	4/9	6/3	11	
*Natal	1/9	.	.	1/9	.	.	.	11	
Netherland (see Holland)	
Nevis	.	.	1/	.	.	2/	3/	11	

Note.—In each case marked thus * refer to List of Articles specially prohibited.

TABLE OF POSTAGE OVER SEA.—continued.

Place of Destination.	Not exceeding in Weight.			For each lb. after.	Up to 2 lbs.	Over 3 lbs., not exceeding 7 lbs.	Over 7 lbs., not exceeding 11 lbs.	Limit of Weight.	Remarks.
	lb. 1	lbs. 2	lbs. 3						
Newfoundland	2/	.	.	4/	6/	11lbs.	
*New Caledonia	5/	.	.	6/6	8/	11	
New Guinea (Br.) (same as Queensland)	
New Guinea (German)	4/	.	.	5/6	7/	11	
*New Hebrides	2/1	.	.	1/7	.	.	.	11	
*New South Wales (including Norfolk Island)	2/	.	.	1/6	.	.	.	11	
*New Zealand	2/	.	.	4/	6/	11	
Niger Coast Protectorate and Nigeria	2/	.	.	4/	6/	11	
*Norway	2/	.	.	3/6	5/	11	
North Borneo	1/11	.	.	1/8	.	.	.	11	
*Nossi-Bé (see Madagascar)	
Nova Scotia (see Canada)	
*Novi Bazar	2/9	.	.	4/3	5/9	11	
Nyassaland (see British Central Africa)	
Obock (East Africa)	3/3	.	.	4/9	6/3	11	
Oil River (see Niger Coast Protectorate)	
*Orange River Colony	2/	.	.	2/	.	.	.	11	
Panama (same as Colombia)	
Paraguay	3/8	.	.	6/	.	7	
Persia (not including Indian P.O. Agencies of Bandar Abbas, Bushire, Jask and Linga)	5/4	6/	6/8	.	.	8/10	.	7	
*Peru via France and Germany	5/6	.	.	7/	8/6	11	
*Philippopolis (see Bulgaria)	
*Portugal (by sea)	2/6	.	.	4/	5/6	11	
Portugal, via France	4/6	.	6 1/2	
Portuguese West Africa	3/5	.	.	4/10	6/3	11	
Queensland	2/	.	.	1/6	.	.	.	11	
Raratonga (Cook Island) (same as Samoa)	
*Reunion	4/	.	.	5/6	7/	11	

Ambriz, Benguela, Bolama in Guinea, Cabinda, Loanda, Mossamedes and St. Thomas.

Note.—In each case marked * refer to List of Articles specially prohibited.

TABLE OF POSTAGE OVER SEA.—continued.

Place of Destination.	Not exceeding in Weight.			For each lb. after.	Up to 2 lbs.	Over 3 lbs. not exceeding 7 lbs.	Over 7 lbs. not exceeding 11 lbs.	Limit of Weight.	Remarks.
	lb. 1	lbs. 2	lbs. 3						
Rhodes (see Turkey)	See also British Central Africa.
Rhodesia	2/9	.	.	2/9	.	.	.	7 lbs.	
*Roumania	.	.	3/	.	.	4/6	6/	11	
Russia via Hamburg	.	.	3/	.	.	4/6	6/	11	
Russia via Belgium and Holland	.	.	3/3	.	.	4/9	6/3	11	
Salonica	.	.	3/	.	.	4/6	6/	11	
Salvador (Central America)	.	.	4/6	.	.	7/3	10/	11	
*Samoa (Apia) via New Zealand	.	.	3/	.	.	5/	7/	11	
Sandwich Islands (see Hawaii)	
Sarawak	.	.	2/	.	.	4/	6/	11	
Sardinia	} see Italy—			H. Straits Settlement, (including Malacca, Penang, Province Wellesley and Singapore). Parcels will also be accepted at Sender's risk, for Johor, Perak, Selangor and Sungei Ujong in the Malayan Peninsula.
Sicily				
*Senegal	.	.	3/3	.	.	4/9	6/3	11	
*Servia	.	.	3/	.	.	4/6	6/	11	
Seychelles	.	.	2/	.	.	4/	6/	11	
Siam (Bangkok, Chiengmai, Packnampoh, Nakhon, Sawan and Raheng only)	.	.	3/	.	.	5/	7/	11	
Sierra Leone	.	.	2/	.	.	4/	5/	11	
*Smyrna	.	.	2/	.	.	3/6	5/	11	
South African Republic (see Transvaal)	
*South Australia	2/	.	.	1/6	.	.	.	11	
*Spain	4/	.	6 1/2	
St. Croix (see St. Thomas)	7	
St. Eustatius (see Dutch West Indies)	
*St. Helena	.	.	2/	.	.	4/	6/	11	
St. John (same as St. Thomas)	
St. Kitts	.	.	1/	.	.	2/	3/	11	
St. Lucia	.	.	1/	.	.	2/	3/	11	
St. Martin (see Dutch West Indies)	
*Straits Settlements (H)	.	.	2/	.	.	4/	6/	11	
(If for H. M. Ships on China Station charge rate as to Hong Kong)	
St. Pierre, same as Miguelon	

Note.—In each case marked thus * refer to List of Articles specially prohibited.

TABLE OF POSTAGE OVER SEA.—continued.

Place of Destination.	Not exceeding in Weight.			For each lb. after.	Up to 2 lbs.	Over 3 lbs. not exceeding 7 lbs.	Over 7 lbs. not exceeding 11 lbs.	Limit of Weight	Remarks.
	lb. 1	lbs. 2	lbs. 3						
St. Thomas	6d.	.	.	6d.	.	.	.	lbs. 11	
St. Vincent (W.I.)	1/	.	.	2/	3/	11	
Santa Cruz Islands (same as New Hebrides)	
Sumatra, (see Dutch East Indies)	4/3	5/11	11	
*Sweden	2/2	.	.	4/	5/6	11	
*Switzerland (via France)	2/6	.	.	8/	9/6	11	
Tahiti	6/6	.	.	4/	6/	11	
*Tangier	2/	11	
*Tasmania	2/	.	.	1/6	.	.	.	11	
Tobago	1/	.	.	2/	3/	11	
Togo, same as Cameroons	6/6	8/	11	
*Tonquin	5/	11	
*Transvaal	2/	.	.	2/	.	.	.	11	
Trebisond (see Turkey)	2/	3/	11	
*Trinidad	1/	.	.	4/3	5/9	11	
*Tripoli (Africa)	2/9	
Tripoli (Syria) see Turkey	
Tristan D'Acunha, (same as St. Helena)	
*Tunis	3/3	.	.	4/8	6/1	11	
Turks Islands	1/	.	.	2/	3/	11	
Turkey, French and Austrian Post Offices	3/3	.	.	4/9	6/3	11	
Tsintan (China)	2/	.	.	4/	6/	11	
*United States of America	6d.	.	.	6d.	.	.	.	11	
Uruguay	3/	.	.	5/	7/	11	
Venezuela	4/3	.	.	6/1	7/6	11	
*Victoria (Australia)	2/	.	.	1/6	.	.	.	11	Venezuela includes Caracas, Compano, Guad, Bolivar, Cumana, La Guaira, La Vela de Coro, Maracalbo, Puerto Cabello.
Virgin Islands (Tortola, &c.)	1/	.	.	2/	3/	11	
*Western Australia	2/	.	.	1/6	.	.	.	11	
Windward Islands (see respective Colonies) (I)	The Windward Islands include: Grenada.) Grenadines.) St. Lucia. St. Vincent.
Zanzibar	2/	.	.	4/	6/	11	
Zululand, (same as Natal)	

Note.—In each case marked thus * refer to List of Articles specially prohibited.