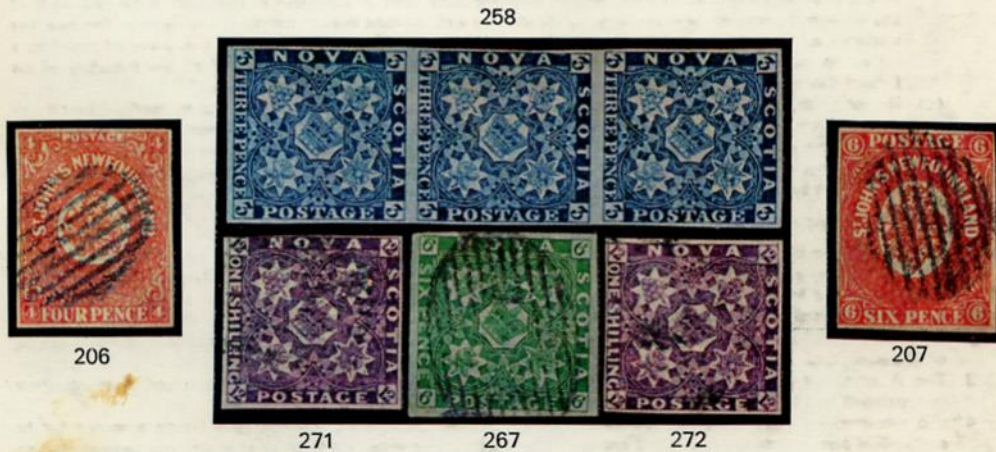


BNA BWI

including Falkland Islands



TUESDAY 4th MARCH 1980 at 10.00 and 14.30 hrs.
WEDNESDAY 5th MARCH 1980 at 10.00 hrs.



VENDORS CATALOGUE



ROBSON LOWE LTD.
50 PALL MALL
LONDON SW1Y 5JZ



Sale Nos. 4486-4488

ISBN 0 85397 124 2

Catalogue £1

19800304 Robson Lowe

Image	Lot	Jamaica	Est	Real
	605	1870-83 CC, 1d. and 5/- (small mark on face), cut-down die proofs in black on glazed cards, the latter dated "26/6/74" in pencil on reverse	£30	52.00
	606	1883-97 1d. rose, block of twelve (3x4). fine mint	£125	135.00
Photo	607	1883-97 1/- brown. variety "\$" for "S" in "SHILLING", faint crease and tiny tear at top. used.	£75	140.00
	608	1890 2½d. on 4d. red-brown, two used examples (the former on small piece) both showing "PFNNY" for "PENNY" and the latter (two stained perfs. at foot) additionally broken "K" for "Y"	£45	65.00
	609T	1891 2½d. die proof in black of the design without value, cut down to stamp size (apart from 4½ mm. margin at foot initialed "GNA"). dated "16/6/90" in pencil on reverse, and similar die proof for the value tablet with manuscript "Jamaica" above affixed to piece marked "60 Leads Jan 8 th "	£50	48.00
	610	1903.04 CA, ½d. to 5d. and 1905-11 Arms type. ½d. 1d. 2½d. (3). 5d. 6d. and 5/- mint	£30	
	611	1903.04 CA, 1d. (small corner crease). 1d. and 2½d. and 1905 MCA ½d. all showing variety "SER.ET" for "SERVIET", mint or unused with some original gum	45	38.00
	612	1905-11 Q.V. type. 3d. (4). 4d. (4). 6d. (3). 1/- (3) and 2/- (2) with colour change. a few faults, mint or unused with some, to much, original gum. (16)	£70	
	613	1905-11 Q.V. 3d. (4). 4d. (3). 6d. (4). 1/- (3) and 2/- (2) with colour changes, a few faults. generally fair to good used. (15)	£70	
Photo	614	1912 2/- die proof of the frame in black on glazed card (92x60 mm.) dated "17 JUN. 12". Ex Surtees. R.L. Certificate of Opinion (1976).	£150	
	615	1916-1919 War Stamps (58) with varieties comprising 1916 (April-Sept.) ½d. "no stop" (2). (Sept.-Dec.) 1½d. "no stop" (2) and "S" omitted. 1917 ½d. "no stop" and overprint inverted. 1½d. "no stop" and overprint double, and 3d. "no stop", some in multiples with normal. mint	£60	85.00
	616	1916 (Sept.-Dec.) War Stamp. 1½d. orange. variety inverted "d" for "p" in pair with normal (perforation fault at foot), mint	£40	32.00
	617	— ditto, a used example	£35	40.00
	618	— ditto, as last but cancelled to order in one corner	£30	
Photo	619	— ditto. 3d. purple on lemon. variety overprint inverted, slight colour run. unused.	£50	70.00
	620	1917 War Stamp. 3d. purple on yellow, variety overprint sideways (reading up). faint crease and thin-spot otherwise of fine appearance. mint	£40	48.00
	621	1919-21 MCA, ½d., 1d. 1½d. (2). 2d. (2), 2½d. (2). 3d. to 3/- 5/- (2). 10/- and 1921 6d.. some natural gum-creasing, mounted mint. (17)	£85	
	622	1919-21 MCA, 1d., pair on gummed paper (thins). 2d. strip of three (creases, a little soiled). 2½d. block of six (tiny corner crease. slightly soiled) and 4d., marginal strip of three handstamped "27 OCT 1920". imperforate plate proofs in issued colours on watermarked paper, the 1d. (sideways) and 2½d. Script, the 2d. and 4d. MCA	£300	325.00
	623	1919-21 MCA, 1½d. perforated colour trial with upright watermark in grey-black affixed to "Appendix" piece (124x81 mm.. horizontal crease at top not affecting stamp) dated "28th Feb 1919"	£40	58.00
	624	1919-21 MCA, 1½d. in green. affixed to piece (112x37 mm.) marked "Approved for 1½d. WHM 118/19"	£40	52.00
	625	1919-21 MCA, 1½d. in deep chestnut-brown, off-centre and with the tips of perforations trimmed at right	£30	48.00
	626	1919-21 MCA, 1½d. in bistre-brown. tips of a few perforations trimmed at top right	£30	52.00
	627	1919-21 MCA, 1½d in indigo. 3d. in sepia and green. a pair (one thinned). 4d. in orange and sepia. block of four (lower pair thinned). 1/- in lake and myrtle-green, 3/- in carmine and yellow-green and 5/- in blue-green and ultramarine. imperforate Printer's Samples on unwatermarked paper	£150	220.00

Image	Lot	Jamaica	Est	Real
	628	1919-21 MCA, 2½d. frame and vignette. 2/- frame (crease and stained) and vignette, 3/- frame and 5/- vignette, six separate die proofs in black on glazed paper (various sizes), the 5/- dated "9.12.20" on the face and the 2½d. vignette "8/10/20" on reverse	£300	
Photo	629	1919-21 MCA, 10/-. photographic essay of a vertical format design affixed to card (90x115 mm.). lettered "B." and dated "8th Oct. 19".	£100	170.00
	630	1921-29 Script. ½d. (2). 1d. 1½d, (2). 2d. (2). 2½d. (2). 3d. (2). 4d.. 6d. (2), 1/- (2). 2/- (2), 3/- 5/- (2) and 10/-, 1923 Child Welfare set, 1929-32 1d. (2) and 1½d. and 1935 Silver Jubilee set, mounted mint. (32)	£50	36.00
Photo	631	1921-29 Script. 2/- light blue and brown, showing variety lower portion of frame completely DOUBLY PRINTED. Rare. Ex Cameron. B.P.A. Certificate (1974).	£351)	550.00
Photo	632	1929 K.G. V head, 1d., die proof in blue on wove paper (54x76 mm.), marked "A", paper-clip crease and small rust stain clear of impression.	£75	56.00
	633	1935 Silver Jubilee, 1½d. ultramarine and grey-black. a corner pair. one showing the variety "extra flagstaff". unmounted mint	£20	23.00
Photo	634	1935 Silver Jubilee 1 /- slate and purple. showing variety "extra flagstaff", mounted mint.	£75	100.00
Photo	635	1937 Coronation set in imperforate singles each perforated "SPECIMEN", the 2½d. with faint natural gum-creasing in one corner.	£150	220.00

