

Robson Lowe Sale of Edwin Erickson Jamaica, 6 Sept 1972

Contents

Auction Lots.....	2
Images.....	26

Robson Lowe Sale of Edwin Erickson Jamaica, 6 Sept 1972

Auction Lots

img	Lot	Jamaica	Est	Real GBP
		Pre-adhesive and Handstruck Stamps		
		JAMAICA straight line and fleuron datestamps		
img	1001	1758 (July 26th) entire letter from Kingston to Edinburgh with 'JAMAICA' (Foster J1) superb on flap. Carried by the Duke packet.	£75	67.50
	1002	1774 (November) entire letter to London with 'IAMAICA', superb 1779 letter to Wolverhampton with 'JAMAICA', very fine and 1795 letter to London with 'IAMAICA' fine (Foster J1, J2 and J3)	£35	90
	1003	1774 entire letter to London with 'JAMAICA' (Foster J3), fine, at back, some staining	£14	7
	1004	1794 'IAMAICA' across flap, 1801 and 1806 two line Jamaica date stamp, 1806 large, 1814 and 1821 medium fleurons, poor to fine. (6)	£30	21
		Post Town straight line hand stamps		
img	1005	1778 entire letter to London with endorsement 'Inland Post Pd 7d½', 'LACOVIA' followed by star, legible strike and 'JAMAICA' below, good strike, about half a dozen are said to exist.	£25	42
	1006	1791 entire letter to Scotland, readdressed front London with good 'IAMAICA' and faint 'MARTHA/BRAE' (Type T1), five are said to be recorded	£15	14
img	1007	1799 entire letter from Trelawny to Edinburgh with fine 'SPANISH/TOWN' on flap.	£15	34
	1008	1800 entire letter to Edinburgh with mainly fine 'FALMOUTH' across flap and 1819 part letter to Dingall with fair to good 'SPANISH TOWN' across flap	£20	12
	1009	1801 stained and rather damaged entire letter to Edinburgh with good 'FALMOUTH' at back, 1833 letter to London with fair 'MONTEGO BAY' across flap and 1834 entire letter to Stirling with overinked and smudged 'CLARENDON' across flap	£20	16
img	1010	1823 letter to Ayr with endorsement 'Pd 7½', 'MANCHIONEAL', mainly good strike in brownish Ink and across flap also small Jamaica fleuron.	£15	26
		Post Town' straight line hand stamps with 'JA'		
	1011	1807 entire letter to London with fair 'SPANISH-TOWN/JA' across flap and 1811 entire letter to Duncans with good 'SAVANNA-LA MAR/JA' across flap, both items stained in places	£18	20
img	1012	1809 entire letter to Edinburgh with very fine 'MONTEGO BAY / JA' on reverse.	£20	34
img	1013	1813 entire letter from Bluefields to St. Albans with good to fine 'ROBINS-RIVER/ JA', woolly ink, across flap and partly overstamped by London date stamp. About six are known.	£20	48
	1014	1814 entire letter from Clarendon to Hawick with poor 'SPANISH TOWN/JA', 1829 letter to London with good 'FALMOUTH/JA' and 1832 rather stained entire letter to London with good 'MONTEGO BAY/JA'	£25	27
img	1015	1819 entire letter to Kingston, climatically browned and with fine 'ANNOTTO-BAY/JA' across flap.	£18	27
	1016	1830 part letter to Spanish Town with fair to good 'MONTEGO BAY/JA', Some climatic staining and 1831 entire letter to Glasgow with sharp albino 'GOSHEN/JA'	£20	26
		Ship Letter Handstamps		
img	1017	1810 entire letter to East Markham with good 'Ship Letter / Crown / JAMAICA' On face and fair similar strike for Portsmouth.	£20	26
	1018	1826 letter to East Markham, Notts., entirely overwritten both back and front by the reply and showing oval 'Ship Letter / Crown / JAMAICA', good to fine woolly impression as well as double oval Portsmouth Ship Letter.	£15	8
img	1019	1850 letter to New York With 'KINGSTON-JAMAICA / PAID' cds in red and 'JAMAICA/SHIP LETTER', fine strikes.	£45	80

Robson Lowe Sale of Edwin Erickson Jamaica, 6 Sept 1972

img	Lot	Jamaica	Est	Real GBP
img	1020	1851 nearly full entire letter to New York with red cds 'KINGSTON-JAMAICA/PAID' and unframed 'JAMAICA / SHIP LETTER', both fine.	£45	87.50
img	1021	1821 entire letter to Ayr with framed 'COMMERCIAL ROOMS' Kingston Jamaica' (CR3) light legible strike over stamped by Glasgow cds and with step type KINGSBRIDGE / SHIP LETTER', fine, all on face.	£25	60
img	1022	1824 entire letter to 'H.M. Schooner Renegade, Jamaica' with very fine 'COMMERCIAL ROOMS/KINGSTON JAMAICA' (CR4) on face, no other markings.	£30	67.50
	1023	1825 entire letter to Ayr with good to faint 'COMMERCIAL ROOMS / KINGSTON JAMAICA across flap and 'TOO LATE FOR' (m/s packet) fine on face (CR 4 and 5).	£20	46
img	1024	1828 entire letter with fine 'COMMERCIAL ROOM' (CR6) across flap and yellow Step-type 'RYDE/SHIP LETTER', fine on face.	£30	70
img	1025	1833 letter to London with fine circular 'COMMERCIAL / KINGSTON / JAMAICA / BUILDINGS' on flap.	£25	67.50
img	1026	1843 entire letter from Cuba to England with large oval 'Received & Forwarded / BY / DARRELL & BARCLAY / KINGSTON JAMAICA', on reverse fine strike (FAC 4), two are stated to be recorded	£30	67.50
	1027	1844 cover to Stirling with enclosure from Ramble and with ms 'Recd & forwarded by Marlow & La Bichey, 9th July 1844'. Unrecorded by Foster or Rowe	£15	36
		Other Handstruck markings		
	1028	1769 entire letter from Jamaica to London endorsed 'per the William Beckford QDC' and with fine 'DOVER/SHIP LRE' and 1821 letter to London from Falmouth. Jamaica, with faint by legible 'MARGATE/SHIP-LRE'	£30	15
	1029	1773 entire letter from Jamaica to London, falling apart when opened with 'DOVER / SHIP-LRE' and 1791 entire letter from Martha Brae to Liverpool readdressed to Dumfries with 'DOVER/SHIP-LRE' crossed through and 'LIVERPOOL', good to fine	£30	15
	1030	1832 part letter to Luton showing fair 'CARTAGENA' fleuron in red 1848 cover to Jamaica, readdressed to Bermuda with Panama Transit date stamp and 'FRANCA' on face, three Kingston and a Port Royal cds on reverse	£10	20
	1031	1840 entire letter to London with 'SPANISH TOWN' cds in blue, fine, on reverse 1852 entire to London showing legible Claremont cds, 1859 entire letter to Old Harbour with Kingston Paid cds on face and Old Harbour cds on flap	£14	26
	1032	1841 entire letter to London with overinked 'DUNCANS / JAMAICA' cds. fine 'JAMAICA/PAID' and double lined 'MORE/TO/PAY' and 1862 entire letter to London with renewal 'JAMAICA/PAID' cds and cds of Port Maria, fine	£20	23
	1033	1842 part letter from Kingston to New York with Charleston cds and 'SHIP' 1846 entire letter from Mount Holstein to Mt. Vernon, Ohio with 'SHIP', 1857 envelope from Eliot Mission Station, Jamaica to New York with 'NEW YORK / SHIP / 5 cts' cds and with green oval firm's mark of Geo. Solomon & Co. Kingston on reverse and 1860 entire letter from Kingston to New York with US 1c (creased) with carrier date stamp	£12	8.50
img	1034	1845 entire letter from Kingston to May Hill with fine '6' (TP1).	£15	19
img	1035	1846 entire letter from Bath to Aberdeen with 'TOO LATE' at upper left (TL3), unusual on pre-adhesive covers.	£15	13.50
	1036	1850 entire letter from Kingston to Paris with framed 'COLONIE / & ART 13', fine on face, said to be scarce on letters from Jamaica	£15	9
	1037	1900-02 two covers from Turks Is., Colombia (2) and Dominican Republic, all showing 'JAMAICA/TRANSIT', good to fine. (8)	£15	29
		Great Britain used in Jamaica		
		See also lots 1227 onwards for further G.B. used in Jamaica		

Robson Lowe Sale of Edwin Erickson Jamaica, 6 Sept 1972

img	Lot	Jamaica	Est	Real GBP
	1038	GB used in Jamaica: KINGSTON: (A01) 1859 (Oct. 26th) cover to London bearing wing-margined 6d with clear duplex cancellation, some slight stains	£12	21
	1039	GB used in Jamaica: 1859 (Nov. 25th) cover to London with duplex date stamp. 6d has straight edge at right	£12	17
	1040	GB used in Jamaica: 1859 (May 26th), a rather similar large part cover, 6d stamp crease and with corner defect	£10	8
img	1041	GB used in Jamaica: BATH: 1859 (Mar, 19) large dated piece bearing wing-margined 4d centrally cancelled 'A29' and showing Bath cds	£26	23
img	1042	GB used in Jamaica: BLACK RIVER: 1859 (Oct. 22) nearly full cover to Kingston bearing 1d pair and 4d cancelled 'A30', the pair off-centre and a little stained	£35	33
img	1043	GB used in Jamaica: 1859 (Apr. 25) large dated piece with 6d wing margined pair cancelled 'A30' and showing Black River cds, some perfs. pulled	£22	20
img	1044	GB used in Jamaica: BLUFF BAY: 1859 (Oct. 7) cover to Kingston with 4d cancelled 'A32'.	£70	120
img	1045	GB used in Jamaica: CLAREMONT: 1859 (Oct. 25) cover to Kingston with 4d heavily cancelled 'A34' (smudged) and with Claremont cds on face.	£45	60
img	1046	GB used in Jamaica: DUNCANS: 1859 (May 6) cover to Kingston with wing-margined 6d cancelled 'A37' and with Duncans cds on face, both woolly impressions.	£46	55
img	1047	GB used in Jamaica: FALMOUTH: 1859 (Nov.) cover to Kingston with 4d cancelled 'A39' and with Falmouth cds on face.	£32	48
	1048	GB used in Jamaica: GOSHEN : 1858 (Sept, 9) cover to Liverpool with 6d clearly cancelled 'A01' and with light Goshen cds on face, heavy horizontal filing crease	£16	72.50
img	1049	GB used in Jamaica: GRANGE HILL: 1859 (Sep. 8) cover to Kingston with 4d and 6d pair clearly cancelled 'A45', the 4d with fault.	£55	75
img	1050	GB used in Jamaica: 1859 (Feb. 28) cover to Kingston with wing-margined 4d pair cancelled 'A01' and with Grange Hill cds on face.	£50	50
img	1051	GB used in Jamaica: 1859 (May 23) large part cover with 1d (2) and 6d (wing-margin) clearly or lightly cancelled 'A45' and with Grange Hill cds alongside.	£27	36
img	1052	GB used in Jamaica: LUCEA: 1859 (Nov. 17) rather stained cover to Kingston with 4d pair nicely cancelled 'A51' and with Lucea cds alongside.	£38	55
img	1053	GB used in Jamaica: MANDEVILLE: 1859 (Nov. 2) cover to Kingston with 4d cancelled 'A53'.	£25	38
	1054	GB used in Jamaica: MAY HILL: 1859 (Jan. 15) nearly full cover to Liverpool with 1d (2) and 4d cancelled 'A01' and with May Hill cds on reverse	£25	50
img	1055	GB used in Jamaica: 1859 (Dec. 2) large part cover with 6d clearly cancelled 'A54'. corner fault; Mayhill cds appears on reverse.	£20	26
img	1056	GB used in Jamaica: MORANT BAY: 1859 (Aug. 19) large part cover bearing 4d clearly cancelled 'A59' and showing Morant Bay cds	£28	24
img	1057	GB used in Jamaica: OCHO RIOS: 1859 (Mar. 22) cover to Kingston with 4d lightly cancelled 'A60'.	£32	40
img	1058	GB used in Jamaica: 1859 (Mar. 8) large part cover bearing 4d similarly cancelled, corner fault.	£25	21
	1059	GB used in Jamaica: 1859 (Mar. 3) cover to Kingston with 4d centrally cancelled 'A01' and with faint Ocho Rios cds on reverse	£24	34
img	1060	GB used in Jamaica: OLD HARBOUR: 1859 (Aug. 21) climatically affected cover to Four Paths bearing 4d clearly cancelled 'A61'.	£30	45
img	1061	GB used in Jamaica: PLANTAIN GARDEN RIVER: 1859 (Feb. 11) cover to Kingston bearing 4d cancelled 'A01' and cancelled with Plantain Garden River cds	£60	130

Robson Lowe Sale of Edwin Erickson Jamaica, 6 Sept 1972

img	Lot	Jamaica	Est	Real GBP
img	1062	GB used in Jamaica: PORT ANTONIO: 1859 (Apr. 12) cover to Kingston with two 4d pairs lightly cancelled 'A61' : .	£45	65
img	1063	GB used in Jamaica: PORUS: 1859 (Feb 2) part cover with 4d cancelled with Porus cds and 'A01' some perforations trimmed away	£45	28
img	1064	GB used in Jamaica: 1859 (Dec. 2) large dated piece bearing 4d centrally cancelled 'A68'. slight staining and rubbing and showing Porus cds	£45	24
img	1065	GB used in Jamaica: RIO BUENO: 1859 (Dec. 10) cover to Kilburn with 6d clearly cancelled 'A70' and with Rio Bueno datestamp alongside.	£65	105
img	1066	GB used in Jamaica: 1860 (Apr. 21) large part cover (addressee's name scored out) to London with 1d pair and 4d lightly cancelled 'A70', with red crayon 'paid 6d' and large part Jamaica Paid cds in red on face.	£60	60
img	1067	GB used in Jamaica: RODNEY HALL: 1859 (May 7) large dated piece bearing 4d nicely cancelled A71' and with Rodney Hall cds on reverse.	£40	46
	1068	GB used in Jamaica: ST. ANNS BAY: 1859 (Apr. 1) large part cover with 6d, perforation trimmed on three sides, clearly cancelled 'A73'	£10	6
img	1069	GB used in Jamaica: SALT GUT: 1859 (Apr. 15) cover to Kingston bearing 6d twice lightly cancelled 'A74', some perforations trimmed away.	£55	60
img	1070	GB used in Jamaica: SAVANNA-LA-MAR: 1859 (Mar. 14) large part cover with 4d wing margined pair lightly cancelled 'A75'.	£42	33
img	1071	GB used in Jamaica: 1859 (Feb. 25) cover to London with 6d clearly cancelled with Savannah la Mar cds and tied also by 'A01'.	£40	65
img	1072	GB used in Jamaica: 1859 (9 June) cover to London with wing-margined 6d lightly cancelled 'A75', faint crease at foot.	£35	60
img	1073	GB used in Jamaica: SPANISH TOWN: 1860 (Jan. 26) cover to Four Paths bearing 4d clearly cancelled 'A76'.	£42	62.51
	1074	GB used in Jamaica: 1858 (Aug. 5) piece with 1d pair cancelled 'A01' and one stamp tied by Savannah la Mar cds With B.P.A. Certificate (1960) and a piece with 1d (2) and 4d cancelled 'A76' at Spanish Town	£35	42
img	1075	GB used in Jamaica: 1859 (Dec.) large part cover to Kingston with 4d with three parallel ink bars and light 'A76' cancellation.	£32	34
		Issued Stamps 1860-63 wmk Pineapple		
	1076	1860-3 Pine: 1d, 2d 3d, 4d, 6d and 1/-, the unused set, fresh, some or much original gum	£60	70
	1077	1860-3 Pine: 1d (6), 2d (4) 5 3d (4. one with two diagonal pen strokes), 4d (4), 6d and 1/- (2) fair to fine unused (21)	£55	40
	1078	1860-3 Pine: 1d to 1/- (3, selected shades). mostly lightly cancelled (8)	£10	11.50
	1079	1860-3 Pine: 1d (7), 2d, 3d (4), 4d (3), 6d (5) and 1/- (3). fair to fine shades. (23)	£22	11
	1080	1860-3 Pine: 1d pale blue, inverted watermark and 3d green 'squat' watermark, fresh unused	£12	17
	1081	1860-3 Pine: 1d blue, a fresh block (6X5) with sheet margin (damage to margin in one place) at left and straight edge at right, minor faults. (30)	£60	30
	1082	1860-3 Pine: 1d blue pair on front and cancelled 'A61', 1870-83 1d and 1/- on separate covers, 1885 ½d pair on cover and cancelled 'A64' and 1889-91 1d and 2d pair used on two covers. some faults. (9)	£25	30
img	1083	1860-3 Pine: 2d rose, 3d and 6d pair cancelled 'A42' and used together on a most attractive 1865 cover from Gordon Town to Bareilly.	£42	65
img	1084	1860-3 Pine: 3d green, fresh wing-margin block, large part original gum.	£32	24

Robson Lowe Sale of Edwin Erickson Jamaica, 6 Sept 1972

	Lot	Jamaica	Est	Real GBP
	1085	1860-3 Pine: 3d green a rather similar block, not wing-margined and rather off-centre	£28	23
	1086	1860-3 Pine: 3d green used on 1866 cover from Port Morant to Chapelton, stamp off centre and a little stained	£24	22
img	1087	1860-3 Pine: 4d red-orange, block with some original gum, top pair slightly creased and some stains, more particularly on reverse, centred low.	£35	20
img	1088	1860-3 Pine: 4d red-oronge, a fresh pair with much original gum, previous heavy mount.	£30	23
	1089	1860-3 Pine: 4d orange, wing-margined pair and indistinctly cancelled on 1868 cover to Nantes, cover torn at upper right	£10	13
img	1090	1860-3 Pine: 6d dull lilac. a fresh marginal wing margined block, large part original gum,	£32	36
img	1091	1860-3 Pine: 6d deep purple, fresh mint example, a remarkable deep colour, only slightly off centre.	£42	46
img	1092	1860-3 Pine: 6d severed pair clearly cancelled 'A43' on 1861 cover from Gordon Town to India, stamps off centre but attractive.	£25	52.50
	1093	1860-3 Pine: 6d wing-margined copy, heavily cancelled on cover and 1870-83 2d (2) and 1/- used on two covers. one local, one to Belgium	£28	21
	1094	1860-3 Pine: 6d dull lilac used on 1862 cover from Kingston to Newcastle on Tyne, stamp rather faded and cover a little damp spotted	£20	13.50
img	1095	1860-3 Pine: 1/- purple-brown with dollar variety, some original gum, some faults but rare unused	£40	42
img	1096	1860-3 Pine: 1/- dull brown, lightly cancelled and showing dollar variety.	£22	22
	1097	1860-3 Pine: 1/- dull brown fresh block (4x3), large part original gum, minor stains	£10	23
img	1098	1860-3 Pine: 1/- brown, two pairs, one with wing-margin used on 1866 cover from Green Island to Liverpool, stamps cancelled 'A45'.	£45	62.50
	1099	1860-3 Pine: 1/- brown used on large part 1865 cover front Grange Hill to London, stamp creased but clearly cancelled 'A44'	£18	18
		1870-83 wmk. Crown CC		
	1100	1870-83 Crown CC: ½d (5), 1d (2) 2d (4) 3d (2) 4d (2) 6d (4) and 1/- (4) unused or mint with some shades. (23)	£38	50
	1101	1870-83 Crown CC: ½d (2), 1d (5), 2d (3), 3d (4), 4d (5), 6d (3) and 1/- (6), one with dollar variety, one additionally cancelled with framed 'FRANCO', good to fine. (28)	£20	24
	1102	1870-83 Crown CC: ½d claret and d deep claret in blocks of four, ½d deep claret block of nine, 2d rose and 1/- block of four, mainly fine. (25)	£15	16
	1103	1870-83 Crown CC: ½d deep claret and 1d blue, each in a fresh mint block of four. (8)	£10	16
img	1104	1870-83 Crown CC: 1d blue cancelled 'A67' and used on soldiers letter from Port Royal to Scarborough, shows h.s. '1' in red on face.	£45	105
	1105	1870-83 Crown CC: 2d deep rose, unused block (5x3) with some original gum, centre vertical row heavily creased and some rust stains	£30	21
	1106	1870-83 Crown CC: 1/- dull brown, corner blocks of four (with current number) and twelve (with plate number and marginal legend), much original gum but some age stains	£14	9.50
photo	1107	1870-83 Crown CC: 1/- the dollar variety in a fresh block with large part original gum, three small rust stains.	£42	26
	1108	1870-83 Crown CC: 2/- Venetian red (5) and 5/- lilac (4), unused or mint singles	£10	14
	1109	1870-83 Crown CC: 2/- and 5/- four of each value, mainly lightly cancelled	£12	24
	1110	1870-83 Crown CC: 2/- fresh mint blocks of six (vertical) and four	£10	12.50
img	1111	1870-83 Crown CC: 2/- variety imperforate, some original gum. With R.P.S. Certificate (1932).	£20	30

Robson Lowe Sale of Edwin Erickson Jamaica, 6 Sept 1972

	img	Lot	Jamaica	Est	Real GBP
	img	1112	1870-83 Crown CC: 5/- lilac. fresh block with much original gum, slight crease along top.	£22	21
		1113	1870-83 Crown CC: 5/- lilac variety inverted watermark. some original gum	£24	13.50
			1883-97 wmk. Crown CA		
		1114	1883-97 Crown CA: ½d (6), 1d rose (7), 2d grey or slate (6), 3d (11), 6d (12), 1/- (4), 2/- (4) and 5/- and ½d (6), 1d rose (2), 2d slate, 3d (4, a block of six), 6d (4, and two blocks of nine) and 1/- (3). all in blocks of four, mainly fine mint (156)	£42	75
		1115	1883-97 Crown CA: ½d (23), 1d (10), 2d (8), 3d (9), 4d (5), 6d (4), 1/- (3), 2/- (4) and 5/- (2), 1900 1d (4) and 1901 1d (8). mainly fine. (80)	£10	14
		1116	1883-97 Crown CA: 1d blue (5). 2d rose (3), 4d (5 and a pair), also 2d block of six and 4d, six blocks of four. mint or fine unused or mint. (45)	£35	32
	img	1117	1883-97 Crown CA: 4d red-orange, fresh with large part original gum. slightly off centre. With R.P.S. Certificate (1932).	£16	24
	img	1118	1883-97 Crown CA: 1/- brown with dollar fresh unused with large part original gum,	£50	60
		1119	1883-97 Crown CA: 1/- brown with \$, lightly cancelled, somewhat stained	£18	14
	img	1120	1883-97 Crown CA: 2/- Venetian Red variety imperforate, unused with little original gum. With R.P.S. Certificate (1932).	£50	70
		1121	1889-91: 1d (63), 2d (14), 2½d (14), 1890 2½d, on 4d (9) with some varieties including double and misplaced surcharge, 1900 1d (7) and 1901 1d (3), unused or mint. (111)	£25	20
		1122	1889-91: 1d (45) 2d (9) and 2½d (14) and 1890 2½d on 4d (12) one with double surcharge and several other varieties). mainly fine. (80)	£24	16.50
		1123	1889-91 1d used on 1891 soldiers letter from Port Royal to Tunbridge Wells, the stamp centrally cancelled 'A67'	£16	40
		1124	1890 2½d on 4d, four blocks of four, two pairs and two singles (one double surcharge), several varieties, much original gum. (22)	£35	46
		1125	1897-1939 registered covers (145) practically all commercial with Q.V. to 2/- and many different cancellations. (424)	£20	50
		1126	1902-47 covers. etc. (310) with some postal stationery. much is K.G, V period by hand, all mint. arranged according to post offices but there are about 18 military items (mainly U.S.A.) including Gibraltar Camp. (460)	£25	62.50
		1127	1903-04 CA ½d 1d 2½d and 5d, five of each and ½d, 2½d (2) and 5d, unused or mint. (36)	£15	13
		1128	1903-04 CA ½d (5), 1d (9) and 2½d (11) all unused and showing eight 'SER.IET' varieties, ½d (10), 1d (12) and 2½d all used and showing three 'SER.IET' varieties, (49)	£13	19
		1129	1903-04 CA ½d (5), 1d (11), 2½d (8) and 5d (4) showing four 'SER.IET' varieties. one 5d has inverted watermark. (28)	£10	12.50
	img	1130	1903-04 CA 5d grey and yellow. a lightly cancelled strip, the centre stamp the 'SER.ET' variety.. (3)	£80	87.50
		1131	1905-11 ½d (39) 1d (17), 2½d (129) and 5d (8) with bi- and uni-colours and fifteen blocks of four or larger, mainly fine mint. (94)	£24	12
		1132	1905-11 ½d (9), 1d (5), 2½d (6), 3d (4). 4d red-brown (2), 6d (6). 1/- (3), 2/- Venetian red (2) and 5/- (3), unused or mint	£34	32
		1133	1905-11 ½d (5), 1d (3), 2½d (4), 3d (3), 4d red-brown, 5d (3) 6d yellow (2), 1/- brown (4), 2/- Venetian red (2) and 5/- (2). mainly good to fine. (29)	£28	34
		1134	1905-11 ½d (6), 1d (10), 2½d (4) 3d (13), 4d (2), 6d (2), 1/- black on green (4) and 2/- purple on blue (3) and 1911 2d with five blocks of four	£8	10

Robson Lowe Sale of Edwin Erickson Jamaica, 6 Sept 1972

img	Lot	Jamaica	Est	Real GBP
	1135	1905-11 1d carmine, 2½d blue. 3d purple on yellow (2). 4d black on yellow, 4d, red on yellow, 6d lilac (2), 1/- black on green (2) and 2/- purple on blue, each in a mint block of four, 3d purple on yellow (6), 4d black on yellow (2), 4d red on yellow (5), 6d lilac (8), 1/- black on green (3), 2/- purple on blue (4) and 1911 2d (2), unused or mint (74)	£40	32
	1136	1905-11 3d olive-green. 3d sage-green. 6d dull orange. 6d golden yellow, 1/- brown and both 2/-, each in a mint block of four	£45	52.50
	1137	1905-11 3d purple on yellow (2, one pale), 4d black on yellow and 4d red on yellow (3, also blocks of six and twelve), each in a mint block of four	£10	10
img	1138	1905-11 5d grey and orange-yellow, fine mint and showing the 'SER.IET' variety.	£70	77.50
	1139	1905-11 6d dull and bright purple. block of 48 and three blocks of four and 5/- block of four mint. (64)	£28	32
img	1140	1905-11 1/- brown, corner block showing current number, one with faint dollar variety, much original gum. slightly split and stained	£50	26
img	1141	1905-11 1/- brown \$. fairly lightly cancelled and showing dollar variety. some blunted perfs.	£40	36
img	1142	1905-11 1/- black on green, a mint block, one the dollar variety. With R.P.S. Certificate (1951).	£70	85
img	1143	1905-11 1/- black on green., . a lightly cancelled vertical pair showing current number. the lower stamp the dollar variety.	£75	80
	1144	1911 2d (41), 1912-20 values to 2/- in blocks of four or larger and to 5/- (2) in singles, all mint (184)	£15	21
	1145	1912-20 values to 6d in blocks of four or larger and to 5/- (2) in singles, mainly fine with shades. (123)	£13	17
		1916-19 War Stamps		
	1146	1916 (Apr.-Sept.) and (Sept.-Dec.). a collection with (Apr.-Sept.) ½d (20, with two double and two inverted overprints) and 3d (6) and (Sept.-Dec.) 1½d (13) and 1½d (31. with 'S' inverted by hand (2) and 'S' omitted). with several varieties. (70)	£25	38
	1147	1916 (Apr.-Sept.). an unused collection of the ½d and 3d (51) values including many varieties with ½d block of four and two singles inverted (260)	£16	40
	1148	1916 (Sept.-Dec.). ½d blue-green, an unused collection with 22 multiples and many varieties including 'R' Of 'WAR' inserted by hand (75)	£10	42
	1149	1916 (Sept.-Dec.). 1½d, orange, an unused collection with forty-three multiples including several varieties with 'R' omitted, 's' omitted (3) and 's' inserted by hand (3), (167)	£30	62.50
	1150	1916 (Sept.-Dec.). 1½d, orange, block of forty, one stamp with 's' omitted and three pairs, one showing 'P' inserted and no stop. one with misplaced overprint, one with 'R' inserted by hand, all mint. (46)	£13	22
	1151	1916 (Sept.-Dec.). 3d purple on lemon. unused collection with many multiples and varieties including 's' inserted by hand (5) and 's' omitted (140)	£32	65
	1152	1916 (Sept.-Dec.). 3d purple on lemon. six blocks of four. strip of three, pair and five singles showing several varieties including 's' omitted (3) and 's' inserted (4). some discoloured (35)	£37	29
	1153	1916 (Sept.-Dec.). 3d purple on lemon variety overprint inverted, unused with much original gum	£10	14.50
	1154	1916 (Sept.-Dec.). 3d purple on lemon, (in unused block. one stamp with 's' omitted, much original gum)	£9	12.50
	1155	1916 (Sept.-Dec.). 3d purple on lemon. two unused marginal blocks, one stamp in each block the variety 's' inserted by hand	£15	10.50
	1156	1917-19. a collection with 1917 ½d (21. one with 'P' inserted), 1½d (49, two double and some misplaced overprints) and 3d (27, four inverted, four sideways and 'i,' inserted) and 1919 1d (12) and 3d (20). (119)	£40	77.50

Robson Lowe Sale of Edwin Erickson Jamaica, 6 Sept 1972

img	Lot	Jamaica	Est	Real GBP
	1157	1917 ½d blue-green, an unused or mint collection with many multiples and varieties including inverted (8) overprint and overprint on back (2). (264)	£15	48
	1158	1917 ½d blue-green. variety inverted overprint, a marginal mint block (4x3)	£10	9.50
	1159	1917 ½d blue-green, variety overprint on back only, a mint block	£11	14.50
	1160	1917 1½d orange. the unused or mint collection with many multiples and varieties including double and inverted (3) overprints. (264)	£50	70
	1161	1917 3d purple on yellow. unused or mint collection with many multiples and varieties and 1919 '2d (68) and 3d (141). (346)	£15	21
	1162	1917 3d purple on yellow, variety inverted overprint, faint stains and a pair, one with 'P,' inserted, a corner rounded	£12	12.50
img	1163	1917 3d purple on yellow, mint corner pair, corner stamp without overprint, the other with overprint sideways. very rare. Ex Bute.	£50	70
	1164	1917 3d purple on yellow, variety overprint sideways reading up, fine mint	£14	22
img	1165	1917 3d purple on yellow, variety overprint misplaced so that 'WAR' falls on extreme top right corner, Ex Bute.	£18	30
img	1166	1917 3d purple on yellow as last but with 'STAMP' sideways at left. Ex Bute.	£18	28
	1167	1919-21 ½d (2). 1d (3), 1½d (3), 2d (3), 2½d (2). 3d (2), 4d (2), 1/- (4), 2/- (4), 5/- (2) and 10/- (3), unused or mint shades	£30	28
	1168	1919-21 ½d, 1d, 1½d (3), 2d (5), 2½d, 3d (5), 4d, 1/- (5), 2/- (2), one with inverted watermark), 3/-, 5/- and 10/-, fine	£10	15
	1169	1919-21 ½d (2). 1d 1½d (7, and a block of six), 2d, 2½d, 3d 4d and 6d (2) in blocks of four: 1½d strip of three and two singles, 2½d (2) and 6d (3), all mint. (80)	15	
img	1170	1919-21 6d 'Abolition of Slavery' prepared for use but not issued, on Script CA paper A very fine example of this rarity of which eight are thought to exist.	£500	475
img	1171	1919-21 1/- orange-yellow and red-orange, the variety with frame inverted, very fine lightly mounted mint and the rarest stamp of Jamaica.	£1,000	1750
	1172	1921 6d (14, with three blocks of four) and 1927 ½d (71. with seven blocks), all mint. (85)	£10	6.50
	1173	1921-23 Script ½d (18), 1d (5), 1½d (6), 2d (10), 2½d (11), 3d (14), 4d (8), 6d (14), 1/- (5), 2/- (5), 3/- (3), 5/- (5) and 10/- (3), unused or mint with shades and some multiples. (107)	£25	31
	1174	1921-23 Script ½d (2), 1d (2), 1½d (13. some showing marginal numbers). 2d (3), 2½d (3), 3d (4), 4d (3), 1/- (6) and 2/- (3) all in mint blocks of four. (160)	£17	22
	1175	1921-23 Script ½d to 1/- in blocks of four or larger, some duplication and in singles to 2/- (4), 3/- (2), 5/- (4) and 10/-, mainly fine. (173)	£12	15.50
	1176	1923 Child Welfare, seven mint and five used sets including mint and used blocks of four. (36)	£15	20
	1177	1929-70 air mail covers (45) including Hindenberg flights, first Transatlantic mail, Lindbergh Flights, etc.; two are Trinidad (106)	£40	57.50
	1178	1929-32 to 9d (7 mint and 5 used) and 1932 to 6d mint and used, about twelve multiples are included (142)	£13	8
	1179	1935-70 covers (135), mainly commemorative and philatelic with values to £1 (3) some duplication. (391)	£25	16
	1180	1935 Jubilee. 5 mint and 5 used sets, also 1½d (2), 6d (3) and 1/- in multiples and top. Photo showing double flagstaffs and 1937 Coronations. ten sets, about half are used (112)	£30	15
	1181	1935 Jubilee 1½d and 6d each in complete sheet of sixty, the latter showing the extraflagstaff variety	£18	17
	1182	1938-64, a collection with 1938-52 to £1 (6), 1945-46 to 10/-, 1948 £1 and some later, nearly all used (753)	£27	31

Robson Lowe Sale of Edwin Erickson Jamaica, 6 Sept 1972

img	Lot	Jamaica	Est	Real GBP
	1183	1938-62, a mint collection, partly unmounted with 1956 to £1 two sets in blocks of four and 1962 to £1. (347)	£25	29
	1184	1938-52 ½d to 10/- (15) with various printings and shades and including over thirty blocks of four, all mint. (236)	£30	33
	1185	1938-52 ½d, two blocks of 12, one of ten and one of four. 1d four blocks of twelve, one of ten and one of four, 1½d two blocks of twelve, one of six and five of four (two light red-brown and two inter-panneau), all mint. (148)	£65	60
	1186	1938-52 5/- perf. 13 (5X2) and 10/- (4X2) each in corner imprint plate block Cat. £33(18)	£15	8
	1187	1945-46 1½d to 10/-, 1948 £1 (9) and later with 1956 to £1, all mint. (193)	£26	14
	1188	1945-46 1½d to 10/- each in complete sheet of sixty, all cheapest perfs. Cat. £136.20. (420)	£35	19
	1189	1945-46 1½d (4), 2d (3), 3d (7), 4½d (3), 2/- (3), 5/- (2), one somewhat stained) and 10/- (2, one somewhat stained) all in blocks or corner plate blocks of four, also 1½d (2) and 2d in corner plate blocks of six. (114)	£10	5
	1190	1953 Coronation 2d, Royal Visit 2d, 1955 Tercentenary 2d to 6d, 1962 Games 1d, to 2/-, 1964 Miss World 1/6d, 1964 3/- and Parliamentary Conference 3d each in complete sheet of sixty (the Games set has one stamp missing from each sheet). (780)	£25	17
	1191	1956 1d, an imperforate block with misplaced centre	£10	18
	1192	1956 1d, as last, a marginal pair with centre so misplaced that crown is at foot	£10	18
	1193	1956 5/-, 10/- and £1 each in corner imprint plate blocks of eight	£10	13
	1194	1960 Stamp Centenary 2d, 6d and 1/6d, 1963-64 ½d to 2/-, 1964 Miss World 3d, 1/-, 1/6d and 1964 1d to £1 and additional 5/- and £1 each in marginal, corner or plate (1964 ½d to £1) blocks of four. (128)	£15	12.50
	1195	1962-63 ½d to £1 each value in blocks of ten or twelve, each comprising bottom two rows of sheet with complete margins. (132)	£20	20
	1196	1964 2d complete sheet of sixty with inverted watermark. Cat. £12	£30	15
	1197	1841-1925 covers, etc. on post cards (31 in all) either addressed to or routed through Jamaica including items from Great Britain (mainly), U.S.A., etc. and with 1917 opened out cover with label 'Opened by an Officer of the Post Office by Express Warrant	£20	20
	1198	Postal Fiscals: 1865-74 1d (3), 1½d (2), 3d (25) and 1 / -, Telegraph 3d and Judicial Tax Q.V. 3d, 6d and 1/- and K.G. V 2/- and 5/-, all unused (38)	£12	12.50
	1199	Postal Fiscals: - a used collection, some postally, Judicial Tax values to 51- (4) showing \$ variety, all fiscally cancelled, embossed revenues to £2, various unused postage stamps, used varieties and Red Cross stamps. (293)	£15	17
	1200	Postal Fiscals: 1d (7) and 1855-74 1½d (2) and 3d (7) used with 1889-91 1d (2) and 2½d (2) on eight covers or fronts (2), six are registered, with cancels of Half Way Tree, Spanish Town, Shooters Hill. Up Park Camp and Porus, some faults. (20)	£20	40
	1201	Postal Fiscals: 1/- (3) and 5/- used with ordinary 6d on four covers or large part covers, one faked (5)	£25	16
	1202	Postal Fiscals: 1/ - used on 1903 registered cover from Myrtle Bank to Up Park Camp	£10	16
	1203	Official Stamps: 1890 (Apr.) ½d (28, two with double (both with R.P.S. Certificates) and one with inverted overprints) and 1890-91 ½d (27). 1d (11) and 2d (7), unused or mint. (73)	£22	26
	1204	Official Stamps: a used selection with 1890 (Apr.) OFFICIAL 17-17½ mm. block and two singles with inverted overprint, one with 'OFFIC . . .' one with both 'l's omitted, one with double overprint, one inverted and two with double overprints, also singles a	£25	32
img	1205	Official Stamps: as last. 'L' omitted, some original gum slightly crinkled and rubbed at top.	£15	11.50

Robson Lowe Sale of Edwin Erickson Jamaica, 6 Sept 1972

img	Lot	Jamaica	Est	Real GBP
img	1206	Official Stamps:, as last, overprint double, one vertical traces of original gum. rather soiled appearance.	£25	10
img	1207	Official Stamps:, Official 15-16 mm. long, unused with much original gum	£16	21
img	1208	Official Stamps: as last, fine and lightly cancelled (close impressions).	£15	25
	1209	Various Q.V. and K.E. postcards and reply cards with eleven handstamped or over-printed 'SPECIMEN', seven are used, only a little duplication. (33)	£12	23
	1210	1877-94 postcards with 1d h.s. in red), 1½d on 3d, 1½d and ½d (3) showing rare Mount Charles cds, boxed Spring Hill, returned and advertised marks, etc. (6)	£18	46
	1211	1877 a selection of postcards with red ½d (5, one used), 1d (6, two used) and 3d (5), all unused, mainly fine. (15)	£12	28
	1212	1878-89 1d postcards showing 'A55', 'A50', 'A71', 'A69' and two others as well as various date-stamps, some faults. (6)	£15	28
	1213	1881 (c.) - 1902 (c.) ½d (85), 1d (31), 1d large (4), ½d on 1 d (4), 1½d, on 3d (2), 1½d (4) and two wrappers with many different cancellations. some scarce. (134)	£25	26
	1214	1894-1904 a selection of used postcards with ½d (70), ½d on 1d (6), 1d small (41), 1d large (3), 1½d on 3d, 1½d (3) and a few others showing a wide selection of steel date-stamps. some defects. (124)	£24	52.50
		Cancellations		
	1215	The very fine collection arranged alphabetically on stock cards with over five hundred different towns or villages from Aberdeen to York Per, many on pieces and including some stripes and blocks on issues from Queen Victoria to Queen Elizabeth. Some duplication (approx 15,000)	£300	350
	1216	A collection arranged alphabetically on stock cards with many different towns and villages from Alexandria to York Castle with many on pieces including some strips and blocks on issues front Queen Victoria to Queen Elizabeth. Some duplication. Also two small studies of 1889-91 1ed and 1917 1½d war stamp (approx 3,000)	50	55
	1217	1887-1971 a selection of envelopes (790), cards (11) pieces (2) and fronts (2) bearing a wide range of values and showing a comprehensive collection of town and village cancellations (640 different) from Aberdeen to Ythanside. (approx. 1600)	80	95
	1218	Temporary Rubber Date-stamps: 1890 (c.) - 99 (c.) a selection on loose stamps with date-stamps for Albany, Alligator Pond (2), Bartons, Belvedere, Bog Walk, Brass Rier, Catadupa, Cedar Valley (2). Clonmel, Davis Town, Deeside, Enfield Guanaboa Vale, Hect	60	92.50
	1219	1900-40 (c.) a selection on piece or off paper from Adelphi to Wood Hall with a few complete strikes and 55 different offices. (86)	125	70
	1220	1924, two covers to London, each bearing ½d green with different 'MUNRO COLLEGE' oblong date-stamps and 1942 cover to Kingston with unframed two line 'ST PAULS' date-stamp, some rust marks. (3)	14	19
	1221	1940-71 a selection of envelopes (242) and cards (25) bearing a variety of values and showing wide range of date-stamps from Aberdeen to Lucky Valley. Also some circular town stamps and a few commemorative cancellations. (360)	40	44
	1222	1940-70 a selection of pieces (287) and stamps (5) showing a wide range of temporary rubber date-stamps from many different towns and villages from Aboukir to York Pen, some on strips and blacks, mostly all different and all in issues of George VI and Eli	55	
	1223	a similar lot with over sixty different towns or villages from Aberdeen to York Pen, mostly on pieces on issues of George VI and Queen Elizabeth. Some duplication. (about 800)	175	

Robson Lowe Sale of Edwin Erickson Jamaica, 6 Sept 1972

img	Lot	Jamaica	Est	Real GBP
	1224	- another covering the period 1941-69 with pieces (200) and stamps (11), mostly all different from Albion Mountain to York Pen. (351)	45	
	1225	1940 (c.) - 70 (c.) an all different selection (showing in some cases different types from the same office arranged alphabetical in small stock leaves. (392)	65	42
	1226	1943-71 covers or postcards etc., about 221 in all, of which perhaps a third are commercial and in all different selection. (339)	40	38
		THE NUMERAL OBLITERATORS		
	1227	A01: Great Britain used at Kingston: 1858-60 1d (pair), 4d (3 pairs). 6d (pair and strip of three) and 1/- and duplex types 4d with strip of three and three pairs and 6d on piece. some faults, fair to fine strikes. (24)	30	40
	1228	A01 Great Britain used at Kingston: 1d (2), 4d (4), 6d (6) and 1/- and duplex 1d, 4d (3) and 6d (4) two on piece, some faults). (21)	20	35
	1229	A01 Great Britain used at Kingston: 4d on spotted cover and 6d (4, three on half cover and the other on separate covers) and 4d (2, on separate duplex covers). (7)	30	52.50
	1230	A01 Great Britain used at Kingston: 4d on faded cover. 6d on cover and 4d duplex on cover. some faults. (3)	20	24
img	1231	A01 Great Britain used at Kingston: 4d wing-margined pair (heavy crease) used on large part local stained cover and a non wing-margined pair on cover, one stamp creased at top. (4).	12	52.50
	1232	A01 Great Britain used at Kingston: 6d pair used oii cover to Bengal and cancelled with central 'A01'. (2)	20	60
img	1233	A01 Great Britain used at Kingston: 10.5.60 cover to Mandeville with eleven 1d values cancelled 'A01', three folded over edge of cover and two on back. Two other adhesives have been removed from back. (1).	22	42
	1234	A01 Great Britain used at Kingston: twin type 'A01' 4d pair. straight edge at left on large part cover, slight stains. (2)	20	33
	1235	A01 Great Britain used at Kingston: twin type 'A01' 6d wing-margined pair, small faults and rather stained, unpriced (2)	20	29
	1236	1860-63 wmk. Pineapple 1d (3), 2d, 3d 4d 6d and 1/- (2) and duplex 1d 2d, 3d, 4d,, 6d (2) and 1/- (3), some faults, mainly good legible strikes (18)	35	30
	1236a	1860-63 wmk. Pineapple, 1d (3), 2d, 3d (2), 4d, 6d (4) and 1/- (2) and 1857 postal fiscal and duplex type 1d (2), 2d, 3d, 4d (2), 6d (2) and 1/- (5), fair to fine. (27)	25	22
	1237	1860-63 wmk. Pineapple, 1d (2), 4d, 6d (5, four on one cover) and 1/- (2). also 3d and 1/- together used on six separate covers, some faults. (12)	32	48
	1238	1860-63 wmk. Pineapple, 4d, 6d (2) and 1 /- and duplex type 6d used on four separate covers, two creased (15)	18	44
	1239	1860-63 wmk. Pineapple, 1d and 2d on piece, 4d (faults) and 3d on piece, 4d, wing-margined strip of four and 1/- pair on piece, all with duplex types and all but one show a date. (10)	13	11
	1240	1860-63 wmk. Pineapple, 4d, 6d and 1/- (2, on separate pieces) and 1870 CC 2d, 3d (3, one on small piece) and 6d all with duplex cancellations. (9)	7	4.50
	1241	1860-63 wmk. Pineapple, 1d (3), 2d (4), 3d (4), 4d (2), 6d (3) and 1/- (4, one the dollar variety), fair to fine. (20)	30	26
	1242	1860-63 wmk. Pineapple, CC ½d (3), 1d, 2d, 3d (31), 4d, 6d and 1/- and postal fiscal 5/- all with type 'D', 1d (4), 2d (2), 4d (3) and 1/- (3) and CC ½d (3), 1d (2), 2d (2), 3d (2), 4d (2), 6d (4, one in red) and 1/- (7, one the dollar error) and 5/-, fair to fine (48)	22	28
	1243	1860-63 wmk. Pineapple, CC ½d, 2d, 6d and 1/- in pairs, 1d block of four, 2d and 1/- in strips of four and 6d, strip of five, all type E, CA 1d 2d and 4d itll type E and this type also on stamps of G.B. Q.V. 1d and 2½d and K.E. 1d, 1½d and 2½d, mainly good to fine	23	20

Robson Lowe Sale of Edwin Erickson Jamaica, 6 Sept 1972

	img	Lot	Jamaica	Est	Real GBP
		1244	1860-63 wmk. Pineapple, bisected diagonally, lightly tied to front to Browns Town, some perfs. clipped, also a fake. (2)	25	
	img	1245	1860-63 wmk. Pineapple, 1d, diagonal bisect used with another diagonal bisect (se-tenant to a whole stamp) on dated piece, some small stains. (3).	60	40
		1246	wmk. CC values to 5/- type 'F', wmk. CC values to 5/- (2) and CA 1d (2), 2d (4) and 4d (3) type 'G', mainly fine with twenty-four duplicates. (118)	50	40
		1247	wmk. CC 1d (4), 2d (8), 3d, 4d, 6d and 1/- used on seven covers and showing three different types of cancellations. (16)	22	67.50
		1248	ditto, 1d, 2d (7) and 4d used on five covers with two different types of cancellations. (9)	13	52.50
		1249	wmk. CC 1d (2) and 2d (fault) used on cover to London showing 'JAMAICA / SHIP MAIL' date-stamp, red '1½' and Liverpool Paid date stamp, some rust stains. (3)	8	60
		1250	wmk. CC 1d pair used on part of 'Call's News Letter'. (2)	7	28
		1251	1900, 1901, 1902 and 1903 covers or cards with charge marks (3) or stamp cancelled out by 'A01', type E, one item from the Boer War. one from Chile, one from Rhodesia and one from Cape Town (with G.B. 1d). (4)	25	40
	img	1252	A 27 (Alexandria) Pine 1d, 2d, 3d, 4d, 6d and 1/-, CC ½d, 1d, 2d, 4d and 6d, CA ½d 1d (both). 2d and 4d and 1889-91 1d, 2d (faded) and 2½d, selected strikes. (19).	40	36
		1253	Pine 1d (3) and 4d, CC 1d (4), 2d (2), 3d and 6d, CA ½d, (9), 1d (3) and 2d (3), 1889 1d (5) and 2d, 1890 2½d on 4d, Officials 1d and 2d and 1d blue postcard, poor to fine strikes. (37)	35	
		1254	A 28 (Annotto Bay): First type on Pine 1d (4), 2d, 3d, 4d (5), 6d (4). 1/- (3) and postal fiscal 1d, CC ½d(4), 1d (5), 2d (3), 3d (4). 4d (3), 6d (2) and 1/- and second type on CC ½d (4), 1d (4), 2d, 3d (3). 4d (4) and 6d and CA 1d, 2d (both) and 4d, mainly fair to fine (62)	18	16
		1255	First type on CC 4d (4) used on 1873 (24 June) cover registered to London and said to be the earliest known date of the registered date-stamp. (4)	12	105
	img	1256	'A29' (Bath) 1d, 2d 3d, 4d 6d and 1/- CC ½d, 1d, 2d, 3d, 4d, 6d and 1/- and CA ½d, 1d (both), 2d and 4d, mainly selected strikes. (18).	30	
		1257	Pine 1d (3) 2d 3d 4d (2) 6d (3, with a pair) and 1/- CC 1d (5) 2d (2) 4d 6d 1/- CA 1d (both in pairs) and 2d 1889 1d and 2d and postal fiscal 1d, poor to fine strikes (29)	20	16
		1258	'A30' (Black River): (Great Britain used at Black River. 1d stained with poor strike, 4d with good (rather smudged) strike and another 4d with clear strike heavily creased on cover	15	22
	img	1259	ditto, 4d vertical strip of three used on cover to Liverpool with 'Too Late' handstamp, fairly clear strikes, one stamp with perforation faults. (3).	32	57.50
		1260	Pine 1d, strips of five and three, a pair and three singles. 2d (2), 3d (3, with a pair). 4d (4, with a pair), 6d (2) and 1/- (3) and CC ½d 1d (4), 2d (6), 3d (2), 4d (2), 6d and 1/- . mainly fair to fine. (44)	20	24
		1261	'A31' (Brown's Town): Great Britain used at Brown's Town: 4d used on large piece showing both Brown's Town and Alexandria cds (both smudged) and good strike of the obliterator. (1)	20	21
	img	1262	Pine 1d, 2d, 3d, 4d, 6d and 1/- and CC ½d, 1d, 2d 3d 4d, 6d, and 1/- mainly fine and selected strikes. (13).	18	17
		1263	Pine 1d (3 with a pair), 2d, 3d single and pair, 4d, 6d (7, with a block of six) and 1/- and CC ½d, 1d (4), 2d (4), 4d and 1/-, poor to fine strikes. (27)	22	17
		1264	Pine 1d pair used on stained 1873 cover to Falmouth with m/s 'missent to Mo. Bay', light strike, CC 2d on front and 6d pair off paper. (5)	12	13

Robson Lowe Sale of Edwin Erickson Jamaica, 6 Sept 1972

img	Lot	Jamaica	Est	Real GBP
	1265	'A32' (Buff Bay): Great Britain 6d (straight edge), Pine 1d, two pairs, 2d, 3d and 1/- CC ½d (4), 1d (5). 2d (5), 6d (2) and 1/-, CA ½d, 1d, 2d (3), 3d and 4d also three 2d values on separate covers and 1889 1d (7) and 2d mainly good to	20	24
	1266	Pine 1d, 2d, 3d, 4d, 6d and 1/-, CC ½d 1d 2d, 3d, 4d, 6d and 1/-, CA ½d, 1d (both), 2d (both) and 4d, 1889 1d, 2d and 2½d 1890 2½d, Officials ½d, (both), 1d and 2d and postal fiscal 1d mainly selected strikes. (28)	15	15
	1267	A 33 (Chapelton): Great Britain used at Chapelton 4d (fair) and 6d (poor) strike off paper and 4d (defect,) on worm-holed cover to which it may not belong. practically illegible strike	20	21
	1268	Pine 1d (3), 2d, 3d (2), 4d, 6d, and 1/- (3), CC ½d (6). 1d (5), 2d (2), 3d (2), 4d (2). 6d (2) and 1/- (3). CA ½d (2) 1d (7), 2d (3) and 4d, 1889 1d (3) and 2d, Official 2d, postal fiscal 1d and 1/- and 1d, postcard (defective). Mainly fair to fine (54)	35	26
img	1269	'A34' (Claremont) : Pine 1d, 2d, 3d, 4d and 1/-, CC ½d 1d, 2d, 3d, 4d 6d and 1/-, CA ½d, 1d (both), 2d (both). 3d and 4d 1889 1d and 2d (faded) and Official ½d, selected strikes, some faults. (22).	20	
	1270	Pine 1d (31). 2d, 6d and 1/- CC ½d (3), 1d (3), 2d (2). 6d (2) and 1/- CA ½d (3), 1d (2), 2d (13). 1889 1d (3) and 2d and 1d blue postcard fair to fine strikes. (30)	12	14
img	1271	Pine, 1d blue bisected diagonally and used on portion of 30.11.1867 'Public Opinion' with whole 1d (tear), clear strike. (2).	45	
img	1272	Pine, 1d blue bisected diagonally used on 14.11.1868 copy of the same newspaper. (1).	40	
		NUMERAL OBLITERATORS		
	1273	'A35' (Clarendon): Great Britain 4d and 6d with good strikes, Pine 1d (2), 2d, 3d, 4d, 6d (2) and 1/- (3), CC ½d (6), 1d (4), 2d (2), 4d and 1/-, CA ½d, 1d cancelled 'A40' (4), 2d and 4d, 1889 1d (5), Officials ½d (both) and 1d and postal fiscal 1d, mainly fair to fine	25	24
img	1274	Pine 1d, 2d, 3d, 4d, 6d and 1/-, CC ½d 1d 2d, 3d, 4d, and 6d, CA ½d, 1d (both), 2d (both), 3d and 4d, 1889 1d, 2d (faded) and 2½d and 1890 2½d on 4d, mainly selected strikes. (23).	20	16
	1275	A36' (Dry Harbour): Great Britain used at Dry Harbour, 4d, central strike	£50	46
	1276	Pine 1d, 2d, 4d and 6d with manuscript '36' and Kingston cancellations.(4)	70	52.50
img	1277	Pine 1d, 2d, 3d, 4d, 6d and 1/-, CC 1d, 1d, 2d, 3d, 4d and 6d and CA ½d, 1d (both), 2d and 4d and 1889 1d and 2d (faded), mainly selected strikes. (19).	35	28
	1278	Pine 3d, strip of four, 4d and 6d pair, CC ½d, 1d (3), 2d (8) 4d and 1/- (2), CA ½d (3), 1d (2), 2d (5), 1889 1d (2) and-2½d and Official ½d, mainly good to fine (36)	35	26
	1279	'A37' (Duncans): Great Britain used at Duncans: 4d (2, one part strike on small piece) and 6d (poor with part cds), the first two clear. (3)	5	36
img	1280	Pine 1d, 2d and 4d on dated piece, 3d, 6d and 1 /- (straight edge) and CC ½d, 1d, 2d, 3d, 4d 6d (straight edge) and 1/-, mainly selected strikes. (13).	30	
	1281	Pine 1d (2), 2d, 3d, 4d, 6d (3) and 1/- (2), CC 1d (2), 2d (2) and 1/- (2), also 2d on cover, mainly good to fine. (17)	15	20
	1282	'A38' (Falmouth): Pine 1d, 2d, 3d, 4d, 6d and 1/- and CC ½d, 1d, 2d, 3d, 4d, 6d and 1/-, selected strikes. (13)	20	
	1283	Pine 1d (3), 2d, 3d (2), 4d (4, with a strip of three), 6d (5) and 1/- (5), also 3d much stained on cover, CC ½d, 1d (3), 2d (13), 3d, 4d (4), 6d (2), 1/- and 2/-, also 1d (2), 2d (3) and 6d used on three covers or part covers	50	
	1284	CC ½d (2), 1d (4), 2d (3), 3d, 4d (2), 6d, and 1/- and postal fiscal 1d, fair to fine strikes. (15)	30	

Robson Lowe Sale of Edwin Erickson Jamaica, 6 Sept 1972

img	Lot	Jamaica	Est	Real GBP
img	1285	'A38' (Up Park Camp): CA 2d rose pair on cover to London with fairly clear strike. The reverse bears a fair strike of the temporary oblong date with manuscript 26.6.84 in centre.	20	50
img	1286	CA 1d and 2d with clear strikes, the 1d with fault. (2).	25	
	1287	CA 2d, part strike and 4d, fine strike. (2)	25	
img	1288	'A39' (Falmouth): Great Britain 6d used on cover 25.11.1858 to London and cancelled 'A01', the cover has legible Falmouth cds	25	65
	1289	'A39', 6d pair on piece with 'A01' and Falmouth cds, also 1d, 4d and 6d (on small piece), all three more or less stained (5)	25	18
	1290	'A39', 1d (stained), 4d and 6d (wing-margined), fairly clear to clearly struck. some small faults	15	16
	1291	'A39', 6d (fault) used on 1.4.59 cover to Kingston, fairly clear strike	15	19
	1292	Pine 1d (2), 2d (2), 3d, 4d, 6d (2) and 1/- with fair to fine strikes of 'A39' which was used at Falmouth from 1.3.59 to about 1.11.62 and at Flint River from about 1.11.62 to about 1893. (9)	60	
img	1293	'A39', 2d and 4d used together on 1861 cover to London with four incomplete strikes of the obliterator.	30	48
	1294	(Flint River): CC 1d, 1d and 4d (wing-margined pair), fine. (6)	50	
	1295	CC ½d, 2d, 4d, 6d and 1/-, fair to fine strikes, some faults. (5)	30	
img	1296	CA ½d, 1d, 2d (both) and 4d (fault) and 1889 1d, 2d (faded) and 2½d selected strikes. (8).	80	
	1297	CA ½d and 1d in pairs, 1889 1d, 1890 2½d on 4d and Official ½d and 1d clear to good strikes. (8)	20	20
	1298	'A40' (Flint River): Pine 1d, 2d, 3d, 6d and 1/- (Gayle) CC ½d, 1d, 2d, 3d, 4d, 6d and 1/-, CA ½d, 1d (both), 2d (both), 3d and 4d and 1889 1d, 2d (faded) and 2½d, selected strikes, some faults. (22)	95	
	1299	Pine 1d and 2d cancelled in blue. CC 1d (3), 2d, 3d, 4d, 6d and 1/- (on dated piece), CA ½d, 1d and 2d, 1889 1d (4) and Officials ½d (both), good to fine strikes. (18)	15	27
	1300	(Gayle) 1d post card to Port Maria, and 2d on 1d postcard to Ewarton both cancelled 'A40' and showing in all, seven date stamps on face, some stains	17	
img	1301	'A41' (Gayle): Great Britain used in Gayle 4d with light Gayle cds over cancelled 'A01' and used on large part cover to Kingston.	20	20
img	1302	'A41', 6d lightly cancelled on 20.9.59 cover to Four Paths. slight staining.	50	70
	1303	Pine 1d (2), 1d bisected on piece, 2d (4), 3d, 4d (2, one straight edge), 6d (2) and 1/-, mainly fine legible strikes. (13)	80	52.50
img	1304	Pine 1d, a fine strip with fairly clear strikes. (5).	20	17
	1305	CA ½d, 1d (2), 2d (3), 3d, 4d, 6d and (repair), all but the last selected strikes. (10)	40	
	1306	CC 1d bisected on part front and 4d, tied on dated registered piece, the first clearly cancelled (2)	60	
	1307	CA ½d, 1d blue (2), 1d red (4, with a pair) and 2d (3), 1889 1d and 2d, Official ½d pair and postal fiscal 1d, and 3d., all in black, also CA ½d. 1889 1d (2). 2d pair, 1890 2½d on 4d and Official 1d cancelled in mauve, 'A41' was used at Gayle from 1.3.59 to about 1.11.62, at Golden Spring about 1.11.62 to about June 1890 and at Stony Hill from about June 1890 to about 1893 (23)	100	
	1308	A 42 Pine 1d (3), 2d (3), 3d (3), 4d (2), 6d (3) and 1/- (3), CC, 1d (2), 1d (3), 2d (4), 3d (2), 4d (2), 6d (2) and 1/- (2), CA ½d (3), 1d (5), 2d (3) and 4d (2), 1889 1d to 2½d, 1890 2½d on 4d, Official 1d and 2d and Postal Fiscal 1d. 'A42' was used at Golden Spring from 1.3.59 to 1.11.62 and at Gordon Town from 1.11.62 to about 1893 (54)	32	33
img	1309	A 42, 1d (2), 3d and 6d pair used on 1866 envelope (flap missing) to India via London. fine strikes of the 'A42' and showing on the reverse cds of Gordon Town and Kingston. Small faults. nevertheless, a very attractive cover. (5).	25	87.50

Robson Lowe Sale of Edwin Erickson Jamaica, 6 Sept 1972

img	Lot	Jamaica	Est	Real GBP
	1310	A43 Pine 1d (4), 3d, 4d, 6d (3) and 1/- (2) and CC , ½d (6, with a strip of four), 1d (11, with three multiples), 2d (2), 3d, 4d, 6d and 1/-, 'A43' was used at Gordon Town from 1.3.59 to 1.1 1.62, at Goshen front 1.1 1.62 to 1.10.83 and at Santa Cruz from 1.10.83 to about 1893 (34)	20	19
	1311	(Goshen) : CC 2d (2) and 1/- used on two separate covers, stamps lightly and illegibly cancelled, some small faults	15	14
	1312	(Goshen): 1877 1d red and blue 'floriate' card cancelled 'A43' and (Santa Cruz) CA 1d rose, strip of four, 2d slate pair and 4d used on three separate covers. fair to fine strikes. (8)	20	42
	1313	(Santa Cruz): CA ½d, 1d (both), 2d (both), 3d and 4d. 1889 1d, 2d (faded) and 2½d, 1890 2½d on 4d and Officials ½d, 1d and 2d, mainly selected strikes. 2 (14)	25	
	1314	CA ½d, 1d and 2d (both), all in pairs , 1d and 2d, 1889 1d (2) and 2d (strip of three), official -1d and 1d (pair) and postal fiscal 1d, good to fine strikes. (19)	25	
	1315	'A44' (Goshen): Great Britain used at Goshen: 1d strip of five and a single cancelled 'A01' on 22.10.58 cover to Liverpool. cover shows Goshen cds, another strip has been removed at top, and several stamps are defective. (6)	15	21
	1316	'A44'. as last. 6d strip of four cancelled 'A01' on 25.6.58 cover to London showing Goshen cds (4)	40	115
	1317	'A44'. as last, 1d, 4d, and 6d (2, one on piece) all with legible cancellations. (4)	15	16
	1318	'A44'. as last. 1d, pair (stains) and 4d used on large part 1859 cover showing Goshen cds and 6d used on 1859 cover to Kingston. (3)	40	50
	1319	Pine 1d stained strip of four on piece and two singles off paper, 2d, 3d, 4d, 6d (2) and 1/- (2) mainly fine. 'A44' was used at Goshen from 1.3.59 to 1.1 1.62 and at Grange Hill front 1.11.62 to about 1893, (13)	40	
img	1320	(Grange Hill): CC ½d, 1d, 2d, 3d, 4d, 6d and 1/-, CA ½d, 1d (both), 2d (both) and 4d, 1889 1d, and 2d (faded) and postal fiscal 1d, selected strikes, (16).	50	31
	1321	'A45', CC ½d (4, with a fine strip of three), 1d (3), 2d, 4d and 6d. CA ½d (3). 1d (4), 2d (both), 1889 1d, Officials ½. (both) and postal fiscal ½d pair. also 1d blue postcard, mainly good to fine	50	
img	1322	A 45 (Grange Hill): Great Britain used at Grange Hill: 6d used on 25.12.58 cover to London lightly cancelled 'A01' and with m/s over stamp. The 1347 'A51' (Lucca): Grange Hill cds (with m/s date) appears on the cover. (1).	25	30
	1323	Pine 1d 2d (4 with a strip of 3) 3d 4d 6d (2) and 1/- mainly fine. 'A45' was used at Grange Hill from 1.3.59 to 1.11.62 and at Green Island from 1.11.62 to about 1890 (10)	30	28
	1324	(Green Island): CC ½d. 1d, 2d, 4d. 6d and 1/- CA ½d, 1d (both), 2d and 4d, 1889 1d, 2d (faded) and 2½d and Officials ½d (both) and 1d, mainly selected strikes. (17)	20	21
	1325	(Green Island):, CC 1d (3). 2d and 4d. CA ½d (3), 1d, 2d (both) and 4d, 1889 1d 2d (4) and 2½d (3), 1890 2½d on 4d and Officials ½d (3, with the two different). mainly fine strikes. (24)	20	
	1326	'A46' (Green Island): Great Britain used at Green Island 4d pair on piece sharing a central woolly impression, some faults	12	20
	1327	'A46'. 4d and 6d wing-margined copies. fairly legible strikes	8	13
img	1328	Pine 1d, 3d and 6d, good to fine central strikes.	20	
img	1329	Pine 1d and 6d (some perfs. trimmed) centrally cancelled	17	
	1330	Pine 1d wing-margined pair used on small piece, some faults, 'A46' was used at Green Island from 1.3.59 to 1.11.62, at Highgate from 1.11.62 until its closure in 1869 and at Siloah from its opening about October 1869 to 1893	30	

Robson Lowe Sale of Edwin Erickson Jamaica, 6 Sept 1972

img	Lot	Jamaica	Est	Real GBP
	1331	(Siloah) CC ½d, 1d. 2d. 3d, 4d. 6d and 1/- CA ½d (2), 1d (both). 2d 3d and 4d, 1889 1d, 2d and 2½d. 1890 2½d on 4d and Official ½d, selected strikes. (20)	50	
	1332	ditto, CC ½d (4). 1d (4), 2d, 3d (2), 4d. 6d and 1/-. CA ½d, 1d (3), 2d (both). 1889 1d (3), 2d and 2½d, 1890 2½d on 4d, Official ½d, postal fiscal 1d and 1d blue postcard, mostly good to fine	50	
	1333	'A47': Great Britain used at Highgate: 4d with attractive central strike and margin, (2) Pine 1d, 2d. 3d, 4d and 6d cancelled 'A47'. This obliterator was used at Highgate from 1.3.59 to 1.11.62 and Hope Bay from 1.11.62 to about 1893. (6)	30	46
	1334	(Hope Bay): CC ½d, 1d, 2d, 3d, 4d and 6d, CA ½d, 1d (both), 2d (both). 3d and 4d, 1889 1d, 2d (faded) and 2½d and 1890 2½d on 4d, mainly selected strikes. (17)	30	
	1335	(Hope Bay):, CC -1d. 1d (3), 2d (2), 4d and 6d, CA ½d, 1d (both), 2d and 4d, 1889 1d, 2d and 2½d, 1890 2½d on 4d and Officials ½d, 1d and 2d, also 1889 1d on cover, mainly good to fine. (21)	25	24
	1336	'A48', : Pine 1d, 2d, 3d, 4d, 6d and 1/-. selected strikes. some faults. (6)	35	
	1337	Pine 1d (2), 2d, 3d and 6d, fair to good 'A48' was used at Hope Bay from 1.3.59 to 1.11.62 and from Lilliput 1.11.62 to its closing in 1874. (5)	20	15
img	1338	(Lilliput): CC ½d, 1d, 2d, 3d. 4d. 6d and 1/- mainly good to fine strikes. to early 1870s, (7).	50	
	1339	ditto. CC ½d pair, 1d, 2d and 4d, clear to fine strikes. (5)	25	
	1340	'A49' (Lilliput): Great Britain used at Lilliput: 6d cancelled 'A01' on piece with Lilliput cds below, also 4d (poor) and 6d (fine strike) off paper. (3)	20	15
	1341	1d (6) on part entire to London dated 25.1.58 cancelled 'A01' and showing poor to fine strike Lilliput cds below, with 'JA' of date inverted (6)	30	55
img	1342	6d on 11.3.59 entire (horizontal crease) to London cancelled 'A49' with Lilliput cds alongside, very fine strikes and most attractive. A date has been written across the stamp by the addressee.	25	95
	1343	Pine 1d (7, with a strip of four.), 2d (2). 3d (2), 4d (2), 6d (3) and 1/- (3) nearly all clear strikes. 'A49' was used at Lilliput from 1.3.59 until 1.11.62 and at Lucea from 1.11.62 to 1890. (19)	30	36
	1344	(Lucea): CC ½d (4), 1d (2), 2d (10), 3d (3), 4d, (2). 6d (2) and 1/- (2), CA ½d 1d (5), 2d (6), 3d and 4d (3), 1889 1d (2), 2d (4). Official ½d (thin) and 1d and postal fiscal 1d (3), mainly good to fine	30	
	1345	(Lucea): 1d postcards (3, one with additional 1d rose) and 2d (2) used on 1d, poor to fine cover, all cancelled 'A49'. good to fine. (6)	20	16
	1346	'A50' (Malvern): Pine 1d (2), 2d (2). 3d (3), 4d, 6d (2) and 1/- (2), CC ½d (3), 1d (3), 2d (9), 3d (2), 4d (3), 6d (2) and 1/- CA ½d (2), 1d (3), 3d (2) and 4d, 1889 1d (2), 2d (4) and 2½d (2). 1890 2½d on 4d (2), postal fiscal 1d and 1d post card, poor to fine strikes	45	
	1347	'A51' (Lucea): Great Britain used at Lucca: 4d, three shades, one with wing- margin. all clearly, cancelled (3)	15	17
img	1348	4d defective pair used on 28.2.59 entire (filing crease) to Spanish Town with manuscript 'P.O. Lucea' and showing cds of Lucea and Spanish Town on the reverse. The day before the numeral obliterator was put into use. (2).	40	56
	1349	Pine 1d, 2d. 3d. 4d, 6d and 1/-, -. CC ½d. 1d, 2d, 3d, 4d, 6d and 1/-, CA ½d, 1d (both), 2d, 3d and 4d, 1889 1d and 2d, selected strikes. (21)	30	20
	1350	Pine 1d (2), 2d 3d (strip of three). 4d pair, 6d and 1/- (4, with a strip of three), also 6d with cds, CC ½d (7), 1d (3), 2d (2). 3d, 4d and 1/- postal fiscal 1d and 3d (2), CA ½d (5), 1d (both). 2d (3), 3d and 4d, 1889 2d and 1d blue post card, 'A51' was used at Lucea from 1.3.59 to 1.11.62 and at Manchioneal from 1.11.62 to about 1890 (46)	45	42

Robson Lowe Sale of Edwin Erickson Jamaica, 6 Sept 1972

img	Lot	Jamaica	Est	Real GBP
	1351	A 52: Pine 1d (4), 2d, 3d (2), 4d (2), 6d and 1/- (2), also 3d (strained) on cover, CC ½d (2) 1d (2), 2d (4), 3d (2), 4d (3), 6d (2) and 1/- (3, one the dollar variety) and CA 1d (4), 2d (6) and 4d (2), mainly fair to fine. 'A52' was used at Manchioneal from 1.3.59 to 1.11.62 and at Mandeville from 1.11.62 to early 1885 (43)	30	25
	1352	'A53' (Mandeville): Great Britain used at Mandeville: Two 6d cancelled 'A01', and used on separate covers to Liverpool and showing Mandeville cds on cover, also 4d, two off paper, one clearly cancelled (4)	25	30
	1353	Original issue of the obliterator: Pine 1d (2), 2d, 3d, 4d, 6d and 1/- (3 shades). (9)	3	
	1354	ditto, CA ½d, 1889 1d (2. one on cover). 2d and 2½d and Official ½d., clear 2 strikes. (6)	25	
	1355	Renewal of the obliterator Pine 1d and 3d, very rare, the first with wing- margin. (2)	40	24
	1356	ditto, CC ½d (5), 1d (5). 2d (4), 3d, 4d (3). 6d and 1/-, CA ½d (4), 1d (2), 2d (3), 4d and 6d. 1889 1d (3). 2d (6) and 2½d, 1890 2½d on 4d and official -1d (thin). fair to fine, 'A53' was used at Mandeville from 1.3.59 to 1.11.62.	25	29
	1357	A 54 (May Hill): Great Britain used at May Hill: 1d (stained), 4d (2) and 6d, good to clear strikes	20	19
	1358	Pine 1d (4, with a pair), 2d (2). 3d, 4d, 6d (2) and 1/- (dollar variety), some straight edges and other faults. fair to fine strikes. (11)	80	
	1359	Pine 6d, two, one on cover, the other on part cover, clearly struck, one with fault. (2)	25	28
	1360	CC ½d (2), 2d, 3d, 4d and 6d with good to clear strikes. very rare, 'A54' was used at May Hill from 1.3.59 to 1.11.62 and at Mile Gulley from 1.11.62 to early 1870s. (6)	70	
	1361	'A54' (Mile Gulley, large and second type): Pine 1d, 2d, 3d, 6d and 1/-. CC ,1d, 1d, 2d, 3d, 4d, 6d and 1/- and CA ½d, 1d, 2d and 4d. mainly good to fine strikes. (16)	50	
	1362	Pine 1d (5, with a strip of three) and 3d strip of three, CC 1d (6. with strip of three and pair), 1d (7, with three pairs) and 2d (3, with a pair) and CA 2d pair. poor to fine strikes. (26)	75	
img	1363	'A55' (Mile Gully): Great Britain used at Mile Gully: 1d (2) ,and 4d used together on 5.4.59 cover to Kingston, two clear strikes, slight horizontal crease. (3).	45	60
	1364	'A55', 6d and Pine 1d (4). 2d (2). 3d. 4d (2). 6d (2) and 1/-, mainly fine, 'A55' was used at Mile Gully from 1.3.59 to 1.11.62 and at Moneague from 1.11,62 to about 1892. (13)	25	
img	1365	(Moneague): CC ½d, 1d, 2d, 3d, 4d. 6d and 1/-, CA ½d, 1d (both), 2d (both) and 4d, 1 8 90 2½d on 4d and 1889 1d, 2d and 2½d, mainly fine strikes. (17).	28	31
	1366	(Moneague): CC 1d (5). 1d (3) and 2d, postal fiscal 3d. CA ½d, 1d (both), 2d and 4d, 1889 1d and 2d (faded), postal fiscal 1d and Officials ½d (2) and 1d, poor to fine strikes. (21)	17	
	1367	'A56', first type: Pine 1d (6), 2d, 3d (3), 4d (3), 6d (3) and 1/- (3), also 1d (8) - and 1/- used on separate covers and CC ½d, 1d (3), 2d (2), 3d, 4d, 6d (7) and 1/- (2) and second type (Montego Bay) CC ½d, 1d, 2d (4, with two on cover), 3d, 4d (2), 6d (2), 1/- (2), and 5/- and CA ½d, 1d (3), 2d (3), and 4d (2), mainly fair to fine, 'A56' was used at Moneague from 1.3.59 to 1.11.62 and at Montego bay from 1.11.62 to about 1876	32	31
	1368	'A57' (Montego Bay): Great Britain used at Montego Bay: 4d a pair ,and three singles and 6d (2), poor to fine strikes. (7)	22	16
img	1369	ditto, 4d pair on 12.5.59 entire (horizontal filing crease) to Kingston cancelled 'A57', fine strikes and showing Montego Bay cds on reverse.	35	55

Robson Lowe Sale of Edwin Erickson Jamaica, 6 Sept 1972

img	Lot	Jamaica	Est	Real GBP
	1370	Pine 1d, 2d, 3d, 4d, 6d and 1/-, CC ½d, 1d, 2d, 3d, 4d (2), 6d and 1/- CA 1d, 1d (3), 2d (both) and 4d. 1889 1d and 2d ,and postal fiscal 1d mainly selected strikes. (24)	15	
	1371	Pine 1d, 2d, 3d, 4d (3), 6d (2) and 1/- (2). also strip of three 4d used on and 2d and attractive cover. CC ½d (7), 1d (3), 2d (7), 6d and 1/-, CA ½d (2), 1d, 2d (both) and 4d, 1889 1d and 2d (2. faded). postal fiscal 1d. officials ½d 1d and 2d, also 2d CA on cover (46)	30	20
	1372	'A58' (Montpelier): Great Britain used at Montpelier: 6d with clear strike. some perfs. pulled With R.P.S. Certificate (1956). (1)	50	80
	1373	(Bluefields): Pine 3d (wing-margin), 6d and 1/- two clear and one fairly legible strike	15	21
	1374	CC ½d, 1d (3), 2d (5), 4d (2) and 6d (3), fair to fine strikes. (14)	20	19
	1375	ditto, CA ½d (4), 1d (3). 2d (both), 3d and 4d, 1889 1d (7), 2d (faded) and 2½d, 1900 1d (2), 1901 1d and official ½d (both), fair to fine strikes	15	11
img	1376	'A59' (Morant Bay): Great Britain used at Morant Bay 4d and 6d (wing-margin) clearly struck, the last stained (2).	10	13
	1377	ditto, as last, 4d and 6d (wing-margin) clearly struck to fine. (9)	10	12.50
	1378	Pine 1d (2), 2d (2), 3d (2), 4d (2), 6d (2) and 1/- (2). also 4d on cover from which other adhesives have been removed, CC ½d, 1d (3), 2d (7), 3d, 4d (2), 6d, and 1/-, and CA ½d (3), 1d (5). 2d (4), 3d and 4d (2), 1889 1d (8), 2d (3, faded and 2½d on 4d and postal fiscal 1d, good to fine strikes, 'A59' was used at Morant bay from 1.3.59 to 1.11.62 and at Newport from 1.11.62 to about 1892 (58)	35	37.50
	1379	ditto, 1/- (3) used on 24.1.61 cover to Derby with Morant Bay backstamp and 3d (2) used on 8.9.78 cover to Mansfield, clear strikes	22	50
	1380	'A60' (Ocho Rios): Pine 1d, 2d, 3d, 4d, 6d and 1/-, CC: 1d (2), 1d, 2d (2), 3d on dated piece. 4d, 6d (2) and 1/-, CA ½d, 1d (both). 2d (both) and 4d, mainly selected strikes and showing different types. (22)	25	44
	1381	Pine 1d, 3d, 4d, 6d and 1/-, (2, one the dollar variety), also two 1d on cover from which another stamp has been removed CC, 2d (2) and 6d and second type ½d, 1d, 2d (3), 4d and 6d, also 1d blue card	50	40
	1382	A 61' (Old Harbour): Pine 1d (3, one a stained bisect on piece, doubtful), 2d,. 3d (2), 4d (2), 6d (2) and 1/- (2), also two other 6d on 1867 cover (addressee's and a single name scored out) and CC ½d, 1d (2), 2d (2), 3d, 6d (4,) and 1/-. (25)	15	12
	1384	ditto. as last, 4d used on 30.4.59 cover to Kingston. some perfs. trimmed	17	42
img	1385	Pine 1d, 2d, 3d, 4d, 6d and 1/-, all struck sideways. CC ½d. 1d, 2d, 3d, 4d, 6d and 1/-, CA ½d. 1d (both). 2d (both) and 4d. 1889 1d. 2d (faded) and 2½d and 1890 2½d on 4d, nearly all selected strikes. (23).	18	
	1386	Pine 1d (3), 2d, 3d, 4d, 6d and 1/- (2). CC ½d, 1d (5). 2d (6), 3d, 4d, 6d and 1/-, also 2d on cover. CA ½d (2), 1d (2), 2d (both) and 4d, also 1d (2, defect) on cover, Official ½d (both). 1d and 2d and postal fiscal 1d, mainly good to fine (40)	32	
	1387	A 63 (Pear Tree Grove): Pine 1d, 2d (2), 3d, 4d, 6d and 1/-. CC ½d, 1d (6), 2d (2) and 4d, CA ½d (3), 1d (4), 2d (3) and 4d, 1889 1d (2) and 2d. 1900 1d and official ½d, 1d and 2d, many fine with clear strikes. (35)	55	65
	1388	'A64' (Port Antonio): Great Britain 6d (stained), Pine 1d (6), 2d, 3d (2). 4d, 6d (2) and 1/- (3), CC ½d (2), 1d (3). 2d (3). 3d (2), 4d (2) and 6d (3), CA (5) ½d (3), 1d (5), 2d (5), 3d (2) and 4d (2), also 2d on cover, 1899 1d (5), 2d (2) and 2½d (2), 1890 2½d on 4d, Official ½d and 1d and postal fiscal 1d (5) with a strip of four) and 3d pair, mainly fine (68)	55	
	1389	CC 1d, 1d, 2d, 3d, 4d and 6d with strikes in blue, good to fine. (6)	25	17

Robson Lowe Sale of Edwin Erickson Jamaica, 6 Sept 1972

img	Lot	Jamaica	Est	Real GBP
	1390	'A65' (Port Morant): (;real Britain 4d pair on dated piece, smudged cancellation, Pine 1d (3), 2d, 3d (2), 4d. 6d (5, with a strip of three) and 1/- (4). CC ½d (2), 1d (4), 2d (3). 3d, 4d, 6d (2) and 1/-, CA - ½d (6). 1d (6). 2d (5), 3d and 4d (3), 1889 1d and 2d (5), postal fiscal 1d and 1d blue post card, mainly good to fine (61)	55	
img	1391	'A66' (Port Maria): Great Britain used at Port Maria: 4d used on 5.4.59 cover. just tied by legible strike, (1).	20	34
	1392	Pine 1d. 2d, 3d, 4d, 6d and 1/- CC ½d, 1d. 2d. 3d. 4d, 6d, and 1/-, CA ½d, 1d (both), 2d (both) and 4d. 1889 1d and 2d (faded), 1890 2½d on 4d , and postal fiscal 1d, mainly selected strikes. (23)	30	28
	1393	Pine 1d (2), 2d, 3d and 6d. also 2d on large part cover, CC 2d (2). 1d, 2d (3), 3d, 4d (3), 6d (2) and also 2d on cover, CA ½d (2), 1d (4). 2d (6. two on cover) and 4d (2), 1889 1d (3) and 2d (faded), Official ½d, 1d, (5) and 2d and postal fiscal 1d (3) and 3d, also 1d blue card (50)	35	40
	1394	A 67 (Port Royal): Pine 1d (2), 2d, 3d, 4d. 6d (3) and 1/- (3), CA ½d (4), 1d (3), 2d (2), 3d, 4d (2), 6d (2) ,and 1/- CA ½d (2), 1d (8), 2d (4),3d (2) and 4d (2), 1889 1d. 2d (faded) and 2½d. 1890 2½d on 4d, postal fiscal 1d and 1½d postcard	28	
	1395	'A68' (Porus): Great Britain 4d (2, one fine on piece. one very poor), Pine 1d (3). 2d and 6d, CC ½d (8), 1d 2d (3), 3d. 4d. 6d (2) and 1/- CA ½d (3), 1d (4), 2d (2), 3d and 4d. 1889 1d (4) and 2d, Official ½d and 2d	30	
	1396	Pine 1d. 2d, 3d, 4d. 6d and 1/- CC ½d 1d, 2d, 3d. 4d, 6d and 1/-, CA ½d. 1d (both). 2d and 4d. 1889 1d, 2d (faded) and 2½d and 1890 2½d on 4d, mainly selected (22)	22	22
	1397	CC ½d (2). 1d2d (3), 4d and 6d (2) cancelled in blue or bluish black, good to fine. (9)	18	16
	1398	A 69 (Ramble): Pine 1d, 2d. 3d, 4d, 6d and 1/-, CC ½d, 1d. 2d. 3d. 4d. 6d and 1/-, CA ½d, 1d (both), 2d (both) and 4d, 1859 1d, 2d (faded) and 2½d and 1890 2½d on 4d. mainly selected strikes. (23)	25	23
	1399	Pine 1d (4. with bisect on small piece). 3d. 6d (5, with a strip of four) and 1/-. CC 1d, 2d (2). 4d and 1/-, also 2d stained on cover. CA ½d, 1d (3), 2d, 4d, 1889 1d and 2d (faded), 1890 2½d on 4d, mainly good to fine	25	21
	1400	'A70' (Rio Bueno): Great Britain used at Rio Bueno: 4d (2) and 6d, mainly clear strikes. (3)	20	20
	1401	Pine 1d, 2d,, 3d, 4d, 6d and 1/-, CC ½d, 1d. 2d, 3d. 4d, 6d and 1/-. CA ½d, 1d, 2d (both) and 4d and 1889 1d, 2d (faded) and 2½d. mainly selected (21)	40	32
	1402	Pine 1d (2) and 4d. CC 1d, 2d, 3d and 6d, CA ½d (5), 1d (2) and 4d, 1889 1d (2. one on cover). 2d (strip of three) and Officials 5d (3) and 1d, fair to fine. (24)	35	32
img	1403	A 71 (Rodney Hall): Great Britain used at Rodney Hall, 1d a strip of three and a single used together on 10.1.59 cover to Clarendon. two clear strikes but two stamps with faults. With R.P.S. Certificate (11960). (4).	60	85
	1404	ditto, 4d with part strike. 6d (fault) with clear strike, Pine 1d. 2d, 3d. 4d. 6d (2) and 1/- (2), CC ½d, 1d (3), 2d (5). 3d, 6d (4) and also two 1d on cover and 2d on cover, CA ½d, 1d (9), 2d and 4d, 1859 1d (9). 2d (faded) and 2½d,	80	
	1405	Pine 1d, 2d, 3d, 4d. 6d and 1/-, CA ½d, 1d. 2d, 3d, 4d, 6d and 1/- CA ½d. 1d, 2d (both). 3d and 4d, 1889 1d. 2d (faded) and 2½d, mainly selected strikes, (22)	40	
	1406	A 72 (St. Davids): Pine 1d, 2d, 3d, 4d. 6d and 1/- CC ½d. 1d. 2d. 3d, 4d, 6d and 1/-. CA ½d, 1d (both), 2d, 4d, and 1891 ½d, 18 JF. (20)	40	31
	1407	Pine 1d. 2d, 3d, 6d and 1/- (2. one on opened-out cover). CC 1d. 2d (4), 4d. 6d and 1/- and CA ½d, 1d (3), 2d (2), 4d and Official 1d, fair to fine strikes. (22)	35	28

Robson Lowe Sale of Edwin Erickson Jamaica, 6 Sept 1972

	img	Lot	Jamaica	Est	Real GBP
		1408	'A73', (St. Ann's Bay): Great Britain used at St. Ann's Bay: 4d pair with central date-stamp, 4d (2) and 6d (on slightly spotted cover) cancelled 'A73'.	45	35
	img	1409	4d (slight crease) on 21.6.59 part entire (a little rugged and worm-eaten) to Spanish Town with fine strike of 'A73' and showing St. Ann's Bay cds on reverse. (1).	20	32
		1410	Pine 1d (3, with doubtful bisect on piece), 2d (3), 3d (2) 5 4d (2). 6d (4) and 1/- (3). CC ½d (4), 1d (5), 2d (5), 3d (3), 4d (3). 6d (4) and 1/- (3), CC 1d (11), 2d (11) and 6d, also 2d on cover, CA ½d (12). 1d (15), 2d (12), 3d (2) and 4d (3), also 2d (2) on cover, 1889 1d (2), Official ½d, 1d and 2d and postal fiscal 1d (3), mainly good to fine	35	28
	img	1411	A 74 (Salt Gut): Pine 1d, 4d and 6d, CC ½d,, 1d, 2d, 3d. 4d. 6d and 1/-, CA ½d, 1d. 2d and 4d, 1889 1d and 2d (faded) and postal fiscal 1d, mainly and 6d, mainly selected strikes, some faults. (17).	50	
		1412	Pine 1d, 2d and 6d, CC ½d (2), 1d (3), 2d (4) and 3d and CA 1d (3), 2d (3) and 1880 1d (3), good to fine strikes. (22)	30	34
	img	1413	'A75' (Savanna-la-Mar): Great Britain used at Savanna-la-Mar 6d (stains) used on 22.7.58 creased cover to London. clearly cancelled 'A01' and with Savannah-la-Mar cds on face.	18	19
	img	1414	4d pair (trimmed at left) on 14.2.59 entire to Kingston cancelled by cds 'SAVANNAH-LA-MAR / JAMAICA'.	35	85
	img	1415	ditto, 4d (2, one with wing-margin) clearly cancelled on 1.4.59 cover to strikes. (12) Kingston.	34	60
		1416	ditto, 1d with part 'A01' and part cds and 6d on piece similarly cancelled pair and single cancelled 'A75' mainly fine. (5)	25	33
		1417	ditto, 1d strip of three and 4d with two legible 'A75' strikes, the last with 1d (2), 2d (4), two perfs. trimmed (4)	25	19
	img	1418	Pine 4d, very rare example of the first type 'A75' on Jamaican stamp, small red mark across face.	100	
		1419	Pine 1d, 4d (3. two on piece), 6d (2) and 1/- all with cds (when the obliterator was lost), some faults. (7)	55	
		1420	second type: Pine 1d (5, with doubtful bisect), 2d (2), 3d (5). 4d (3), 6d (6) and 1/- (4), also 1d (creased) and 2d on cover, CC ½d, 1d, 2d (4), 3d, 4d (2), 6d (2) and 1/- (2) with 2d on cover, CA ½d, 1d (3), 2d (4), 3d and 4d (3), also 2d on cover, 1889 1d (2) and 2d (3), postal fiscal 1d and 3d, and 1½d and 1d (2) postcards mainly fair to fine (65)	25	20
		1421	'A76' (Spanish Town): Great Britain used at Spanish Town, 1d strip of three, pair and single, 4d (3) and 6d, poor to fine strikes. (10)	35	36
	img	1422	ditto, 1d strip of four used on 27.2.60 cover to Bath, illegible to fine strikes, one on each stamp. (4).	50	105
	img	1423	ditto. 4d with wing-margin centrally clearly cancelled and used on 14.12.59 cover to Kingston which shows circular 'TOO LATE' mark.	30	85
		1424	Pine 1d (6), 2d (2), 3d (2), 4d (2), 6d (4) and 1/- (4), CC ½d, 1d (3), 2d, 3d. 4d, 6d (2) and 1/- (2) and second type CC ½d (4), 1d (2) 2d (7), 3d (2), 4d (3), 6d (2) and 1/- (2). CA ½d (4), 1d (14), 4d (4) and 4d (2), 1889 ½d (10), 2d (4) and 2½d (2), 1890 2½d on 4d, Official ½d (8, six thin), 1d (6) and 2d (2) and postal fiscal 1d (2) and 2d (3), mainly good to fine (114)	25	21
		1425	Pine 1d, on large part cover showing circular 'TOO LATE', CC 2d, CA 1d, 4d (2), 1889 1d and postal fiscal 1d used on separate covers, poor to fine strikes, some faults. (5)	20	23
		1426	A 77 (Stewart Town): Pine 1d,, 2d, 3d, 4d, 6d and 1/-, CC ½d, 1d, 2d, 3d, 4d. 6d and 1/- and CA ½d, 1d, 2d (both) and 4d and 1889 1d and 2d (faded), selected strikes(20)	24	
		1427	Pine 1d (2), 2d. 4d (strip of three) and 6d, CC ½d, 1d (4), 2d (3), 3d pair. 4d, 6d (2) and 1/- (2), also a faked 1d bisect on cover. CA ½d, 1d (6). 2d (2), 4d, 1889 1d (3) and 2d, and postal fiscal 1d, 3d and 1/-, poor to fine	30	25

Robson Lowe Sale of Edwin Erickson Jamaica, 6 Sept 1972

img	Lot	Jamaica	Est	Real GBP
	1428	'A78' (Vere): Great Britain used at Vere, 4d and 6d (corner defect), clearly or lightly cancelled, the 4d on large part cover. (2)	30	42
	1429	Pine 1d (5), 2d (3), 3d (4), 4d (2), 6d (4) and 1/- (4, one on front). CC ½d (3), 1d (3), 2d (3), 3d, 4d (2), 6d (2) and 1/- (2), CA ½d (3), 1d (9), 2d (4), 3d and 4d (3), 1889 1d (6), 2d (3) and 2½d, 1890 2½d on 4d, Official ½d (both), 1d and 2d, postal fiscal 1d and ½d on 1d postcard, mainly good to fine. This office's name changed to Alley in 1875 (77).	45	
	1430	A 79 (Richmond): Pine 3d fine and 'A9' (figure '7' omitted) on CC 2d, 4d and 6d, mainly fine (4)	75	95
	1431	Second type: Pine 1d, 3d, 6d and 1/-, also 2d and 4d on cover to America, three clearly struck. one lightly struck and the cover untidily cancelled (6)	55	62.50
	1432	ditto. CC ½d. 1d, 2d, 3d. 4d and 6d, CA ½d, 1d, 2d (both) and 4d, 1889 1d and 2d and 1890 2½d on 4d, fair to clear strikes	35	26
	1433	ditto, CC -1d, 1d pair on dated piece, 2d (2) and 6d, CA ½d, 1889 2½d, 1890 2½d on 4d pair, Official ½d and 2d and postal fiscal 1d, poor to fine strikes. (12)	25	23
img	1434	third type (Balacava): CC ½d (2), 1d (2), 2d (2). 3d. 4d and 6d each in a pair and sharing 'A79' obliteration. (18).	25	36
	1435	ditto, CC ½d (2), 1d (2), 2d (2), 3d, 4d (2), 6d (2) and 1/-, and CA ½d (2), 1d (2), 2d (4). 3d and 4d (2). 1889 1d (2) and 2d (2, faded). 1890 2½d on 4d and Officials ½d and 1d, mainly fine strikes. (30)	30	28
img	1436	'A80' original: Pine 1/- clearly cancelled 'A80'. (1).	50	
	1437	Pine 6d and CC 1d and 1/-, good to clear strikes, the last defective. (3)	75	
img	1438	CC ½d and 1d blue in pairs, lightly or clearly cancelled (4).	50	
	1439	CC ½d, 1d, 2d. 3d, 4d, 6d and 1/- and CA 1d and 2d, mainly clear strikes, 'A80' was used at Mount Charles from 1876 to 1884 and at Hagly Gap from 1.6.1884 to early 1885. (9)	75	
	1440	A 81 (Pedro): C,C ½d, 1d, 2d, (2), 3d. 4d (2), 6d and 1/-, fair to clear strikes. (9)	70	
	1441	second type: CA ½d (8), 1d (2), 2d (2) and 4d (4), 1889 1d (3), 2d (2) and 2½d, Officials ½d and 1d in pairs, poor to fine. (26)	30	32
	1442	CA 4d on cover to Rhode Island, fairly clearly cancelled (1)	20	42
	1443	'A82' (Middle Quarters): CA ½d, 1d, 2d, 3d, 4d and 6d, CA ½d, 1d (both), 2d. 3d and 4d, 1889 1d (2), 2d (faded), 2½d and 1890 2½d . on 4d. fair to fine strikes. (17)	30	28
	1444	CC ½d, 1d (3), 2d (5). 3d, 4d and 6d, CA ½d, 1d (7), 2d (5) and 4d, 1889 1d (6, one on cover). Official ½d and postal fiscal 1d, mainly good to fine strikes. (34)	40	
	1445	A 83 (Trinityville): CC 1d, 2d (2), 4d and 6d, CA ½d (6), 1d (5), 2d, (3) and 4d (2), 1889 1d (2), 2d and 2½d, official 1d and postal fiscal 1d, mainly fair to fine. (27)	30	36
	1446	CC 2d on cover used to Kingston, fairly clearly cancelled (1)	20	40
	1447	E 06 (Newmarket): Pine 1d (4, with strip of three), 2d, 3d, 6d and 1/-, mainly clearly struck. (8)	60	47
	1448	CC ½d, 1d. 2d, 4d. 6d and 1/-, CA ½d. 1d (both), 2d (both) and 4d, 1889 1d, 2d (faded) and 2½d and 1890 2½d on 4d, mainly selected strikes. (16)	35	
	1449	CC ½d (2), 1d, 2d (5) and 1/-, CA ½d, 1d (7. with a strip of five) and 2d (2), 1889 1d and 2d and Official ½d and 2d, fair to fine	3	
	1450	E 30 (Lacovia): Pine 1d, 6d and 1/-, clearly struck	45	
	1451	CC ½d (5), 1d (9), 2d (9), 3d (2). 6d (2) and 1/- (2), CA 1d (2), 1d (7), 2d (4). 4d (2), 1889 1d (2), postal fiscal 1d (2) and ½d on 1d blue postcard (49)	30	27
	1452	'E 58' (Little River): Pine 1d and 6d, good legible strikes, some small faults	75	31
	1453	CC -½d (3). 1d (6), 2d (2), 3d (3), 4d (2), 6d and 1/- (2). CA ½d (4), 1d (3), 2d (3). 4d, (2). 1889 1d (2), 2d (2) and 2½d, 1890 2½d on 4d (2) and 1d postcard mainly good to fine. (39)	25	

Robson Lowe Sale of Edwin Erickson Jamaica, 6 Sept 1972

img	Lot	Jamaica	Est	Real GBP
	1454	CC 1d and 6d struck in blue, legible strikes, some faults	25	
	1455	'F 80' (Little London): Pine 1d with good to clear central strike. some irregular perfs	30	
	1456	CC ½d, 1d, 2d, 3d, 4d, 6d and 1/-, CA ½d. 1d (3), 2d and 4d, 1889 1d, Photo for the 2d (faded) and 2½d, mainly selected strikes. (16)	60	
	1457	CC ½d, 1d (3), 2d. 3d. 4d (2) and 6d. CA 1d, 2d. 1889 1d and 1890 2½d on 4d, fair to fine strikes. (13)	30	
	1458	'F 81', (Clarks Town): Pine 1d with good central strike	30	
img	1459	CC ½d, 1d, 2d. 3d, 4d, 6d and 1/-, CA ½d, 1d (both) and 2d, 1889 1d (2) and 2d and 1890 2½d on 4d (2. one double surcharge). mainly selected strikes. (16).	25	23
	1460	CC ½d (2), 1d (5), 2d (5). 4d, 6d and 1/- CA ½d (6), 1d, 2d (4) and 4d 1889 1d (on cover) and 2d (4), Officials ½d and 1d and postal fiscal 1d, mainly clear strikes	55	
	1461	'F 95' (Watson Hill): Pine 1d with legible strike	35	
img	1462	CC ½d. 1d, 2d. 4d and 6d, CA ½d. 1d (both). 2d. 3d and 4d. 1889 1d (2) and 2½d, 1890 2½d on 4d. 1900 1d and 1901 1d, selected strikes. (17).	25	
	1463	CC ½d (2), 1d (2). 2d (2), 3d, 4d, 6d and 1/- CA 1d (both). 2d (6). 3d and 4d (also ½d and 1889 1d (2) on cover), 1889 1d (2), 2½d (2) and 2½ 1890 2½d on 4d (K variety), 1900 and 1901 1d, Officials ½d and 1d and postal fiscals (2). Mainly good to fine (35)	15	20
	1464	CC ½d pair, 1d, strip of three and three pairs, 2d pair, 3d, strip of three and 6d block of ten, some faults. mainly clear strikes. (26)	20	16
	1465	'F 96' (Shooters Hill) : Pine 1d, good strike without the 'F'. small faults	50	
	1466	CC ½d, 1d (3), 2d (3). 3d, 4d (2), 6d (2) and 1/- and CA ½d, 1d (4). 2d (7). 4d (2). 1889 1d (2) and 2½d (2), Official 1d and postal fiscal 1d, fair to fine strikes	45	
	1467	CC ½d pair, CA ½d, 1d (both) and 2d and 1889 1d, all in pairs and Official 1d block of nine . Clearly or lightly cancelled (19)	35	
	1468	'F 97' (Copse): Pine 1d clearly cancelled, a few perfs, ragged	50	
	1469	CC ½d pair, 1d. 2d, 3d, 4d. 6d and 1/-, CA ½d, 1d (both), 2d and 1889 1d and 2½d. clearly or lightly cancelled (15)	60	44
	1470	C C 1d (3), 2d (5), 3d, 4d. 6d (2) and 1/-, CA 2d (both) and 4d and 1889 1d (2), fair to fine strikes. (18)	65	
img	1471	F 98 (Chester Castle): CC ½d, 1d, 2d, 4d and 1/-, CA ½d. 1d (both). 2d and 4d, 1889 1d, 2d and 2½d and 1890 2½d on 4d, selected strikes. (14).	30	24
	1472	CC 2d on cover, 1d blue post card and ½d on 1d blue post card illegibly to clearly cancelled (3)	30	26
	1473	CC ½d (7), 1d, 2d (4). 4d and CA ½d (5), 1d, 2d (5) and 4d, 1889 1d (4), 2d and 2½d (3) and Officials ½d and 2d. mainly clear to fine. (36)	50	
	1474	'G 13' (Half Way Tree): CC 1d, 1d (pair). 2d, 4d and 6d. CA ½d, 1d (both). 2d (both), 3d and 4d, 1889 1d and 2d, 1890 2½d on 4d, Officials ½d, 1d and 2d and 2d and postal fiscal 1d. fair to fine strikes. (20)	60	
	1475	CC ½d (2), 1d (3), 2d (3), 4d and 6d, CA ½d. 1d (both), 2d (both) and 4d. 1889 1d (4) and 2d (faded) and Official ½d (22)	40	
	1476	G 14 (Hampden): CC ½d, 1d. 2d. 3d. 4d, 6d and 1/-, CA ½d, 1d (both). 2d and 4d, 1889 1d (2), 2d and 2½d. 1890 2½d on 4d. 1900 1d and 1901 1d mainly selected strikes. (19)	25	
	1477	CC ½d (3), 1d (4), 2d (5), 4d and 6d, CA ½d (3), 1d (3) and 2d (3), 1889 1d (2) and 2d, 1900 and 1901 1d and Officials ½d, 1d and 2d. good to fine. 4d (31)	40	
	1478	1889 1d used on cover and 1d blue postcard fairly clearly cancelled	20	22
img	1479	G 15 (Blue Mountain Valley): CA 1d, 2d. 3d, 4d, 6d and 1/-, CA ½d. 1d (3), 2d and 4d and 1889 1d and 2d, mainly selected strikes. (14).	30	24

Robson Lowe Sale of Edwin Erickson Jamaica, 6 Sept 1972

	img	Lot	Jamaica	Est	Real GBP
		1480	CC ½d. 1d (5), 2d (3). 3d, 4d and 1/-, CA ½d (7). 1d (2), 2d (6) and 4d 1889 1d (4) and 2d, 1d blue post card cut-out and Official 1d. mainly selected strikes	60	
		1481	CC 6d fine used on 10.12.77 cover to England partly legible strike. (1)	25	28
	img	1482	'G 16' (Priestman's River): CC 1d, 2d, 3d 4d and 6d, CA ½d. 1d (both), 2d. 4d and 6d, 1890 2½d on 4d and 1889 1d, ,tnd 2d. selected strikes. (14).	25	
		1483	CC ½d. 1d (5), 2d (4) and 4d, CA ½d (5), 1d (4). 2d (2) and 4d, 1889 1d (5) and 2d (4) and postal fiscal 1d mainly fine. (33)	45	
		1484	1899 1d clearly cancelled on 11.3.92 cover to Kingston	20	36
	img	1485	193 (Cold Spring) CC ½d, 1d, 2d, 3d, 4d, 6d, 1/- and 2/- CA 1d and 6d. 1889 1d., 2d and 21d, 1890 2½d on 4d. Official ½d and postal fiscal 1d, mainly selected strikes. (16).	25	18
		1486	CC ½d (3),1d (2), 2d (3), 3d, 4d, 6d (2) and 1/- CA ½d (4), 1d (6), 2d (2). and 3d, 4d (3) and 6d, 1889 ½d (6), 2d (2) and ½d Official 2d postal fiscals 1d (2), 1½d and 3d, fair to fine strikes. (44)	50	
		1487	CC 1/-,- used on 1875 cover to Dublin. fairly legibly cancelled	25	42
		1488	Postal Fiscal 1d and 3d (block of four) on piece, some rubbing. 3d and 1/- on dated piece., also 1889 1d on piece. all fairly well cancelled except the last.	20	
	img	1489	196 (Ewarton): CC 1d, 4d and 6d. CA 1d (both), 2d and 4d, 1889 1d and 2d and postal fiscal 1d, mainly selected strikes, some faults. (10).	50	44
		1490	CC 1d (4) and 2d (2), C,A ½d (2). 1d (3), 2d (6) and 4d and 1889 1d, lightly or clearly cancelled, some superb	70	
		1491	CA 2d clearly cancelled on slightly torn cover to Kingston	30	36
		1492	199 (Guys Hill) CC ½d. 1d (2). 2d, 4d and 6d, CA ½d, 1d (both), 2d, 3d and 4d, 1889 1d 2d and 2½d and 1890 2½d on 4d, mainly selected strikes.	85	67.50
		1493	CC ½d. 1d, 2d and 3d, CA ½d (2) and 2d, 1889 1d (2) and 2½d, Officials ½d and 2d and postal fiscal 1d, clear to fine strikes	65	
		1494	201 (Milk River): CC ½d, 1d (3), 2d. 4d, 6d and 1/-, CA ½d (3), 1d (4) and 2d (2), 1889 1d (5) and 2d (faded), 1890 2½d on 4d. 1901 1d. 1904 1d and official ½d and 2d. mainly selected strikes. (28)	65	
		1495	CC 1d (3), 2d (4), 4d and 6d. CA ½d. 1d (3), 2d (4) and 4d (2), 1889 1d (5), 2d and 2½d. Official ½d (3) and 1d and postal fiscal 1d, fair to fine. (31)	60	
		1496	CC 4d and 1/- used together on 1875 cover to Marseille and CA ½d and 1889 1d (2) on 1892 cover to Colchester, clear strikes. (,5)	40	67.50
		1497	598 (Adelphi): CC 1d, 2d and 4d, CA ½d, 1d and 2d (both). 1889 1d (2) and Official ½d, poor to fine strikes. (10)	75	
		1498	CC, ½d, 4d and 1/-, CA ½d (3). 1d (both) and 4d and 1889 2½d. poor to fine cancellations. (10)	75	
		1499	'615' (Bull Bay): CA ½d pair, 1d, 2d and 4d and 1889 1d., selected strikes	50	
		1500	CA ½d and 2d 1889 1d. 2d (faded) and 2½d, 1901 1d and Official ½d, fair to fine strikes. (7)	50	
	img	1501	CA ½d and 1d. 1889 2½d, 1890 2½d on 4d, 1900 1d and Official 2d, fair to fine strikes. (6).	40	
		1502	'617' (Hayes): CC ½d. 1d. 2d. 3d, 4d, 6d and 1/-. mainly selected strikes. (7)	40	
		1503	CA ½d, 1d (both), 2d (both), 3d and 4d. 1889 1d and 2½d. 1890 2½d on 4d, Official ½d and 1d and postal fiscal 1d pair, mainly selected strikes	30	24
		1504	CC ½d (4), 1d (4), 2d (6), 3d. 4d and 1/-, CA ½d (12), 1d (12) and 2d (3). mostly fair to fine. (58)	30	
	img	1505	'622' (Kings): CC ½d pair, 1d pair. 2d and 4d, CA ½d pair, 1d (both) and 2d ., 1889 1d and 2d, 1890 2½d on 4d and Official 2 (thin) mostly clear strikes. (15).	32	

Robson Lowe Sale of Edwin Erickson Jamaica, 6 Sept 1972

	img	Lot	Jamaica	Est	Real GBP
		1506	CC ½d (3), 1d (9), 2d and 6d. CA ½d (3), 1d (3). 2d and 4d 1889 1d (11) and 2d and postal fiscal 1d, mostly fair to fine strikes. (35)	20	
		1507	'631', (Maidstone): CC, 1d (strip of three), 3d, 4d or lightly cancelled some faults. (7)	50	44
		1508	CC -½d (2), 1d (2) and 2d (2), CA ½d, 2d (2) and 4d and 1889 1d, fair to fine strikes. (111)	65	
		1509	640 (May Pen): CC ½d, 1d, 2d pair, 3d, 4d and 6d, CA ½d, 1d (5), 2d (both), 3d and 4d, 1889 1d (block of four), 2d and 2½d, Officials -1d (4, three thin type, one with double overprint), 1d and 2d and postal fiscal 1d, mainly selected (30)	40	
		1510	CC ½d (2), 1d (10), 2d (3), 4d and 6d, CA ½d (4), 1d (12), 2d (6) and 4d (2), 1889 1d (23) and 2d, 1890 2½d on 4d, Officials ½d (4, two thins) and 1d (2) and postal fiscals 1d and 3d, mainly good legible strikes. (74)	20	
		1511	'642' (Petersfield): CC ½d (2) 1d (2) 2d (4) 4d (2) 6d and 1/-; CA ½d (2) 1d (2), 2d (2) and 4d; 1889 1d and 2½d, 1890 2½d on 4d (2). official ½d 1d and postal fiscal 1d, fair to fine. (26)	40	31
	img	1512	CC 1d, very fine strip of four with two strikes. (4).	50	
	img	1513	CC 4d, CA ½d, 4d (on small piece) and 1889 1d and 2d, clearly cancelled (5).	30	
		1514	CA 1d and 2d each centrally cancelled (4)	30	
		1515	1d postcard used to Bog Walk. clearly cancelled but climatically stained (1)	20	19
		1516	'647', (Southfield): CC 1d pair, 1d, 2d, 4d and 6d, clearly cancelled (6)	30	
		1517	Pine 1d. CA ½d, 1d (both), 2d (both) and 3d, 1889 1d, 2d and 2½d, 1890 2½d on 4d. Official ½d and postal fiscal 1d (13)	50	
		1518	CC ½d, 1d (3), 2d (2). 4d and 1/-, CA ½d (5), 1d. 2d (4), 3d and 4d. 1889 1d (5), 2d and 2½d and Official ½d (2, thick). (29)	30	
		1519	A' (Milk River): CC ½d, 1d, 2d, 4d and 6d, clear strikes. (5)	115	
	img	1520	CC 1d, 2d and 6d, good legible strikes.	50	55
	img	1521	'B' (Duncans): CC ½d, 1d, 2d, 3d, 4d, 6d and 1/-, clear strikes. (7).	30	
		1522	CA ½d, 1d (both), 2d (3) and 4d, 1889 1d to 2½d, 1890 2½d on 4d and postal fiscal 1d. mainly selected strikes. (12)	20	
		1523	CC ½d (2), 1d (2), 2d (4), 4d, 6d (2) and 1/-, CA ½d (5), 1d (4), 2d (4), 3d (2) and 4d (2), 1889 1d (7), 2d (2) and 2½d, 1890 2½d on 4d, postal fiscal 1d (2). mainly fair to fine. (43)	60	
		1524	½d on 3d postcard used to London, clearly cancelled	20	30
	img	1525	'C' (Laughlands): CC 6d and CA ½d, 1d (2) and 4d (2), superb strikes. (6).	60	52.50
		1526	CC 2d (2) and 4d and CA 1d pair and 2d. fine strikes. (6)	40	
		1527	CC ½d (2), 1d (2), 2d (2), 6d and 1/- and CA 2d (2), fair to good strikes (5)		
	img	1528	'E': CC ½d, 1d pair, 2d, 4d, selected strikes (5)	35	
		1529	'E': CC ½d, 1d, 2d (2), 4d (2) and 6d, mainly good to fine (7)	35	

Images



1170



1171

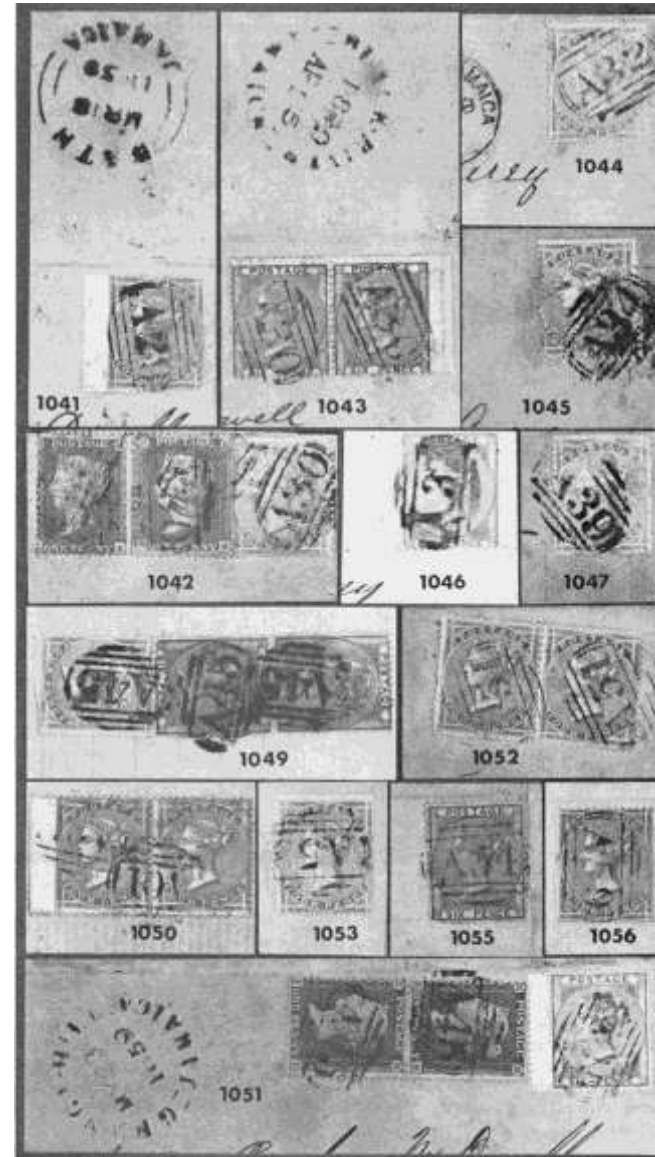


1104

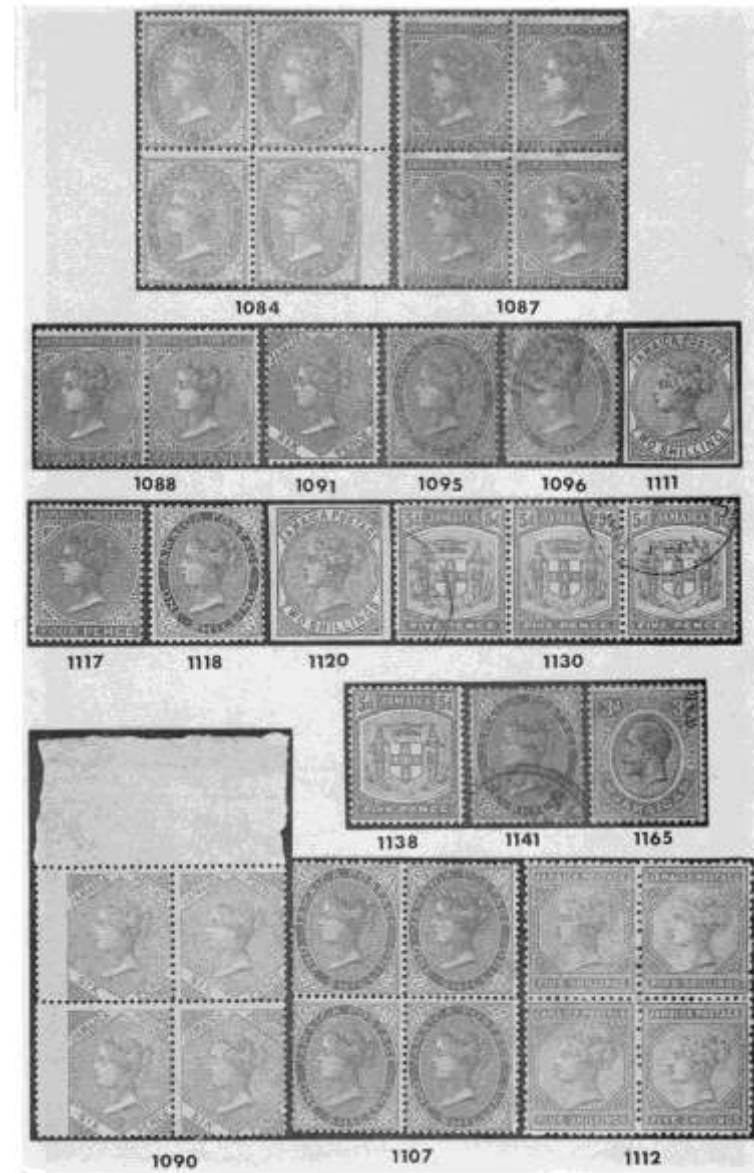


1342

Robson Lowe Sale of Edwin Erickson Jamaica, 6 Sept 1972

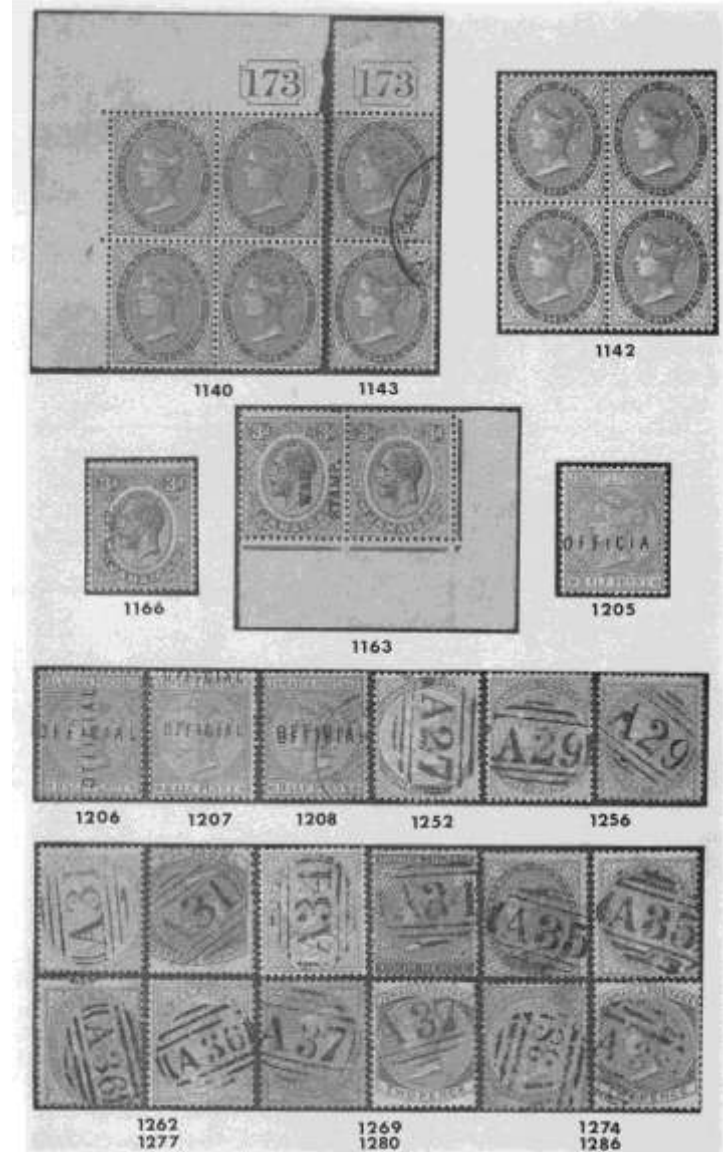
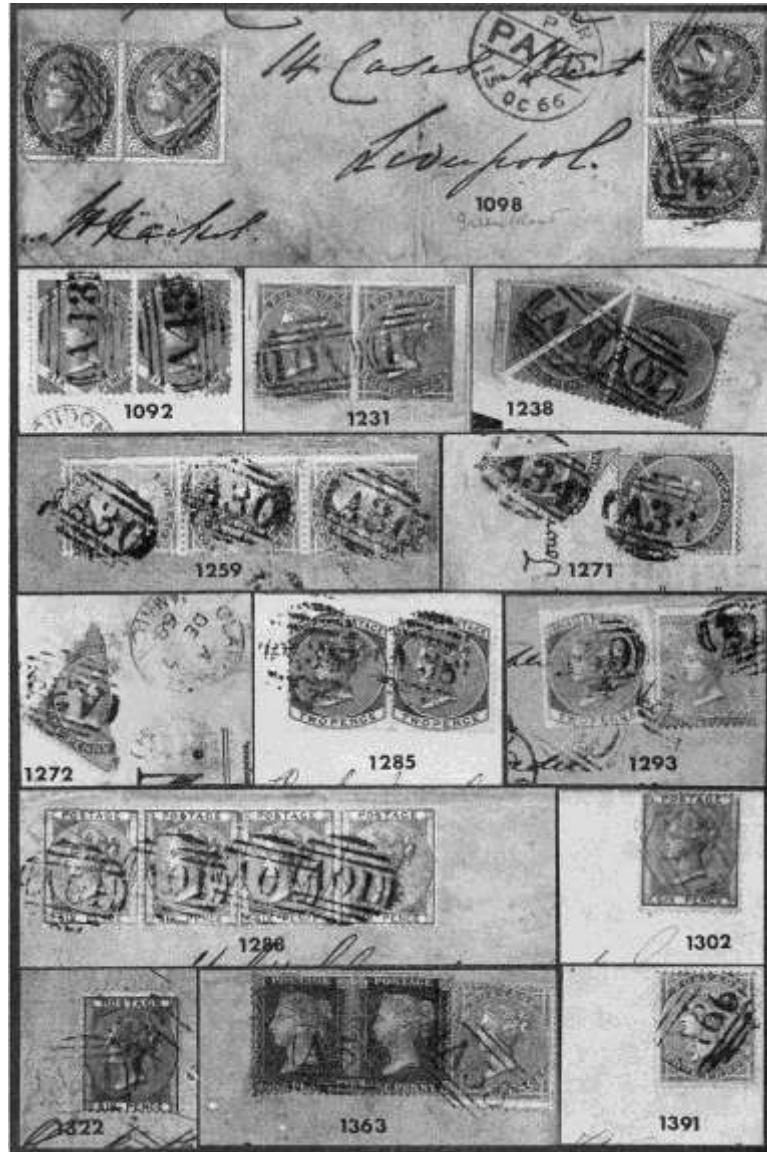


Robson Lowe Sale of Edwin Erickson Jamaica, 6 Sept 1972

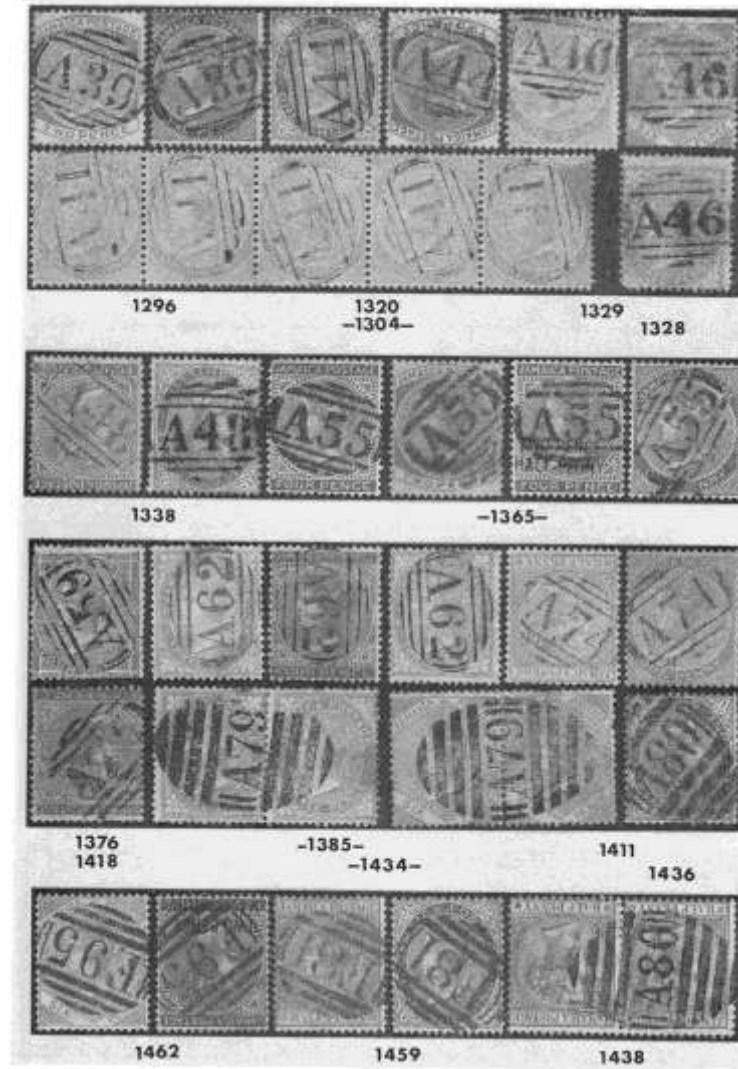


Robson Lowe Sale of Edwin Erickson Jamaica, 6 Sept 1972

1238 is 1245



Robson Lowe Sale of Edwin Erickson Jamaica, 6 Sept 1972



Robson Lowe Sale of Edwin Erickson Jamaica, 6 Sept 1972

